

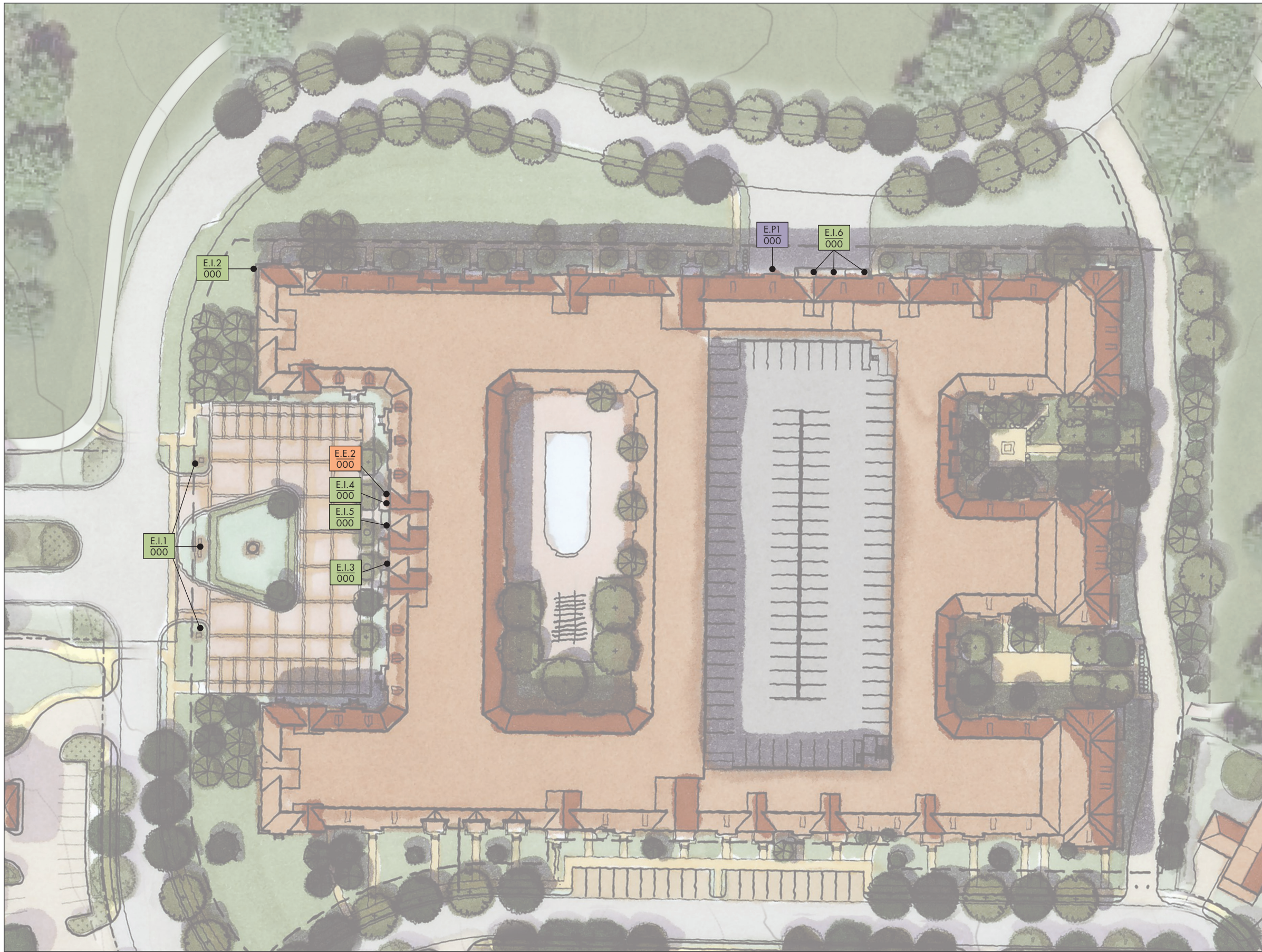
MEADOWBROOK MULTIFAMILY BUILDING

ENVIRONMENTAL GRAPHIC DESIGN



SCHEMATIC DESIGN PRESENTATION

PRAIRIE VILLAGE, KANSAS • MARCH 31, 2016 • 01.15084.01 • © 2016 LRK



SIGN TYPES:

Identification

- E.I.1 Building ID - Primary Monument Sign
- E.I.2 Building ID - Primary Blade Sign
- E.I.3 Building ID - Address
- E.I.4 Leasing ID - Canopy
- E.I.5 Leasing ID - Blade Sign
- E.I.6 Loading/Service Area - Wall Plaque

Parking

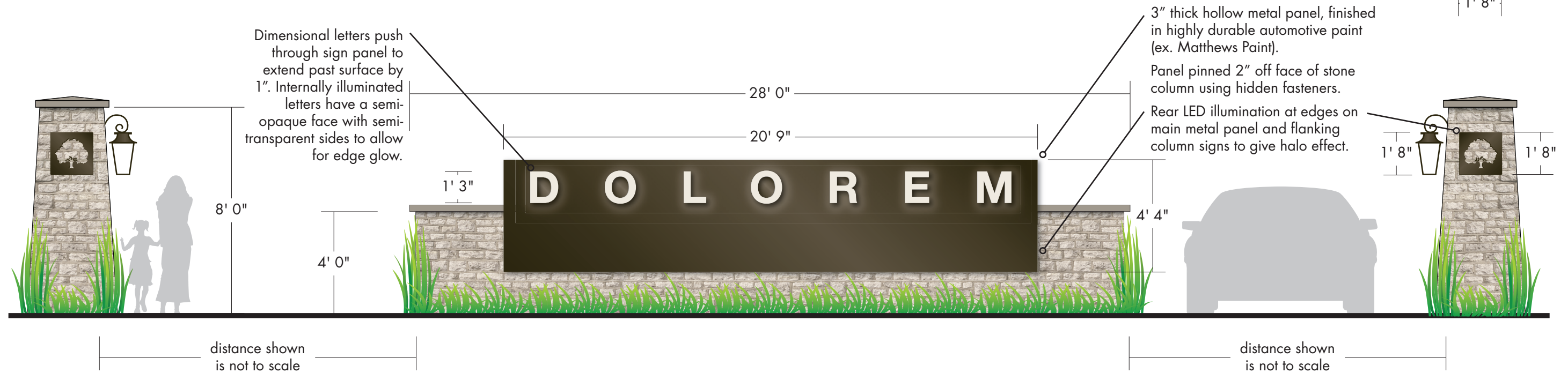
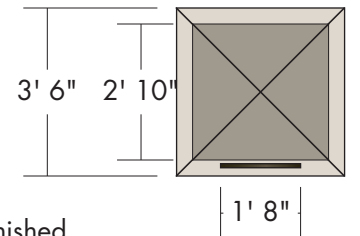
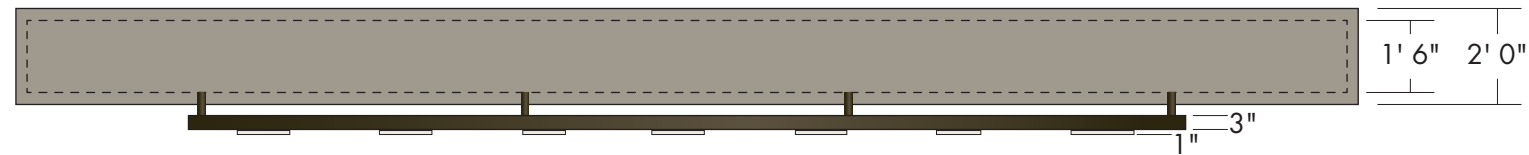
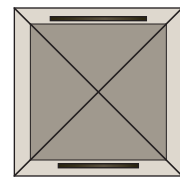
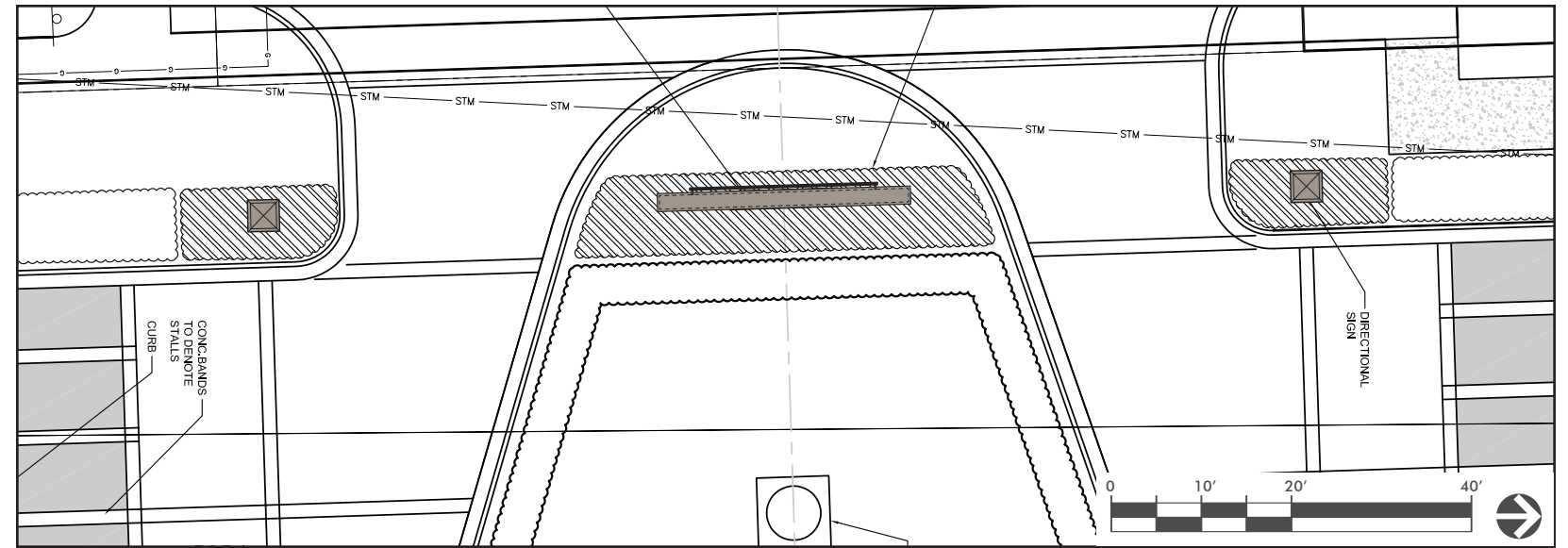
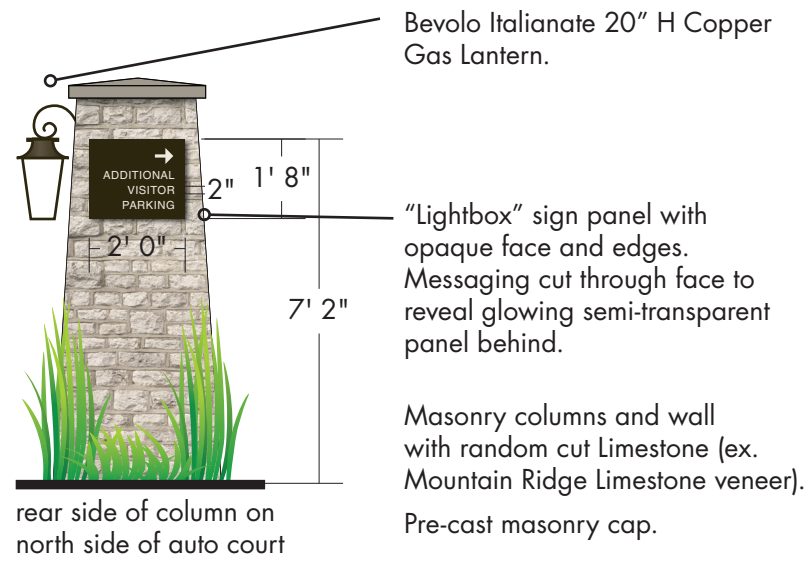
- E.P.1 Parking ID - Overhead

Enhancement

- E.E.2 Window Graphics

NOTE: Site plan is illustrative only.

NOTE: All logos, fonts, icons and colors are placeholder.
Details to be designed during future phases.



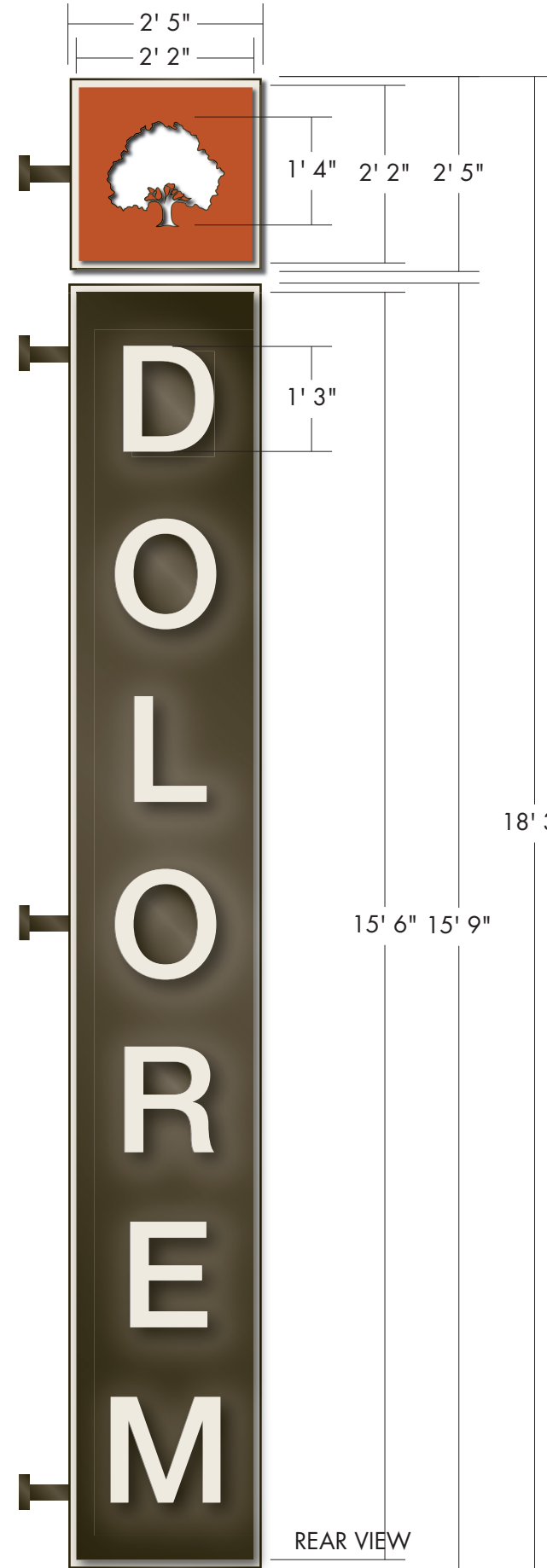
NOTE: All logos, fonts, icons and colors are placeholder. Details to be designed during future phases.

Icon completely punched through panel.

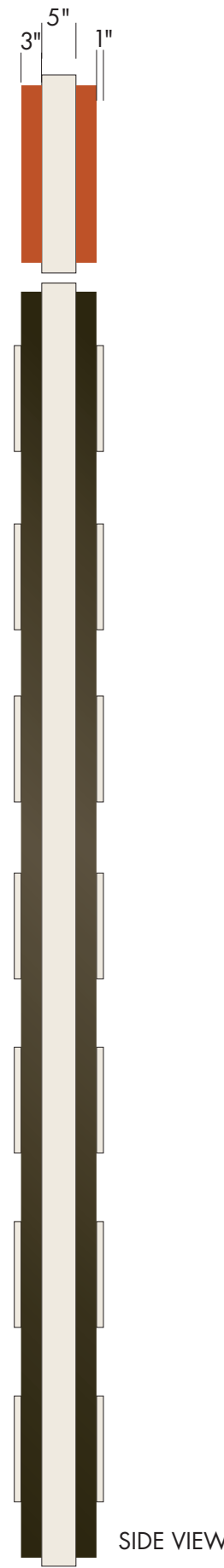
Dimensional letters push through sign panel to extend past surface by 1". Internally illuminated letters have a semi-opaque face with semi-transparent sides to allow for edge glow.

Stacked metal panels and attachments finished in highly durable automotive paint (ex. Matthews Paint).

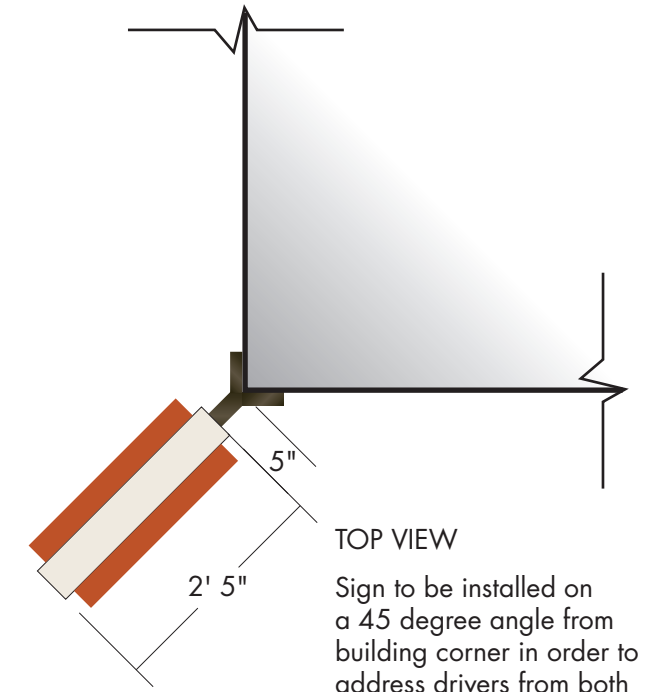
FRONT VIEW



REAR VIEW



SIDE VIEW



TOP VIEW
Sign to be installed on a 45 degree angle from building corner in order to address drivers from both the North and the West.

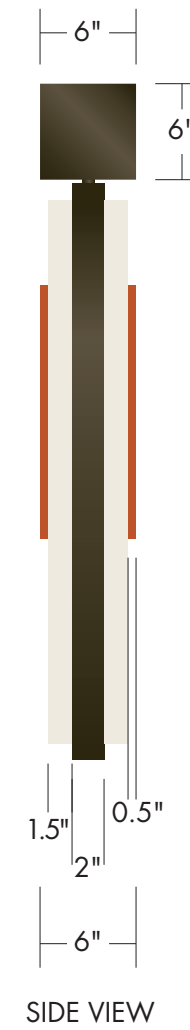
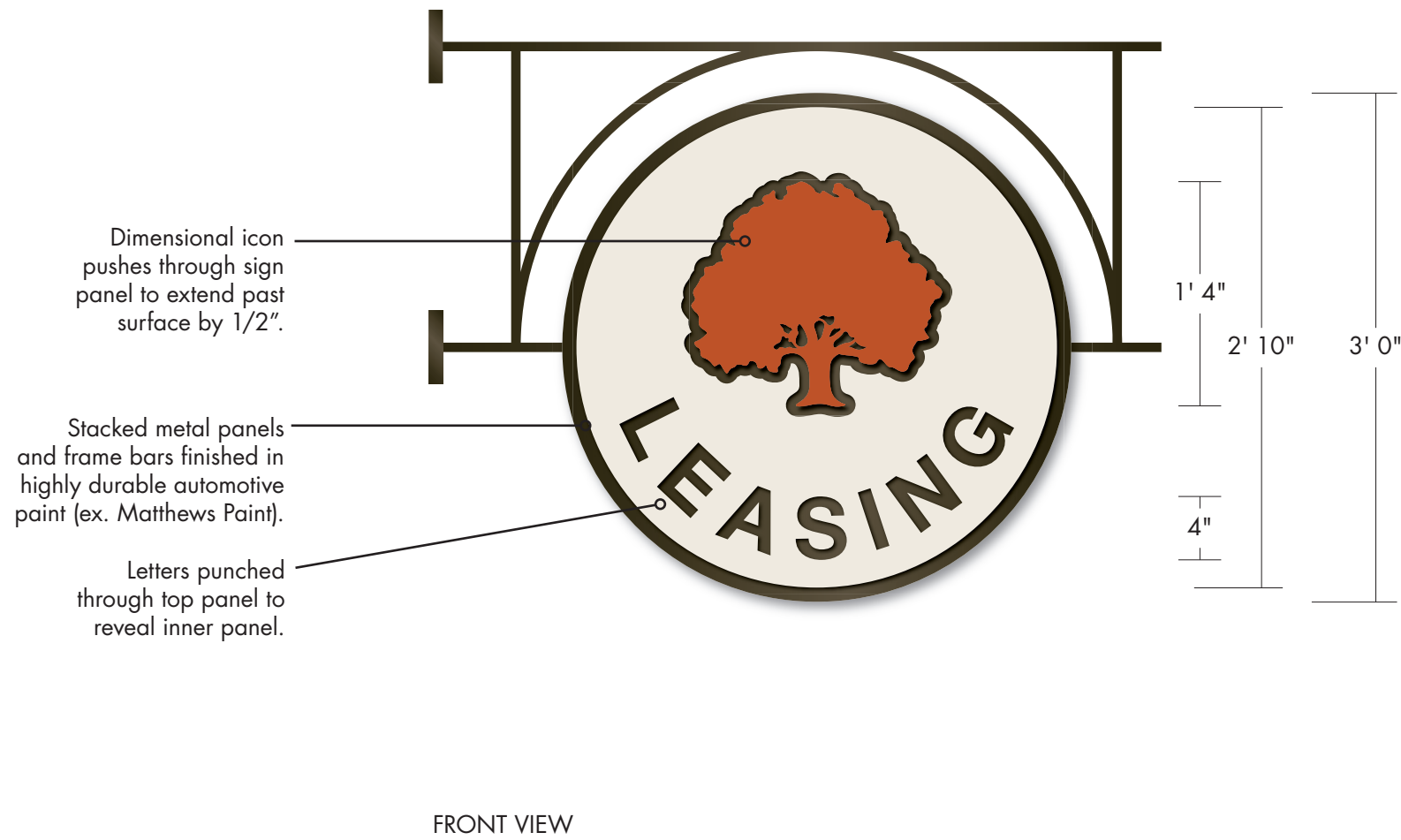
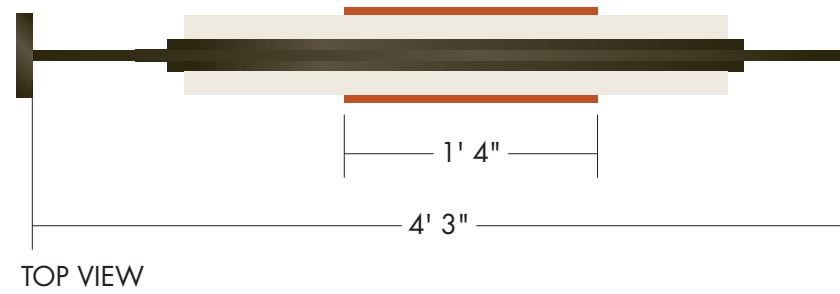


ELEVATION NOT TO SCALE

NOTE: All logos, fonts, icons and colors are placeholder.
Details to be designed during future phases.



NOTE: All logos, fonts, icons and colors are placeholder.
 Details to be designed during future phases.



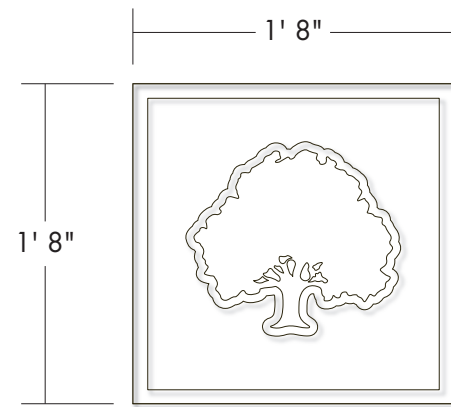
NOTE: All logos, fonts, icons and colors are placeholder.
Details to be designed during future phases.



E.I.4 - LEASING CANOPY LETTERS

1/2" thick dimensional numbers finished in highly durable automotive paint (ex. Matthews Paint).

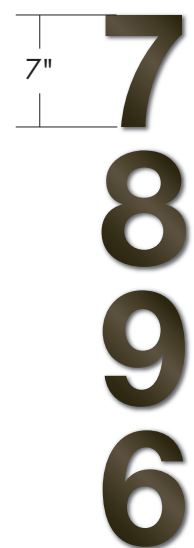
Letters are pinned to carrier that visually "goes away" with matching canopy color.



E.E.2 - WINDOW GRAPHICS



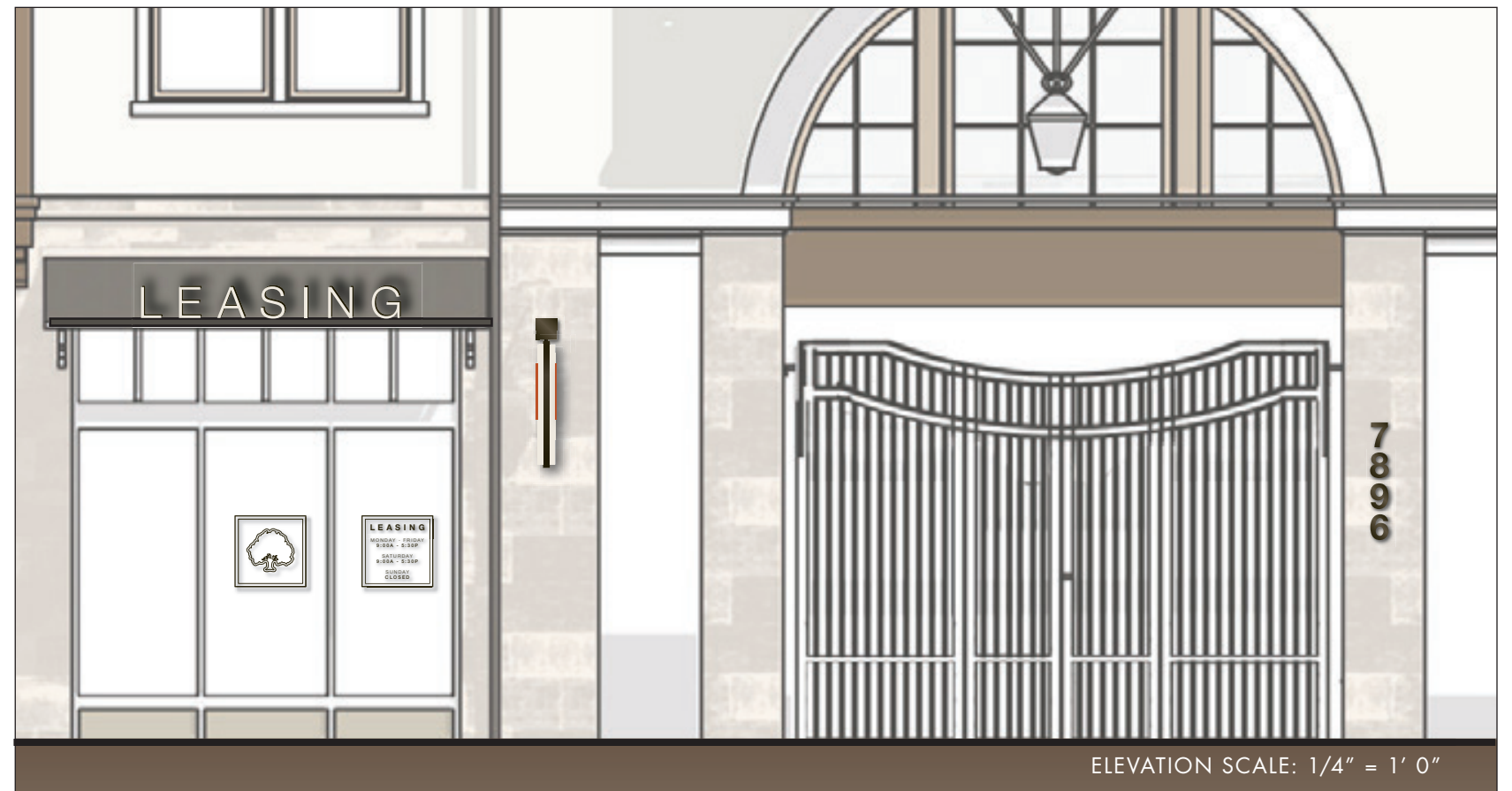
Stencil cut vinyl graphics applied to interior surface of glass doors. Color to be determined based on visibility/contrast.



E.I.3 - ADDRESS

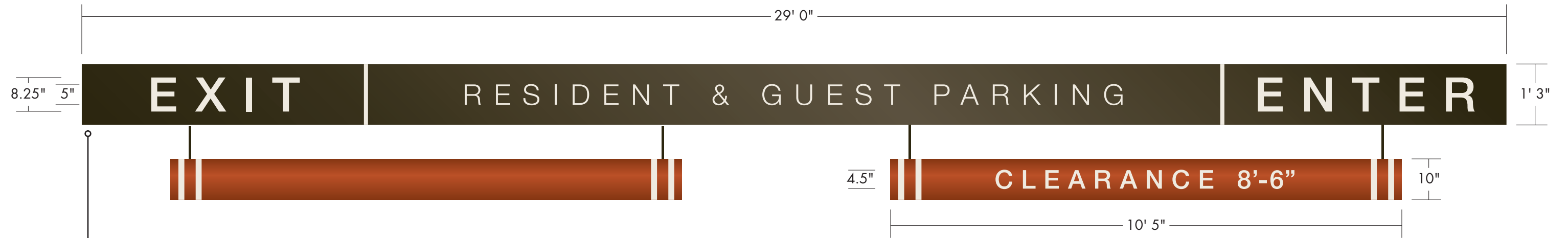
1/2" thick dimensional numbers finished in highly durable automotive paint (ex. Matthews Paint).

Letters are pinned 1/4" off surface of stone to allow for variation in stone surface.



ELEVATION SCALE: 1/4" = 1' 0"

NOTE: All logos, fonts, icons and colors are placeholder.
Details to be designed during future phases.



Metal bars finished in highly durable automotive paint (ex. Matthews Paint).

Letters and stripes are stencil painted in a high contrast color onto metal bars.

Hang heights and clearance to be field verified.



NOTE: All logos, fonts, icons and colors are placeholder.
Details to be designed during future phases.

1/2" thick photo-polymer cast plaques with recessed color band and tactile letter forms tipped in matte finish paint.

