

# VOICE

The Star of Kansas

## NotifyJoCo

### What I Need to Know. When I Need to Know it.

Those who live, work or play in Johnson County (and Prairie Village!) can sign up to receive important information about locations they care about through NotifyJoCo. NotifyJoCo is a free public notification system which will communicate emergency information to you through phone, text and email messages.

and only be used to contact you about emergencies and topics in which you have expressed interest.

Using contact information provided by users, NotifyJoCo allows local governments and utilities to notify the public about issues affecting locations they identify. Emergency notifications will be sent in cases needing an immediate response, such as tornado warnings, evacuation notices and public health alerts.

Prairie Village uses the system to send out emergency notifications and non-emergency notifications. The City no longer uses Code Red for emergency notifications. If you were previously registered for CodeRed, you will need to sign up with NotifyJoCo to continue to receive emergency notifications. In addition, residents can receive non-emergency notifications including: Trash Delays, Street Work & Closures, Special Event Permits, Neighborhood Events, and Planning & Zoning Public Hearings. You can also sign up for weather alerts. If you previously registered, you will need to log-in to update your preferences.

To use the system, residents register at [www.NotifyJoCo.org](http://www.NotifyJoCo.org) with their personal contact preferences. Users can then identify multiple locations they care about (home, work, or their child's school, for example), and choose which messages they would like to receive. Residents who do not have internet access may call 913.826.5555 to register their information. All information provided will be kept confidential

The system is an unprecedented effort between Johnson County, WaterOne, and the cities of Merriam, Mission, Leawood, Lenexa, Mission Hills, Olathe, Overland Park, Prairie Village, Roeland Park and Shawnee.

### FEATURES:

3 Shop with a Cop!

5 Jazz Festival Schedule



12 State of the Arts 2014



# MAYOR'S MESSAGE



Greetings,

I am pleased to report the City Council adopted a balanced budget for 2015 with no increase to your property tax rate. The adopted budget maintains a total mill rate of 19.490 for 2015. Sound financial management and prudent spending practices helped the City maintain a strong outlook for 2015. Despite modest revenue projections and essentially flat expenditure costs, the 2015 Adopted Budget maintains the same level of service as the 2014 Budget.

The Solid Waste Assessment you will see on your tax bill will remain the same at \$174.00 per household. The City contracts with Deffenbaugh Disposal, Inc. for solid waste collection, recycling, composting and large item pick up.

The Stormwater Utility Special Assessment will remain at \$0.040/ square foot. This assessment creates a dedicated revenue stream to finance stormwater projects and maintenance based on a fee structure linking the amount of stormwater runoff created by property owners to the amount of money these property owners pay toward upkeep of the system.

The 2015 budget can be found at [www.pvkansas.com](http://www.pvkansas.com). Don't forget to check out the 2015 Budget Summary in the next issue of the Village Voice. You can also check out our 2013 Popular Annual Financial Report at [www.pvkansas.com/pafr](http://www.pvkansas.com/pafr). Questions or comments may be sent to Lisa Santa Maria, Finance Director, [lsantamaria@pvkansas.com](mailto:lsantamaria@pvkansas.com) or 913-385-4661.

Sincerely,

Ron Shaffer, Mayor

# ELECTED OFFICIALS

## MAYOR

Ron Shaffer . . . . . 913-831-0907  
[mayor@pvkansas.com](mailto:mayor@pvkansas.com)

## WARD I

Ashley Weaver . . . . . 913-403-9154  
[aweaver@pvkansas.com](mailto:aweaver@pvkansas.com)

Jori Nelson . . . . . 913-522-7497  
[jnelson@pvkansas.com](mailto:jnelson@pvkansas.com)

## WARD II

Steve Noll . . . . . 913-262-1560  
[snoll@pvkansas.com](mailto:snoll@pvkansas.com)

Ruth Hopkins . . . . . 913-384-0165  
[rhopkins@pvkansas.com](mailto:rhopkins@pvkansas.com)

## WARD III

Eric Mikkelson . . . . . 816-896-3787  
[emikkelson@pvkansas.com](mailto:emikkelson@pvkansas.com)

Andrew Wang . . . . . 913-671-8404  
[awang@pvkansas.com](mailto:awang@pvkansas.com)

## WARD IV

Laura Wassmer . . . . . 913-648-8379  
[lwassmer@pvkansas.com](mailto:lwassmer@pvkansas.com)

Brooke Morehead . . . . . 913-642-4793  
[bmorehead@pvkansas.com](mailto:bmorehead@pvkansas.com)

## WARD V

Courtney McFadden . . . . . 913-381-8089  
[cmcfadden@pvkansas.com](mailto:cmcfadden@pvkansas.com)

Dan Runion . . . . . 913-648-8861  
[drunion@pvkansas.com](mailto:drunion@pvkansas.com)

## WARD VI

Terrence Gallagher . . . . . 913-642-4163  
[tgallagher@pvkansas.com](mailto:tgallagher@pvkansas.com)

Ted Odell . . . . . 913-575-9068  
[todell@pvkansas.com](mailto:todell@pvkansas.com)

## IN THIS ISSUE:

NotifyJoCo . . . . . 1  
 Committee Spotlight . . . . . 3  
 PV Happenings . . . . . 4  
 JazzFest . . . . . 5-8

Public Safety . . . . . 9-10  
 Village Green . . . . . 10  
 Community Corner . . . . . 11  
 State of the Arts . . . . . 12

# COMMITTEE SPOTLIGHT

## Shop with a Cop

The fourth annual “Shop-With-A-Cop” event will be held in December, and is sponsored by the Prairie Village Municipal Foundation. “Shop-With-A-Cop” is a chance for the Prairie Village Police Department to team up with needy and deserving children in our community. Last year, the Police Department hosted ten children. Once again this year, police officers will take children holiday shopping and pay for their purchases. Children may buy gifts for both themselves and family members. After shopping, each child will be treated



to dinner and have their packages wrapped free of charge. If you are a Prairie Village business or resident who would like to make a contribution to this special program (monetary or specific gifts for the children), please contact Jennifer Wright at 913-385-4607.

Also, don't forget to drop off your old cell phone at the Police Station. The Police Department is collecting phones to help support the “Shop-With-A-Cop” program. A cell phone collection box is located in the Police Station lobby. Used phones may be dropped off at any time for recycling.



## Community Forum on Kansas Environmental Issues

You are invited to this year's Forum on Kansas Environmental Issues, Thursday, October 2, 2014 at Village Presbyterian Church, 6441 Mission Road, Prairie Village, KS. Our topic: “Environmental Policy & Politics in Kansas: Which Needs More Help?”

The Forum will be moderated by Burke Griggs, Kansas Assistant Attorney General and Fellow at the Woods Institute for the Environment at Stanford University. He will spark a lively conversation with Joshua Svaty, Vice President of The Land Institute, and Kimberly Svaty, Owner/Principal of Gencur Svaty Public Affairs. There will also be a brief legislative update by Zach Pistora, vice president of KNRC.

Doors open at 5:30 with exhibits by environmental organizations. Buffet-style dinner served at 6 PM and the Forum begins at 7 PM and ends at 8:30.

Admission is \$20 per person including dinner of local, seasonal foods by Blue Bird Bistro. Admission to the Forum only is \$10.

Pay online at <http://knrc.weebly.com/annual-community-forum-on-ks-environmental-issues.html> or in advance by mail to KNRC/Community Forum, 7301 Mission Rd., Suite 248, Prairie Village, KS 66208.

## UPCOMING EVENTS

DATE	EVENT	TIME	LOCATION
September 1st	Labor Day Observed		Offices Closed
September 2nd	Council Meeting	7:30 pm	Council Chambers
September 6th	Jazz Festival	2:00 pm - 11:00 pm	Harmon Park
September 15th	Council Meeting	7:30 pm	Council Chambers
October 2nd	Community Forum	5:30 pm	Village Presb Church
October 6th	Council Meeting	7:30 pm	Council Chambers
October 10th	State of the Arts Reception	6:00 pm - 8:00 pm	R.G. Endres Gallery
October 20th	Council Meeting	7:30 pm	Council Chambers

# Arts

## COUNCIL Prairie Village

Mark your calendar now to view these upcoming exhibits at the R.G. Endres Gallery and attend opening receptions honoring these talented artists. Gallery hours are Monday – Friday, 8:00 am – 5:00 pm. Gallery is located in City Hall at 7700 Mission Rd.

### SEPTEMBER

Join us for the September Art exhibit featuring Gloria Hawkins and Christina Ellis. Gloria and Christina have shared a love for photography and digital imaging for 16 years. Both have exhibited locally in group exhibits and one woman shows. A reception will be held on September 12 from 6:30 p.m. to 7:30 p.m.

### OCTOBER

The Prairie Village Arts Council is proud to sponsor the 8th Annual State of the Arts competition. Artists from the area submit works to be judged for entry in this exhibit with the hope of winning one of nine monetary prizes. A reception will be held on October 10th from 6:00 p.m. to 8:00 p.m.

# PV HAPPENINGS

## Prairie Village Teen Council

Prairie Village City Council is looking for six of the best and brightest Prairie Village high school students interested in participating in a new and exciting Prairie Village Teen Council program!

The mission is to give our teens an opportunity to learn and actively participate in municipal government, positively impacting our community, and gaining leadership experience. This program will coincide with the academic school year beginning this fall with graduation occurring next spring.

The teens will have an opportunity to work closely with City Council representatives, sit on the dais and participate in discussions during the Council Committee meetings, tour and learn about our Public Works department, do a ride-along and learn about our Police Department, attend committee meetings, a school board meeting, and work together on a public service project. We are excited to offer this very hands-on learning experience for our youth in Prairie Village.

There are requirements to participate in this program. The student must be a Prairie Village resident, be a sophomore, junior, or senior high school student, and the teens and the parents must be willing to sign an agreement to complete all of the requirements.

If you or someone you know is interested in applying for this position log onto the Prairie Village website. You can find this information at [pvkansas.com](http://pvkansas.com), by clicking on City Committees under the City Government tab. The first step in this process is for the teen to complete an application, write an essay, and obtain two letters of recommendation then submit the package to City Hall by Friday, September 26, 2014.

After the applications have been received and processed the chosen teens will be contacted. The goal is to officially begin the program in October. If you have any questions, please feel free to email City Council person Jori Nelson at [jnelson@pvkansas.com](mailto:jnelson@pvkansas.com).

## Tree Board

The Prairie Village Tree Board will have its annual Fall Seminar on October 1st at 7:00pm. Experts will speak about what types of trees are best for Prairie Village. For more information go to the City's website at [www.pvkansas.com](http://www.pvkansas.com).

## Popular Annual Financial Report

The City of Prairie Village is pleased to announce the second Popular Annual Financial Report (PAFR) for the 2013 Fiscal Year. The PAFR is designed to make the City's financial information more accessible. The PAFR includes a summary of City services, Statement of Net Position, revenues, expenditures, debt and an economic outlook.

To view the City's Popular Annual Financial Report visit <http://www.pvkansas.com/pafr>.

## Sign Up for the Citizens' Police Academy

The Prairie Village Citizens' Policy Academy is a community involved program designed to provide citizens with firsthand knowledge of the day-to-day operations of the police department. The goal of the academy is to improve the relationship between the community and its police officers by "personalizing" the Department. The Academy achieves this goal through lectures, visual aids and hands-on field work to give the attendees the ultimate insight into the functions of the Prairie Village Police Department.

The next Citizens' Police Academy will meet from 6:00 p.m. – 9:00 p.m. on Wednesday evenings for 11 weeks starting September 10, 2014. If you are interested in attending the Citizens' Police Academy, download the application from [www.pvkansas.com](http://www.pvkansas.com) and return it to the Prairie Village Police Department. Contact Sgt. Myron Ward at 913-385-4623 for further information.

## 30th Annual Peanut Butter Drive

The City of Prairie Village is once again teaming up with Harvesters Community Food Network to sponsor the 30th Annual Prairie Village Peanut Butter Week Food Drive from October 6 - 10.

Approximately 66,000 different people receive assistance through Harvesters' network in any given week. Harvesters can provide 5 meals to the hungry with a \$1 donation.

There are several ways you can donate to Harvesters during Peanut Butter Week:

- Bring jars of peanut butter to City Hall or your local Prairie Village school
- Contribute online at [www.harvesters.org](http://www.harvesters.org)

## CITY CONTACT INFORMATION

### CITY HALL & MUNICIPAL COURT

7700 Mission Rd  
Quinn Bennion, City Administrator  
Kate Gunja, Assistant City Administrator  
Joyce Hagen Mundy, City Clerk  
Lisa Santa Maria, Finance Director

### PUBLIC SAFETY

7710 Mission Rd  
Wes Jordan, Chief of Police

### PUBLIC WORKS

3535 Somerset Dr  
Keith Bredehoeft, Public Works Director

913-381-6464 • [info@pvkansas.com](mailto:info@pvkansas.com) • [www.pvkansas.com](http://www.pvkansas.com)



# HEADLINING THE 2014 PRAIRIE VILLAGE JAZZ FESTIVAL



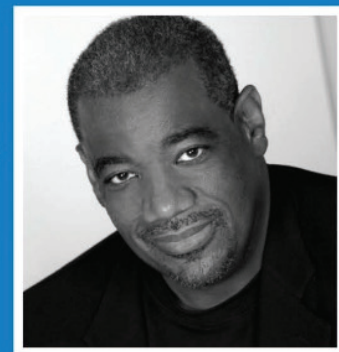
## DEBORAH BROWN

with JOE LOVANO  
and TERELL STAFFORD



## KEVIN MAHOGAN Y

with the JOE CARTWRIGHT TRIO



**SATURDAY**  
**SEPTEMBER 6**  
**~2014~**

**2:00-10:30PM**

ADULTS \$5.00,  
CHILDREN & STUDENTS FREE.

BENEFITING



## WORLD CLASS JAZZ IN THE HEART OF PRAIRIE VILLAGE

The Prairie Village Jazz Fest offers our community the opportunity to enjoy world-class jazz entertainment in beautiful Harmon Park, within walking distance for hundreds of Prairie Village residents and their families.

For the past four years the Prairie Village Jazz Fest has showcased top jazz acts, all with hometown Kansas City connections, in a fun, safe, family-friendly and convenient setting in the heart of Prairie Village.

Our elected leaders and city government, many local businesses and hundreds of committed volunteers generously contribute their time, resources and financial support to make the Prairie Village Jazz Festival possible each year.

The Prairie Village Jazz Fest takes great pride in celebrating this unique American art form with our neighbors and friends in the heart of our community. We are dedicated to ensuring that the Jazz Fest will continue to provide exceptional value as a thrilling cultural experience for fans of jazz and musical performance throughout Prairie Village and beyond.

We thank you for your support now and in the future. We look forward to seeing you September 6 and hope you enjoy the show.

5<sup>th</sup>  
Annual



SATURDAY  
SEPTEMBER 6  
~2014~

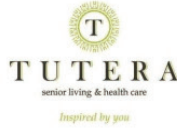
2:00-10:30PM

ADULTS \$5.00,  
CHILDREN & STUDENTS FREE.



Harmon Park  
7700 Mission Road  
Prairie Village, KS

**THANK YOU** to our **2014 Jazz Fest Sponsors** and **Contributors** for making this year's festival possible.



## FEATURED FOOD VENDORS



WILMA'S REAL  
GOOD FOOD

## FESTIVAL INFORMATION

### ADMISSION:

Adult Admission \$5.00, Children and Students: FREE

### OTHER INFORMATION

Beer, sangria, wine, soda and water available. Cash sales only.  
Festival merchandise and artist CDs available. Cash, check or charge.  
No coolers or outside food.  
No pets, excluding service animals.

### FREE PARKING AT:

SME Lot off Mission & 75th  
PV Pool Lot off Delmar  
Mission Bible Church Lot  
Community of Christ Church Lot  
ADA Drop-off and Parking available at the PV City Hall Lot

5<sup>th</sup>  
Annual



BENEFITING



## THE BLUE KNIGHTS

2 to 2:40 pm



## PROJECT H

3 to 3:50 pm



## SHAY ESTES

with Rod Fleeman & Matt Otto

4:10 to 5:00 pm



## THE JAZZ DISCIPLES

with Jason Goudeau & Stephanie Moore

5:20 to 6:10 pm



## BRAM WIJNANDS SWINGTET

6:30 to 7:20 pm



## KEVIN MAHOGANY

with the Joe Cartwright Trio

7:40 to 8:40 pm



## DEBORAH BROWN

with JOE LOVANO

and TERELL STAFFORD

9 to 10:30 pm





- 1 FOOD VENDORS**
- 2 VIP & CORPORATE TENTS**
- 3 BEER - WINE - SANGRIA**
- 4 MERCHANDISE TENT  
ARTIST MEET & GREET**

- E FESTIVAL ENTRANCE**
- R RESTROOMS**
- ? INFORMATION**

**Adults \$5.00,  
Children & Students Free.**

**Parking is available at  
Shawnee Mission East High School  
Prairie Village Pool and  
two nearby churches.**



# PUBLIC SAFETY

## Crosswalk Safety Laws

Crosswalks are an important safety feature in our community. Crosswalks are commonly found near business areas and schools. They are also strategically located throughout other areas of Prairie Village, often at busy intersections, and are intended to improve pedestrian safety.

For drivers:

- Drivers are required to yield the right-of-way, by slowing down or stopping, to pedestrians entering or crossing streets within a crosswalk
- Drivers are prohibited from stopping their vehicle on a crosswalk, which would interfere with a pedestrian’s use of the crosswalk
- Whenever a vehicle is stopped at a marked or unmarked crosswalk at an intersection to permit a pedestrian to cross the street, other drivers approaching from the rear are prohibited from passing the stopped vehicle
- Drivers are required to comply with the directions of uniformed school crossing guards, which are assigned to locations near local elementary schools

For pedestrians:

- Pedestrians should utilize a crosswalk for crossing roadways whenever possible
- Pedestrians are required to obey the traffic control signals that indicate when to “Walk” or “Don’t Walk”
- Pedestrians are prohibited from suddenly leaving a curb and walking or running into the path of an oncoming vehicle
- Pedestrians are prohibited from crossing intersections diagonally unless within a crosswalk

Tips for pedestrians:

- Always cross at marked crosswalks or intersections
- Wait for gaps in traffic before attempting to cross streets
- Wait for vehicles to stop before entering the street
- Watch for turning vehicles and make sure the drivers see you before crossing
- Be wary- look LEFT, RIGHT, and LEFT again before crossing
- Don’t rely on pedestrian signals- look and listen for vehicles before crossing



AHEAD

School Crossing ahead



AHEAD

Crosswalk ahead

These signs warn drivers of school crossing and crosswalk locations on the street ahead. Upon seeing these signs, drivers should use caution approaching the crosswalk and prepare to slow or stop to yield to pedestrians.



School Crossing here



Crosswalk here

These signs, along with the arrows, are used to indicate the exact location of a crosswalk to drivers. These signs are to remind drivers of the locations of mid-block crosswalks and school crosswalks. Drivers should be prepared to slow or stop in order to yield the right of way to pedestrians at these locations.

## PUBLIC SAFETY

### Stay Safe in School

The school year has started and it's time again to remind our children about some important crime prevention tips as they head off to school.

- Secure your electronic devices such as tablets, phones, MP3 players, and cameras in a locked locker when not in use.
- Backpacks are commonly used to store and carry more than books these days. Don't leave your backpack unattended in a classroom or hallway or someone may walk away with your valuables. Replacing school books alone can be quite expensive in themselves.
- Don't leave valuables in vehicles that are visible to anyone walking past. If possible, put them in the trunk where they are out of sight.
- Record the serial and model numbers of your electronic devices. In the event they are ever lost or stolen, this may assist in locating and returning these items to the rightful owner.
- Label sports equipment with your name or some other identifying mark.
- When walking to school or on campus, be aware of other people and your surroundings. Walk with friends if possible. Wearing headphones while walking may prevent you from hearing someone approaching you from behind or approaching vehicles.
- Don't accept rides from strangers and report suspicious activity to the police and school administration.
- Contact your insurance company to inquire about coverage for liability and or loss of property due to fire or theft of your student(s) property while they are living in a dorm or off-campus housing.

## VILLAGE GREEN

### Emerald Ash Borer

The City is formalizing plans for addressing the Emerald Ash Borer issue. For the latest information please check out the City's website at [www.pvkansas.com](http://www.pvkansas.com).



### Recycling Reminders

Residents can set out an unlimited amount of recyclables on the curb for recycling on their regular trash pickup day. A recycling bin is provided by Deffenbaugh Industries. For additional recycling, residents can use their own containers, including trash barrels. These containers need to be well marked with "Recycling" or the universal recycling symbol. Residents who live in the following homes associations must check with their homes association to verify recycling procedures: Town & Country and Countryside East.

Recyclables can be commingled loosely in the recycling bin. Corrugated cartons should be cut or reduced to 2' x 2' and placed under the recycling bin. All containers should be thoroughly rinsed but labels are okay. Plastics #1-7 are accepted including lids and caps. Cartons are also recyclable at the curb including milk, juice and soup cartons.

Glass is not accepted at the curb but can be recycled at any Ripple Glass recycling bin.

Visit [www.rippleglasskc.com](http://www.rippleglasskc.com) for a list of drop-off locations. There are also two companies offering curb side recycling on a monthly basis for a fee. Visit [www.recyclepinkkc.com](http://www.recyclepinkkc.com) or [www.atlasglasskc.com](http://www.atlasglasskc.com) for more information.

For a complete list of acceptable and unacceptable materials, visit [www.pvkansas.com/recycling](http://www.pvkansas.com/recycling). Some items that cannot be recycled at the curb can be recycled other places or reused. To find out where to recycle these items, visit [www.recyclespot.org](http://www.recyclespot.org).



**Visit [www.pvkansas.com/projects](http://www.pvkansas.com/projects)**

# COMMUNITY CORNER

## Stories from Tom Bass, the Horse Whisperer, at Brighton Gardens

Join us on Thursday September 18 at 3:30 p.m. at Brighton Gardens for a storytelling event with John Anderson (Brother John) portraying an elder Tom Bass in an interactive, one-man show. Mr. Bass—in his traditional high hat and riding suit—is an African American, Missouri native, horse whisperer, show horse performer and trainer from the early 1900s. Brother John will share stories of Bass' birth into slavery, anecdotes of his +50 years as a professional equestrian, and his journey to world fame, eventually creating a successful horse show in Kansas City which later becomes known as the "American Royal". This program talks about his triumphs as well as how he overcame adversity and racism to become highly recognized and respected by kings, queens, presidents, and captains of industry in the early 1900.

Following the storytelling will be a chuck wagon dinner for \$7.50 with live music on the patio, weather permitting. Registration is requested but not required. Call (913) 262-1611 to register. All ages are welcome.

## Rose Awards:

Dennis Patton, Horticulture Agent for Johnson County K-State Research and Extension, will be the speaker for the September meeting of the Johnson County Rose Society. He will lead a discussion that will focus on "The Best and the Worst" roses based on the data collected by the K-State Research and Extension office and the shared experiences of our members and guests. Dennis, an Extension Agent for over 30 years, is responsible for management of The Master Gardeners, consulting with the horticulture industry and local governments, and coordination of a wide variety of community education activities. We invite members and guests to bring reports and pictures of roses that thrived in their gardens and those that didn't do so well! Maybe this meeting will help you decide if you should give that not-so-greatly blooming bush another year, transplant it to another location, or just admit that it's not the right rose for your garden and move it out to make room for something that might be happier there!

The meeting will be held on Thursday, September 11, at 7 pm at the Prairie Village Community Center at 7720 Mission Road, Prairie Village Kansas. The meeting is free and open to the public. Refreshments will be provided.

Members and guests are welcome to take advantage of the "Consulting Rosarians Corner" for a free individual consultation with a Consulting Rosarian about specific questions or concerns regarding all aspects of rose growing and care. The Consulting Rosarians will also give timely tips about caring for roses "This Month in the Rose Garden".

For more information about the meetings, programs, and other activities of the JCRS, or for membership details, please visit their website at <http://www.rosesocietyjoco.org>. You can also visit them on Facebook at [www.facebook.com/JoCoRoses](http://www.facebook.com/JoCoRoses).

## "CELEBRATE – 60" at Indian Hills Middle School

The up-coming school year (2014-2015) will be the 60th year that Indian Hills Junior High/Middle School, 6400 Mission Rd, has provided exceptional educational opportunities to young ladies and gentleman of junior high and middle school age.

The day of "Celebrate – 60" will be Friday, October 10. One special event scheduled for that Friday, "10-10", is the unveiling of a display that lists families (and dates) with two or more generations who have attended Indian Hills over these 60 years. Send names and dates to "Celebrate 60", 5216 W 64th St, Prairie Village, KS 66208.

### Schedule for Friday, October 10, 2014

- 9:00 a.m. to 11:40 a.m. Former faculty, staff and PTA Presidents tour the building
- 11:45 a.m. to 12:45 p.m. Buffet lunch in the library for former and current staff and PTA Presidents
- 1:00 p.m. to 4:00 p.m. **Open House**

## Renovation Sensation Homes Tour

### **Wednesday, September 17th from 10 am - 7 pm**

The Renovation Sensation Homes Tour is celebrating its 10th Anniversary this year! The tour will be held on Wednesday, September 17th from 10 am-7 pm. All proceeds from the tour will directly benefit SHARE, which is recognized as the largest student-led community service organization in the country.

SHARE is an integral part of Shawnee Mission East High School and creates the opportunity for all students to serve the surrounding community. Students involved in these projects provide thousands of hours of community service yearly to agencies and projects in the Kansas City metro area.

This year's tour, dubbed "Ren Sen Ten", promises to be a special event. Co-chairs, Allison Harding and Kelly LeGard, and their committee have added exciting touches to mark the 10th anniversary by including a fifth tour home and scheduling a food truck for lunch from Blue Moose in addition to KC Cupcake Co. at another tour site.

Tour tickets prices will be \$25 in advance and \$30 the day of the tour. (All ticket prices include sales tax). They will be available at area grocery stores, including Hen House Market in Corinth, Prairie Village, Leawood and Fairway and the Prairie Village Hy-Vee.

The Patrons' Party will be held on Tuesday, September 16th, from 5:30-7:30 pm at the fabulous home of Molly and Kraig Kohring (4210 Homestead Drive, Prairie Village, KS). Patrons' Party reservations will be available for \$75 (party only) or are included with all sponsorship levels. Please see attached Sponsor form or visit our website. <http://smef.org/RenSen2014>

For more information, please visit the Facebook page, "Renovation Sensation Homes Tour 2014" or contact [RenSenSME@gmail.com](mailto:RenSenSME@gmail.com).

### **The homes featured this year are:**

- 6509 Granada Drive, Prairie Village
- 3308 W 71st St, Prairie Village
- 3820 W 65th Terr, Mission Hills
- 8432 Cherokee Lane, Leawood
- 8840 Fairway Street, Leawood



**Prairie Village Municipal Office**  
**7700 Mission Road**  
**Prairie Village, KS 66208**

Presorted Standard  
US Postage  
**PAID**  
Permit No. 549  
Shawnee Mission, KS

### **Reader Feedback**

Please send your comments to:  
Prairie Village Voice  
7700 Mission Rd  
Prairie Village, KS 66208  
info@pvkansas.com  
913-385-4662

### **Prairie Village e-News**

Receive Prairie Village e-News in your inbox. Sign-up at [www.pvkansas.com/enews](http://www.pvkansas.com/enews) and tailor your preferences to fit your interests.



Follow us on Twitter



Like us on Facebook

## **STATE OF THE ARTS 2014**

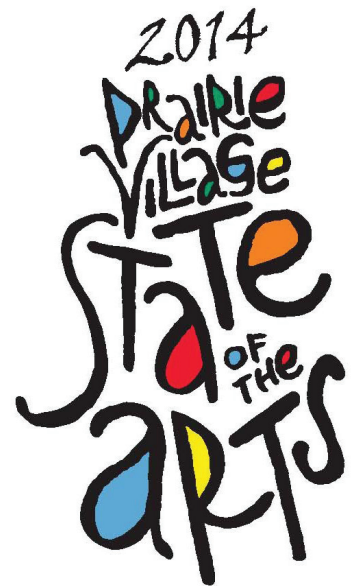
The 8th Annual State of the Arts Gala is quickly approaching and you definitely won't want to miss the festivities. Since its inception by the Prairie Village Arts Council in 2007, State of the Arts has proven to be better every year and this year promises to be no exception. Mark your calendar now for the evening of October 10, 2014, as the Prairie Village Arts Council members extend a warm invitation for you to attend the awards reception.

The State of the Arts exhibition is a juried event featuring two-dimensional or three-dimensional artwork. Kelly Kuhn, owner of Blue Gallery, is this year's juror.

It is anticipated the jurist will select approximately forty pieces of original art, of varying mediums, for this year's show. From these forty pieces, nine prizes of varying amount will be awarded including the R.G. Endres Memorial Best of Show Award for \$1,000. The State of the Arts prizes are made possible by our generous sponsors.

In addition to your opportunity to view exceptional original artwork, the opening reception offers the opportunity to meet the various artists while enjoying live music, hors d'oeuvres, sweets and wine.

The selected works from this year's State of the Arts will be on display at the R.G. Endres Gallery in City Hall, 7700 Mission Rd, throughout the month of October. The awards reception is free and will take place from 6:00 p.m. to 8:00 p.m. with the awards announcement at 7:30 p.m. We look forward to seeing you on October 10.



**VISIT US AT [WWW.PVKANSAS.COM](http://WWW.PVKANSAS.COM)**