



The cities of Overland Park, Leawood, and Prairie Village are conducting a

# Recycling Extravaganza

**Saturday, May 3rd, 2014 • 8:00 am - 2:00 pm**

**Parking lot of the vacant retail on the NE corner of 95th and Metcalf • Overland Park, KS**

Confidential documents will be destroyed onsite by ProShred Security.  
Suggested donation for this service is \$5 for a standard file box.

A charge of \$10 for tube type TVs and CRT monitors only. For 10 or more computers, contact Surplus Exchange at 816.472.0444 to schedule a pickup at your location.

## ACCEPTED ITEMS:

### Working/Non-Working Electronics

- computers, radios, stereos, CD players, small electronics, flat panel TVs and monitors, printers and cell phones, etc. (no charge)
- tube TVs and CRT monitors (\$10 each)

### ProShred Security

- confidential papers for shredding
- paper clips and staples are OK - no loose leaf binders
- donations suggested

### Heartland Habitat for Humanity, ReStore

- new and usable building materials, hardware, fixtures, appliances

### Goodwill Industries

- clothing, housewares, small appliances, furniture, toys, and many other items

### Fabric Recycles

- unused fabric and notions
- unusual lengths, sizes of fabric and trims, notions, machines

### Revolve

- bicycles and bike accessories (e.g. helmets, racks, and tools) - working and non-working for repair and reuse or recycling

### Shoe Kansas City

- gently used shoes of all kinds

### Coalition for Independence

- durable medical equipment (wheelchairs, hospital beds, walkers, shower chairs, etc.)

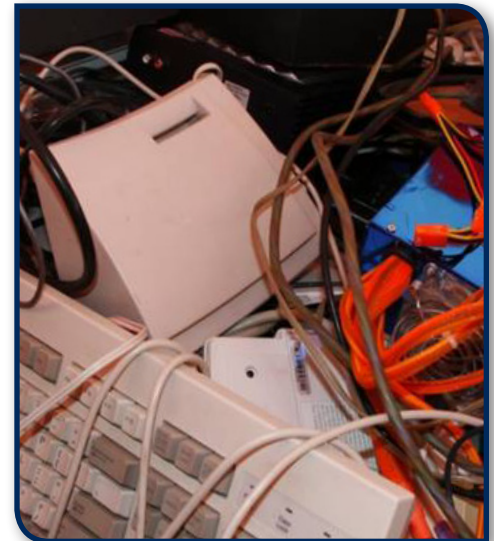
### Greater Kansas City Community Gardens

- shovels, spades, garden forks, cultivators, garden hoes, rakes (no leaf rakes), garden hand tools, any strange misc. garden tool, wheel barrows, watering wands, and water heads

- **no chemicals or hoses**

### Rehabilitation Institute

- books (hardcover and soft), magazines, and newspapers



### Unleashed Pet Rescue

- crates, kennels, dog beds, sheets, towels, dog toys, tie outs
- scoopable cat litter, cat towers, cat toys
- bags of dry dog food (OK if open), cans of cat and dog food

### Miscellaneous

- eyeglasses, sunglasses, hearing aids

Please visit the Overland Park website <http://opkansas.org> for more information or contact Jim Twigg at 913.895.6273 or via email: [jim.twigg@opkansas.org](mailto:jim.twigg@opkansas.org).