


STANDARD DETAILS INDEX

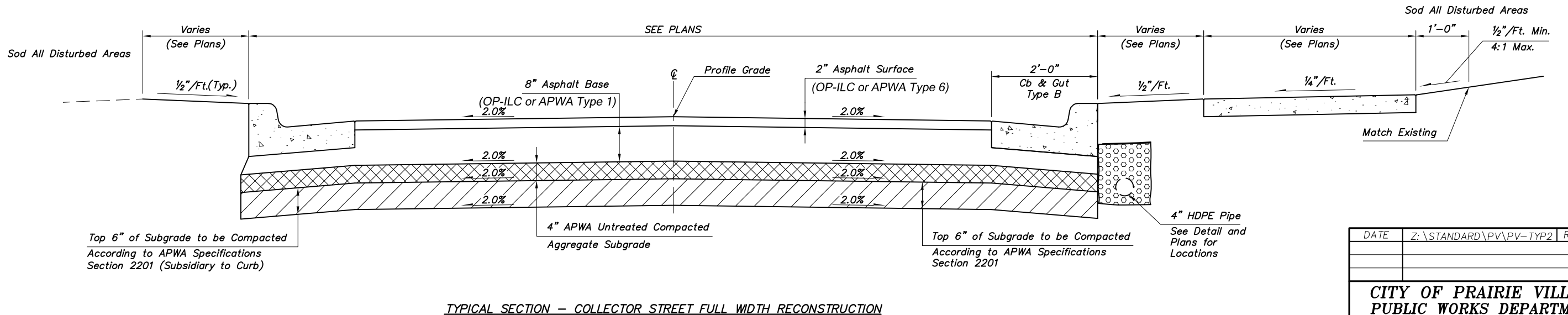
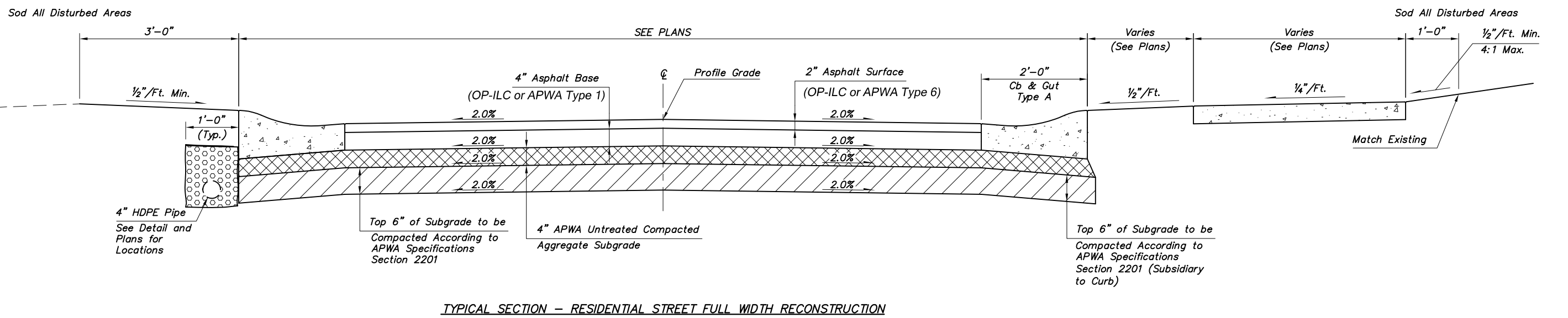
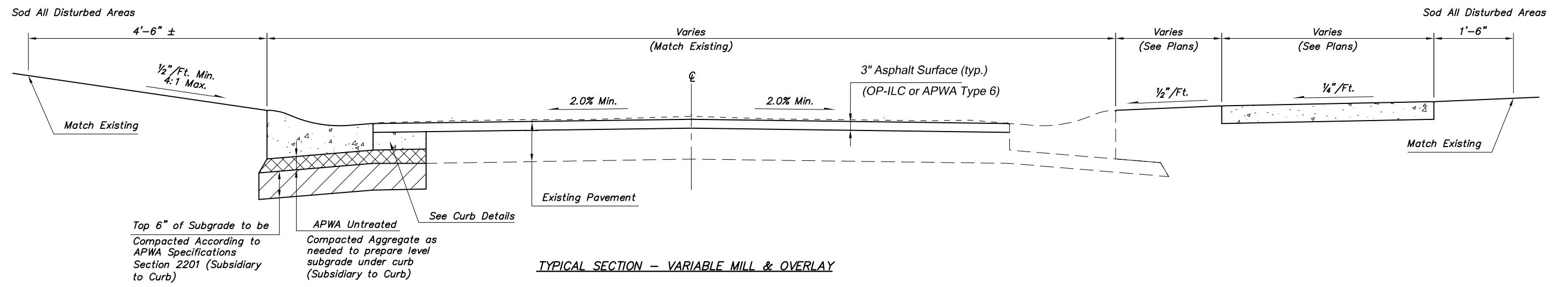
X=Included in Plans

ROADWAY DETAILS			
X	NO.	DRAWING DESCRIPTION	APPROVED DATE
	101.02	Typical Street Sections Asphalt	3/3/2022
	101.03	Typical Street Sections Concrete	2/14/2005
	101.04	Asphalt Pavement Repair Details	3/3/2022
	102.02	HDPE Underdrain	2/14/2005
	103.01	Curb Details	2/6/2006
	103.02	Mower Access Curb Detail	6/4/2005
	104.01	Residential Drive Detail	6/4/2006
	105.01	Commercial Entrance Detail	2/3/2006
	106.01	Sidewalk Details	3/4/2022
	106.02	Integral Sidewalk Retaining Wall Details	3/4/2022
	106.03	Detectable Warning Panel Details	3/4/2022
	106.04	Type 1 Sidewalk Ramp Detail	2/6/2006
	106.05	Type 2 Sidewalk Ramp Detail	2/6/2006
	106.06	Type 3 Sidewalk Ramp Detail	2/6/2006
	106.07	Type 4 Sidewalk Ramp Detail	3/4/2022
	106.08	Type 5 Sidewalk Ramp Detail	2/6/2006
	106.09	Type 6 Sidewalk Ramp Detail	5/4/2012
	107.01	Concrete Joint Detail	11/6/2008
	108.01	Concrete Pavement Details	2/14/2005
	111.01	Concret Step Details	2/14/2005
	112.01	Handrail Details	3/4/2022
	113.01	Street Name Sign Details	5/14/1997
	114.01	Sign Post Details	5/14/1997
	115.01	Conduit Marking Detail	1/10/2004
	116.01	Pavement Marking Details	1/10/2004
	116.02	Speed Table with Pavement Markings	3/4/2022
	117.01	Street Intersection Sight Line Obstruction Detail	5/14/2007
	117.02	Street Sight Line Obstruction Details	12/12/2001
	118.01	C.A.R.S. Sign	3/2/2022

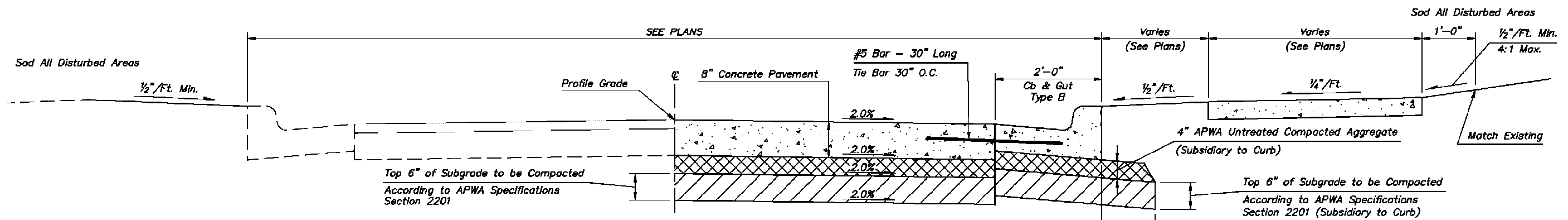
STORMWATER/EROSION CONTROL DETAILS			
X	NO.	DRAWING DESCRIPTION	APPROVED DATE
	201.01	Area Inlet Details	3/1/2022
	202.01	Grate Inlet Details	1/2/1998
	203.01	Junction Box Details	3/1/2022
	204.01	Standard Curb Inlet	2/19/2003
	204.02	Standard Curb Inlet Steel Frame	3/1/2022
	204.04	Storm Manhole	3/1/2022
	204.06	Covers & Steps for Structures	2/14/2003
	205.01	Street Patch Detail	3/1/2022
	205.02	Street Trench Plating	2/19/2003
	206.01	Pipe Embedment Details	2/14/2003
	207.01	Collar and Pipe Details	2/14/2003
	208.01	Concrete Ditch Liner Detail	2/14/2003
	209.01	Concrete Channel Liner Detail	1/6/1998
	210.01	Storm Sewer Branch Connection Detail	2/14/2003
	211.02	Straw Bale & Small Rock Ditch Check	2/14/2003
	211.03	Installation of Silt Fence and Straw Bales	2/14/2003
	211.04	Area, Grate, and Curb Inlet Filters	2/14/2003

MISCELLANEOUS DETAILS			
X	NO.	DRAWING DESCRIPTION	APPROVED DATE
	301.01	Temporary Construction Fencing	2/13/2003
	302.01	Mailbox Installation	2/13/2003
	303.01	SURVEY Monument Box Details	1/30/2004
	304.01	Tree & Shrub Planting	1/27/2003
	304.02	Right of Way Tree Planting Details	12/12/2001
	304.03	Tree Trim Detail	12/12/2001

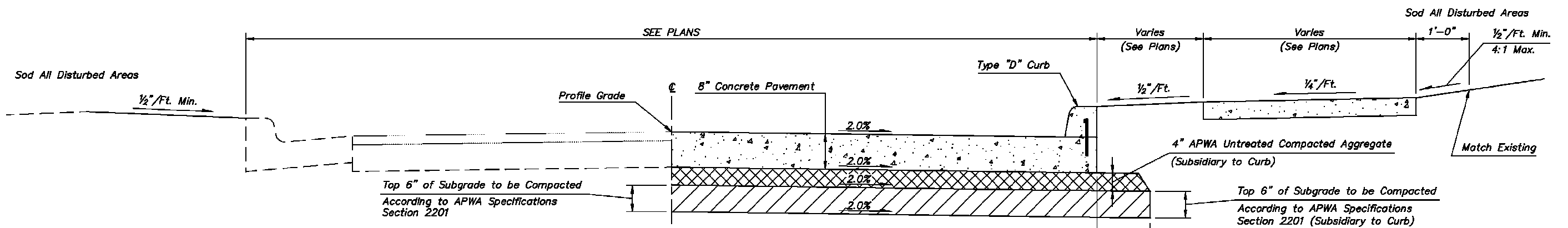
DATE	Z:\STANDARD\PV\PV-INDEX.DWG	REVISIONS
CITY OF PRAIRIE VILLAGE PUBLIC WORKS DEPARTMENT		
 STANDARD DETAILS INDEX		
STANDARD DETAIL NUMBER: 100.00		




DATE	Z:\STANDARD\PV\VP-TYP2	REVISIONS
CITY OF PRAIRIE VILLAGE PUBLIC WORKS DEPARTMENT		
TYPICAL STREET SECTIONS ASPHALT		
STANDARD DETAIL NUMBER: 101.02		

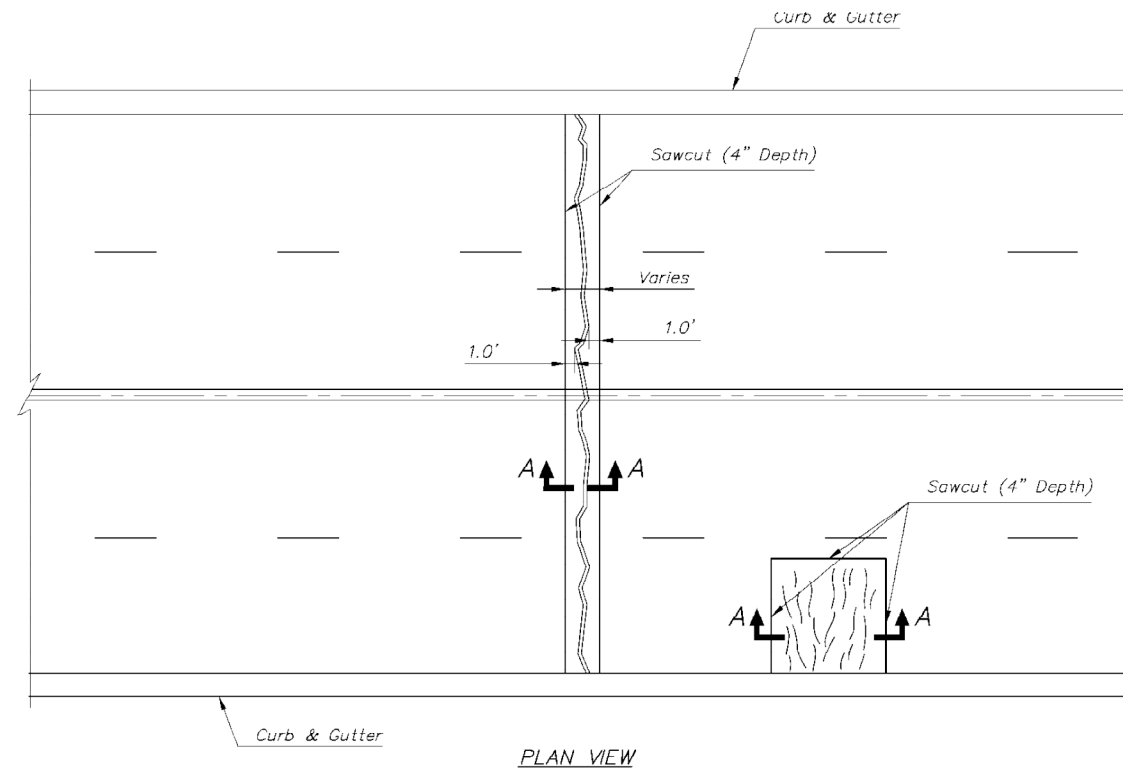
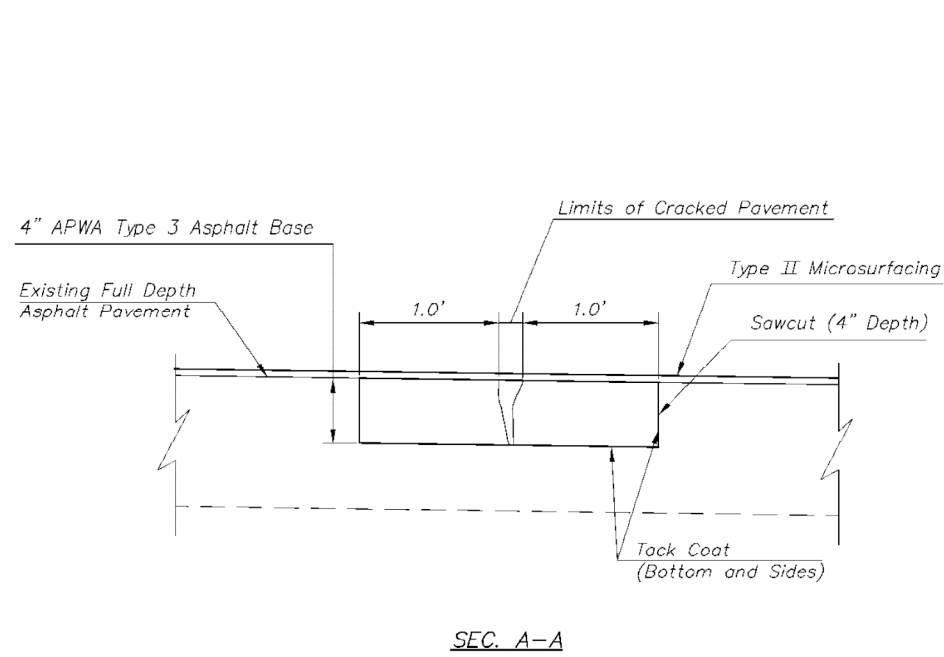


TYPICAL SECTION - 8" CONCRETE PAVEMENT WITH 2'-0" CURB AND GUTTER

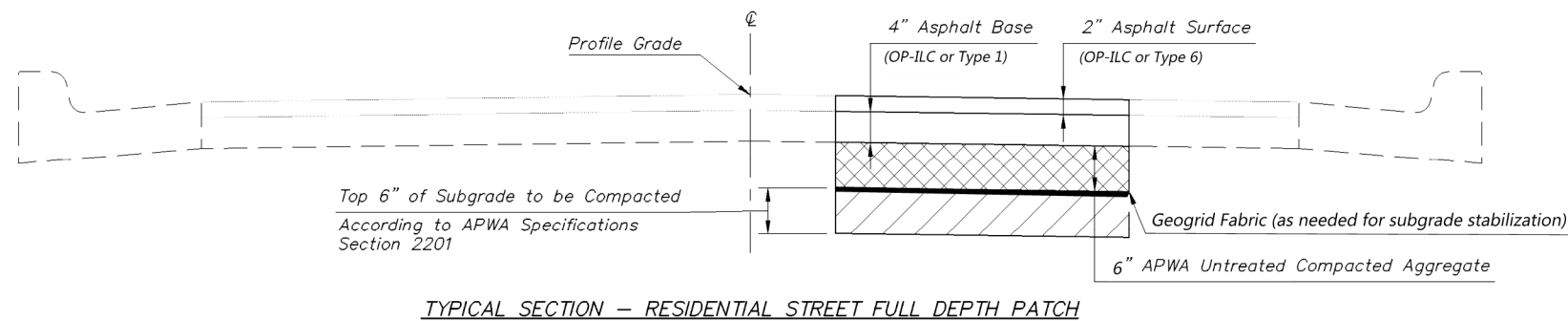
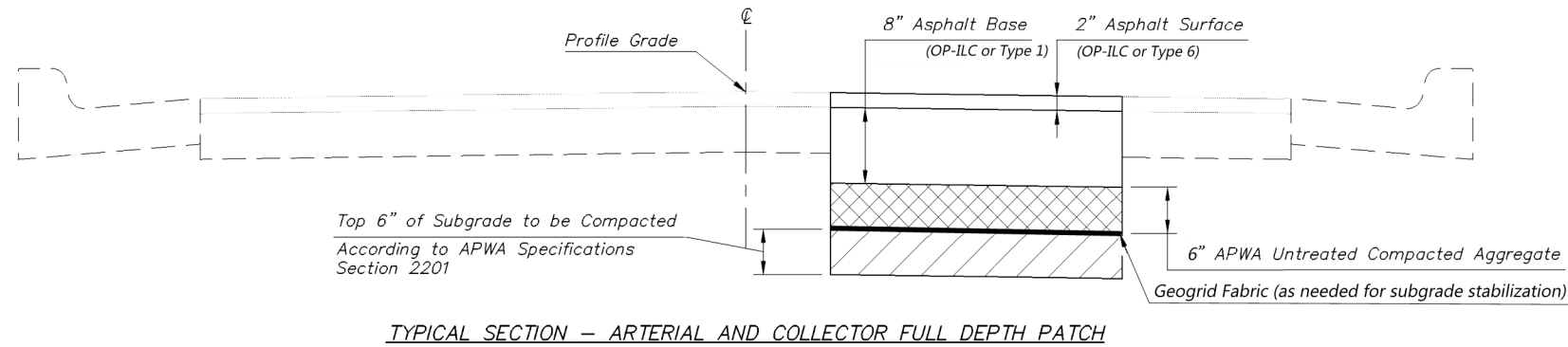



TYPICAL SECTION - 8" CONCRETE PAVEMENT WITH TYPE "D" CURB

DATE	Z:\STANDARD\PV\PV-TYP3	REVISIONS
CITY OF PRAIRIE VILLAGE PUBLIC WORKS DEPARTMENT		
 TYPICAL STREET SECTIONS CONCRETE		
STANDARD DETAIL NUMBER: 101.03		



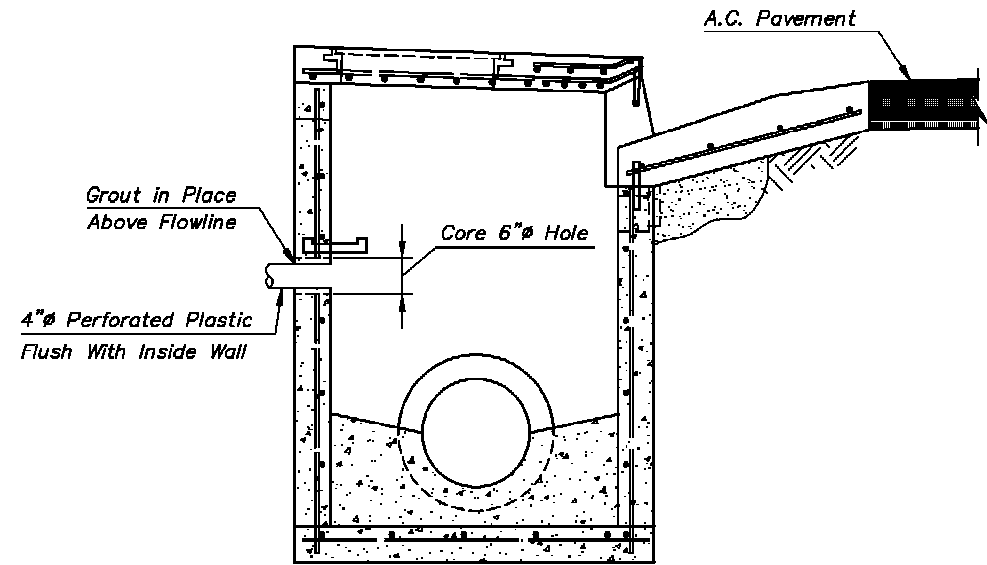
ASPHALT SURFACE REPAIRS (4")



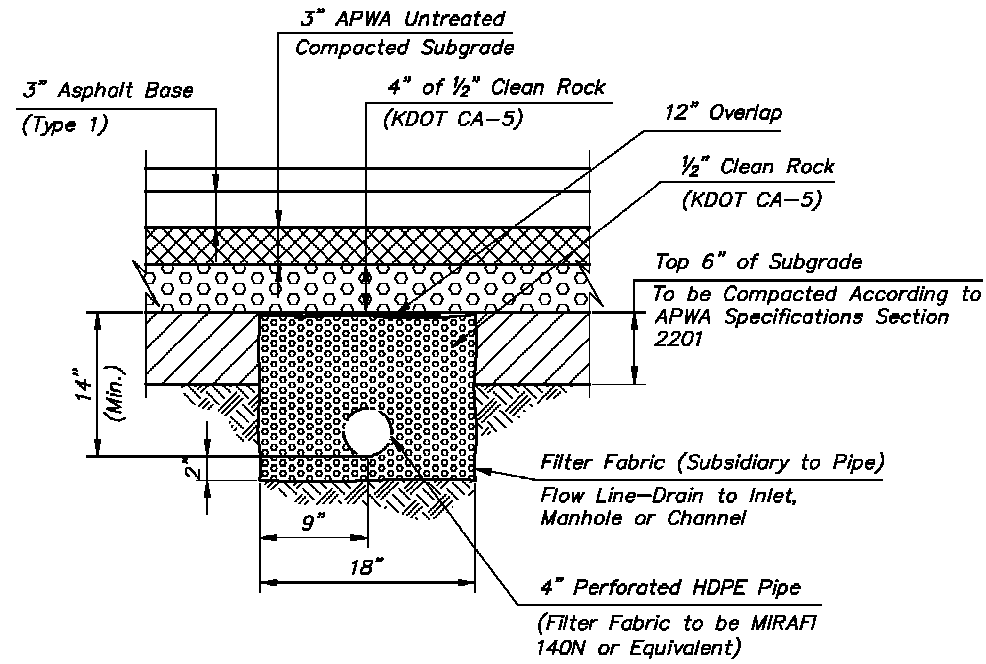
DATE	Z:\STANDARD\PV\PV-PW\MT REPAIR	REVISIONS
CITY OF PRAIRIE VILLAGE PUBLIC WORKS DEPARTMENT		
 ASPHALT REPAIR DETAILS		
STANDARD DETAIL NUMBER: 101.04		

NOTES:

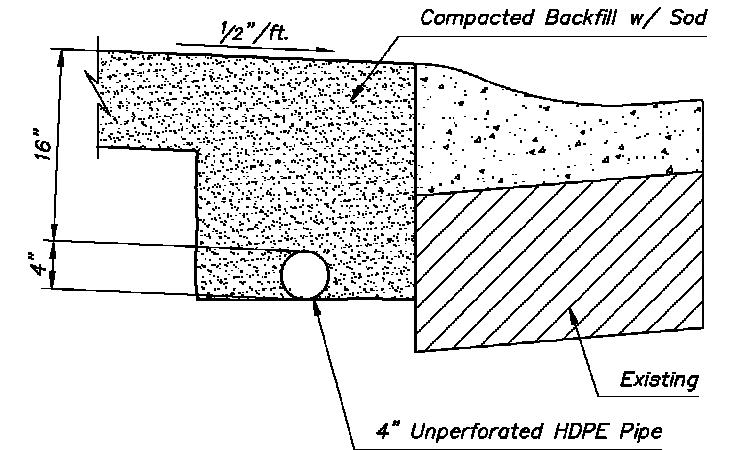
1. Granular fill to be crushed stone or pea gravel with not less than 95% passing 1/2" and not less than 95% to be retained on a #4.
2. Fill to be placed in not more than 6" layers and compacted.
3. Filter fabric to be MIRAFI 140N or equivalent. Use non-shrink grout for packing pipe in knocked-out openings of curb inlets.



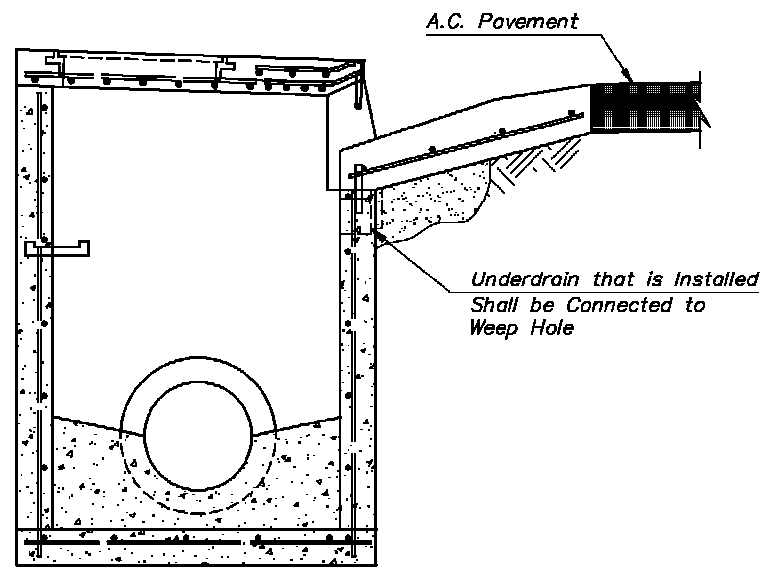
UNDERDRAIN TO EXISTING CURB INLET CONNECTION



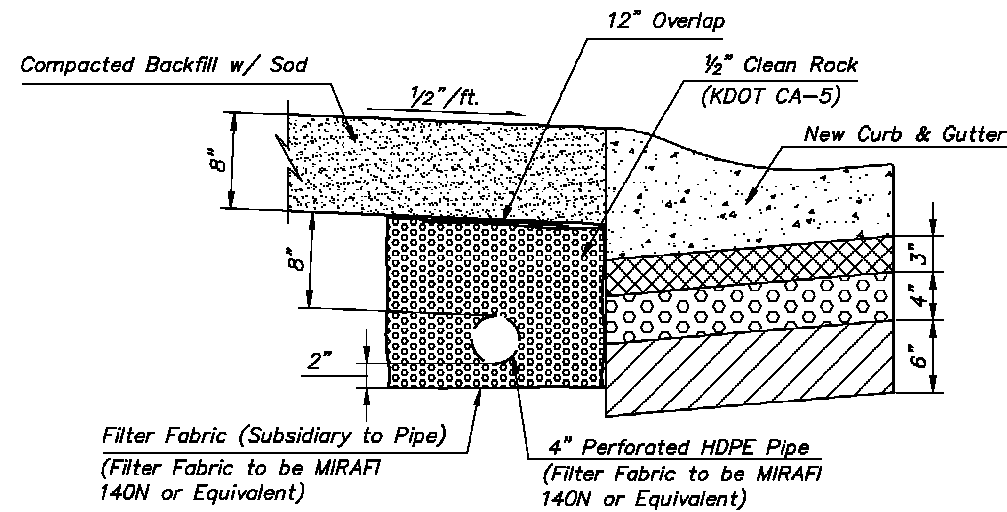
**PIPE UNDERDRAIN
SHOWN UNDER PAVEMENT**




**OUTLET PIPE UNDERDRAIN
SHOWN BEHIND CURB & GUTTER
SEE PLANS FOR LOCATIONS**

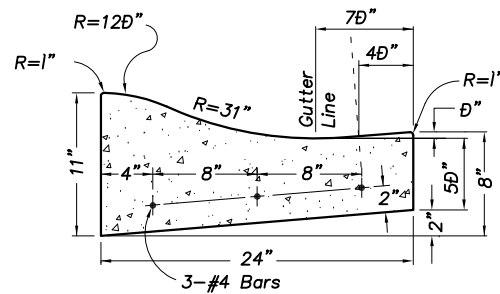


UNDERDRAIN TO NEW CURB CONNECTION

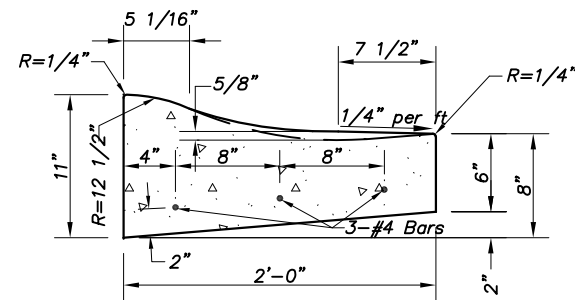


**NEW CURB & GUTTER PIPE UNDERDRAIN
SHOWN BEHIND CURB & GUTTER
SEE PLANS FOR LOCATIONS**

DATE	Z:\STANDARD\PV\PV-HDPE.DWG	REVISIONS
CITY OF PRAIRIE VILLAGE PUBLIC WORKS DEPARTMENT		
		HDPE UNDERDRAIN
STANDARD DETAIL NUMBER: 102.02		

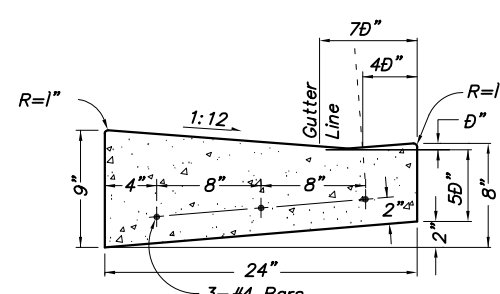


TYPE "A" CURB & GUTTER

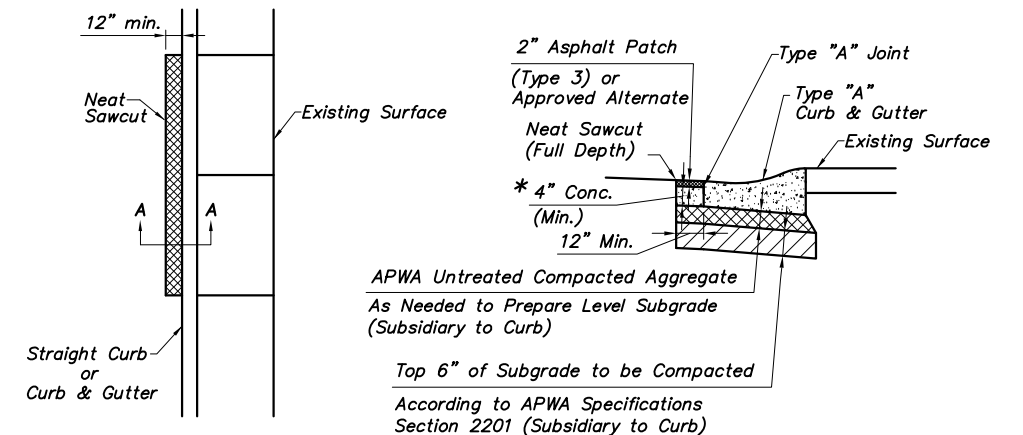


Type "A - Dry" Curb & Gutter

NOTE: in transitions, water shall flow from the gutter of Type "A" curb to the lip of Type "A-Dry" curb at 0.5% min. slope.



TYPE "F" CURB & GUTTER



PLAN VIEW

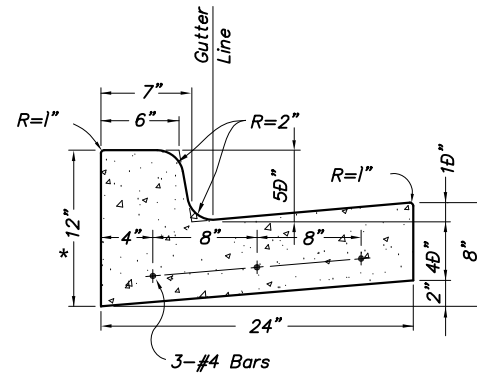
APWA Untreated Compacted Aggregate
As Needed to Prepare Level Subgrade
(Subsidiary to Curb)
Top 6" of Subgrade to be Compacted
According to APWA Specifications
Section 2201 (Subsidiary to Curb)

* Concrete patch shall be a minimum of 4" thick or match the thickness of the adjacent pavement.
SECTION A-A
(Type "A" Curb & Gutter)

NOTE:

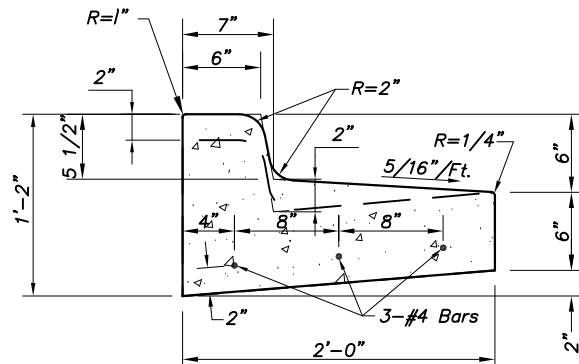
This detail shall not be used for curb replacement adjacent to full depth asphalt patch, concrete pavement or full pavement reconstruction.

CURB REPLACEMENT AT EXISTING ASPHALT



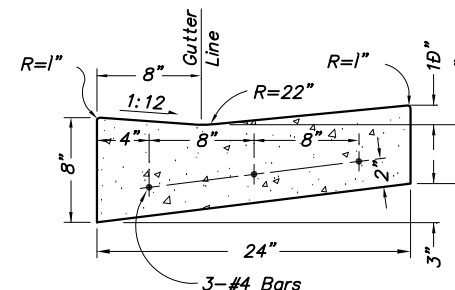
TYPE "B" CURB & GUTTER

* 11" TYPE "B" may be used when replacing TYPE "A" curb to mitigate grading issues.

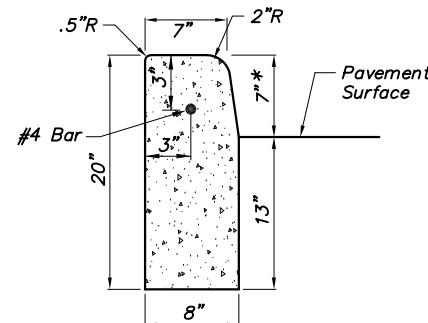


Type "B - Dry" Curb & Gutter

NOTE: in transitions, water shall flow from the gutter of Type "B" curb to the lip of Type "B-Dry" curb at 0.5% min. slope.

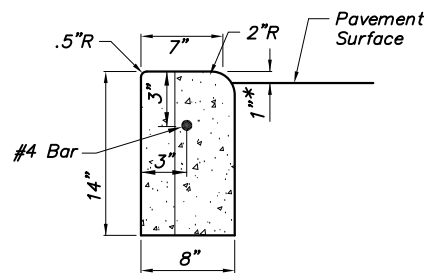


TYPE "C" CURB & GUTTER



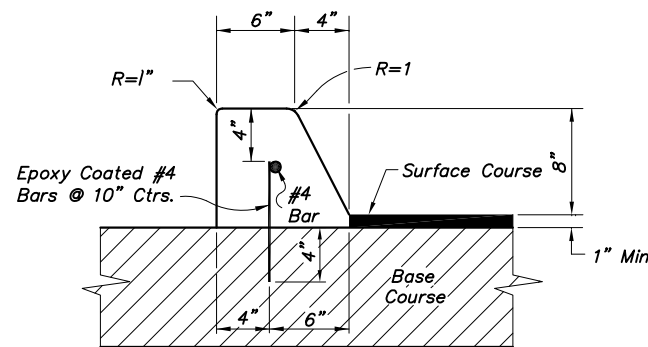
TYPE "E" CURB

* Except where noted otherwise.



TYPE "G" CURB

* Except where noted otherwise.



TYPE "D" CURB

NOTES:

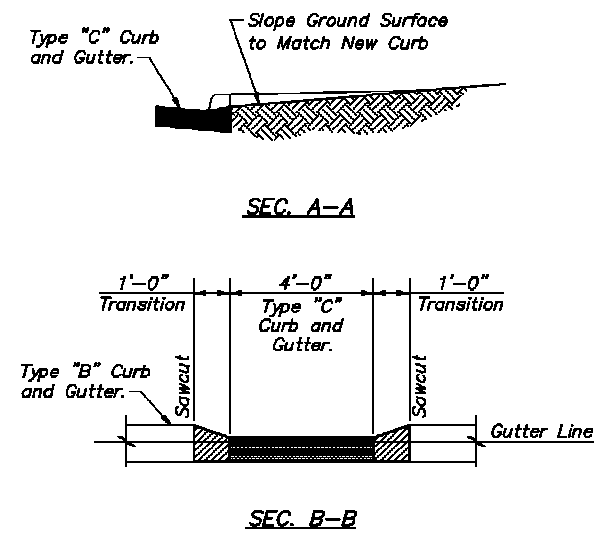
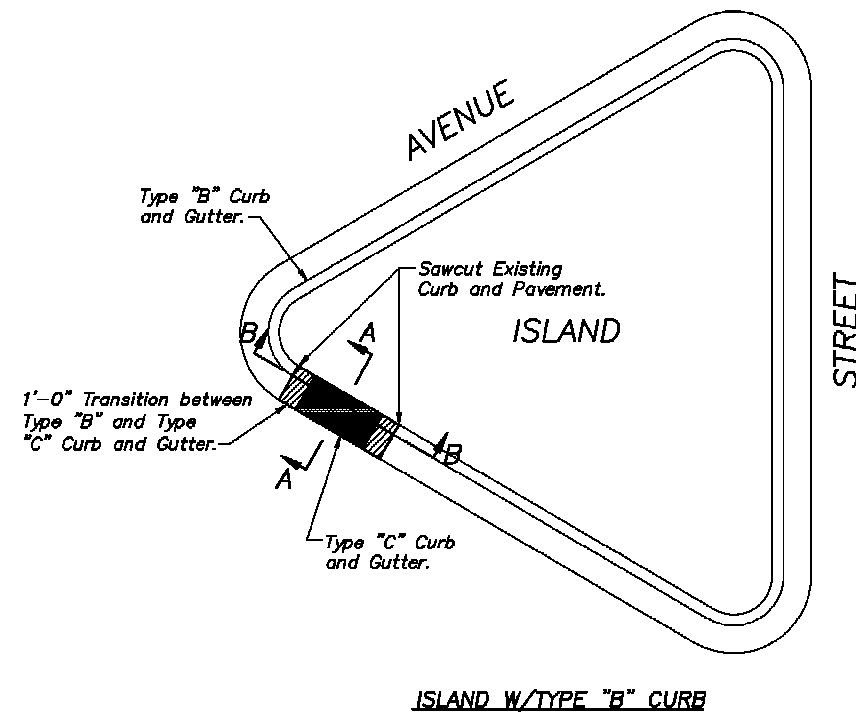
- 1/2" premolded expansion joints shall be placed at points of curvature, curb returns, curb inlets, and at 250' centers. Three 24" Epoxy Coated Smooth #4 Bars at 8" on center shall be used across these joints and supported on fabricated bar supports. The #4 Bar shall be pregreased. Contraction joints shall be 2" deep, and placed at 10' intervals equally spaced between expansion joints.
- Three 24" Epoxy Coated Smooth #4 Bars with 1/2" premolded expansion shall be placed where new curb matches existing curb.
- Steel reinforcing not required when curb and gutter is placed on a minimum 4" thick asphalt base.
- All reinforcing steel shall be supported on fabricated steel bar supports at 3'-0" maximum spacing.
- Type "B" and "C" curb and gutter are related curb and gutter types. Type "C" curb and gutter to be used through sidewalk ramps and commercial driveways (non-declined) on streets with type "B" curb and gutter.
- Type "A" and "F" curb and gutter are related curb and gutter types. Type "F" curb and gutter to be used through sidewalk ramps and residential driveways (non-declined).
- Type "E" and "G" curb are related curb types. Type "G" curb to be used through residential drives.
- All islands shall be constructed with type "B" curb and gutter with a 6' minimum section of type "C" curb and gutter for mower access. See Mower Access Curb Detail.
- All concrete used in this work shall be KCMMB 4K.

DATE	REVISIONS
3/3/22	Added note for 11" Type "B" curb
12/18/03	Revised Type "C" and "F" Curbs
2/06/06	Revised
11/06/08	Added Type "G" curb & Note # 7

**CITY OF PRAIRIE VILLAGE
PUBLIC WORKS DEPARTMENT**


CURB DETAILS

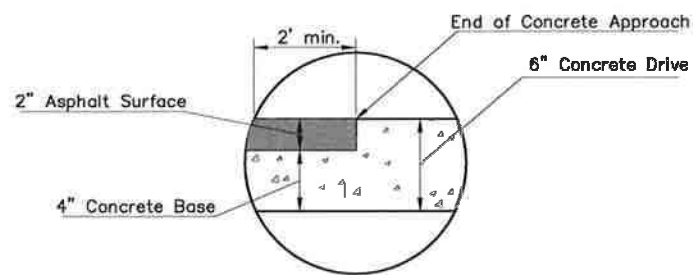
STANDARD DETAIL NUMBER: 103.01



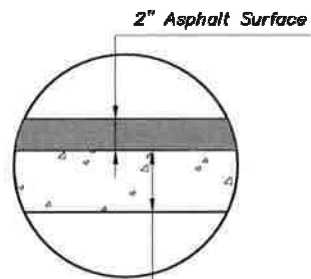
GENERAL NOTES:

1. Location of Access Curb may vary, and shall be field determined.
2. Also See Curb Details.
3. If Island has existing sidewalk that is level with ground surface, no Access Curb shall be required.

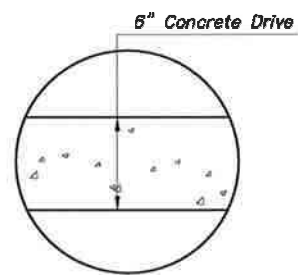
DATE	Z:\STANDARD\PV\PV-MOWERCURB.DWG	REVISIONS
CITY OF PRAIRIE VILLAGE PUBLIC WORKS DEPARTMENT		
	MOWER ACCESS CURB DETAIL	
STANDARD DETAIL NUMBER: 103.02		



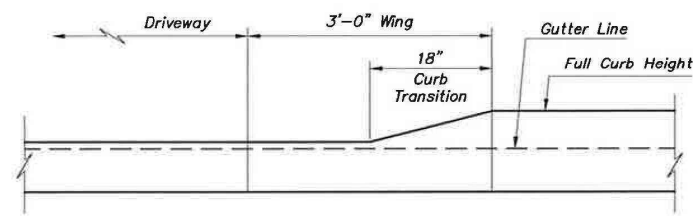
ASPHALT DRIVE W/CONCRETE APPROACH DETAIL



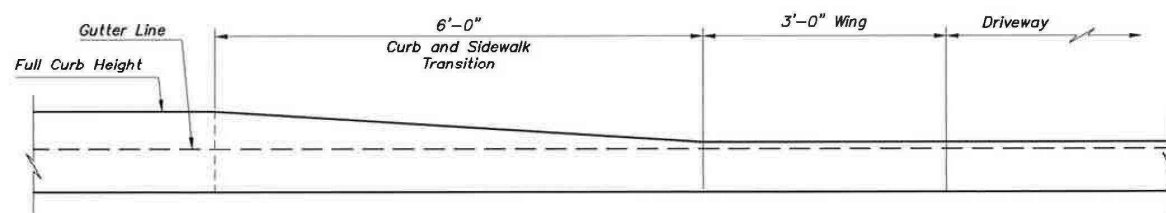
ASPHALT DRIVE DETAIL
4" Concrete Base
(Formed & Jointed
w/ Rough Surface)



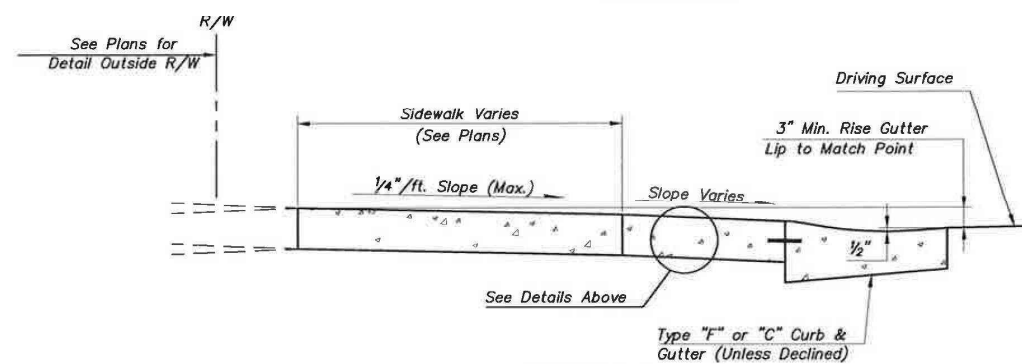
CONCRETE DRIVE DETAIL



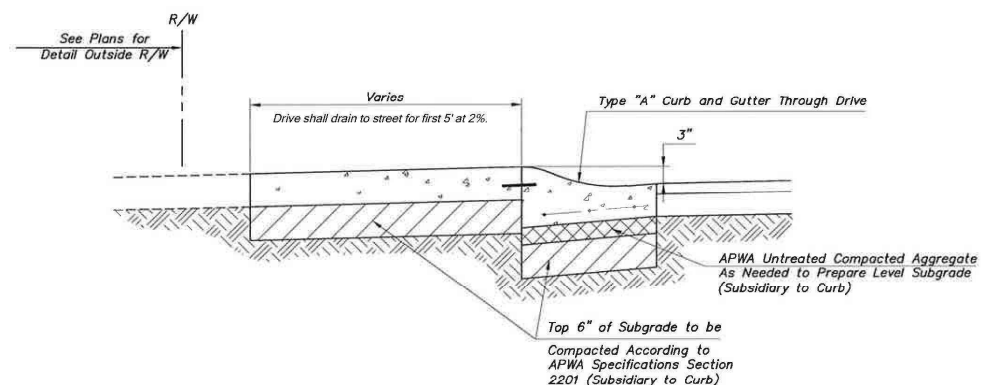
SECTION C-C



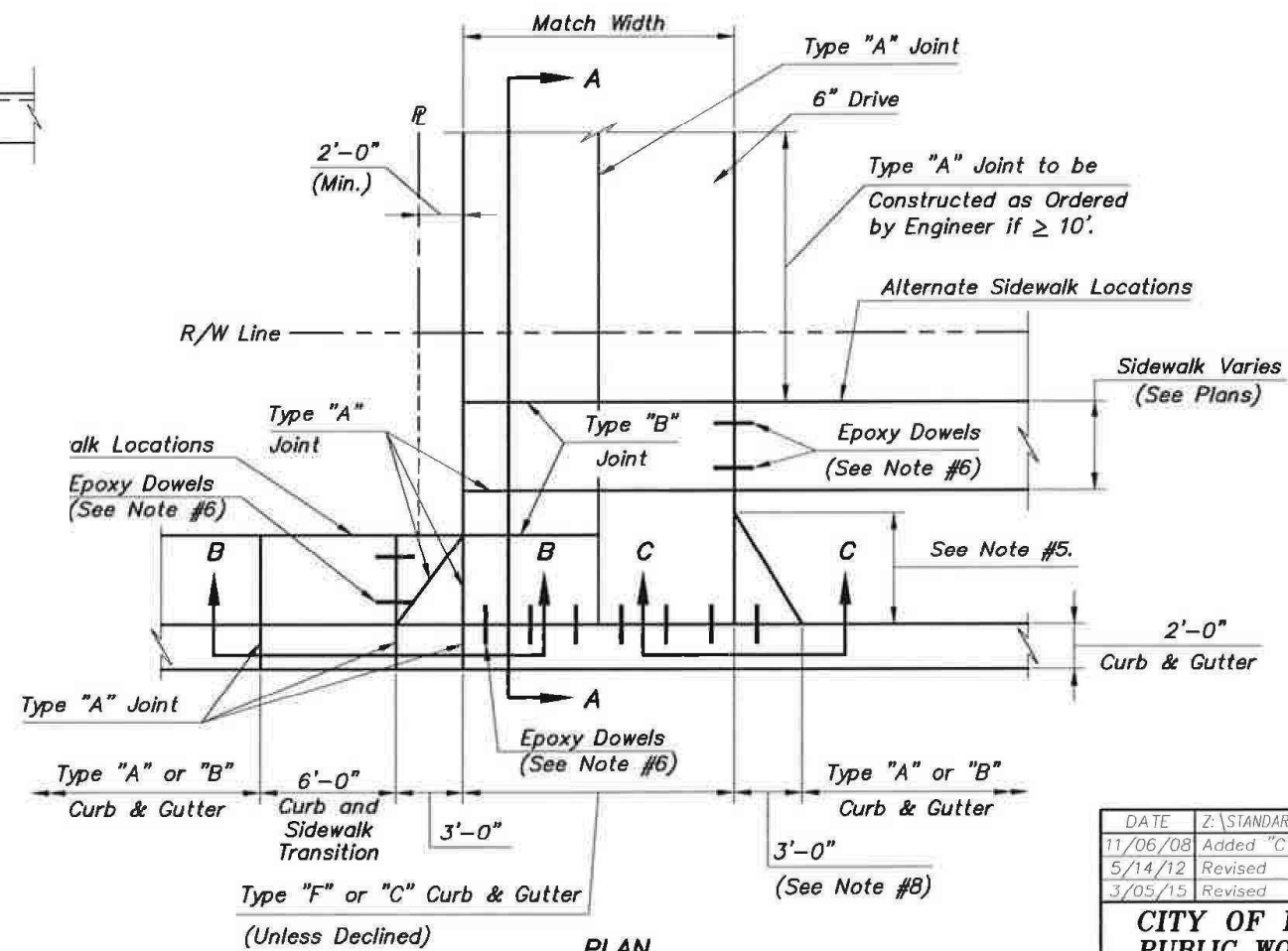
SECTION B-B



SECTION A-A



SECTION VIEW
DECLINED DRIVE



PLAN

RESIDENTIAL DRIVEWAY

DRIVEWAY NOTES:

1. Driveways are to be 6" KCMME 4K concrete. All sidewalk through drives shall be placed 6" deep and paid as 6" driveway. Sidewalks within City right-of-way must be constructed with concrete only. No coloring or stamping is permitted. Driveways within the City right-of-way may be constructed with material other than concrete only if a driveway agreement is obtained from Public Works and signed by all owners of the property.
2. All joints shall be at right angles to the alignment of the curbing and sidewalk unless otherwise noted.
3. The concrete surfaces of curb and gutter, sidewalk and driveways shall be finished with a float and broomed. All flatwork edges shall be finished with a smooth edging tool to give "picture frame" appearance. Sidewalk through a driveway shall be broomed as sidewalk, not driveway.
4. 3 - #4x2' smooth epoxy coated dowels with 1/2" expansion to be placed where new curb matches existing curb.
5. If the offset dimension from the back of curb to sidewalk is less than 5', the width of the wing shall be 3' and the length shall equal the offset dimension. Use type "A" joint as shown. If the offset dimension is greater than or equal to 5', construct driveway with 3'x5' wings with Type "A" joint as shown.
6. Dowels shall be Epoxy coated #4 Bars, 6" Long @ 2' O.C. embedded 3" into curb.
7. See Concrete Joint Details Standard Plan Sheet (107.01) for details of Type "A" and Type "B" joints.
8. Curb Transition - Transition from full curb height to gutter elevation shall take place over 18", unless sidewalk is at back of curb (Section B-B).

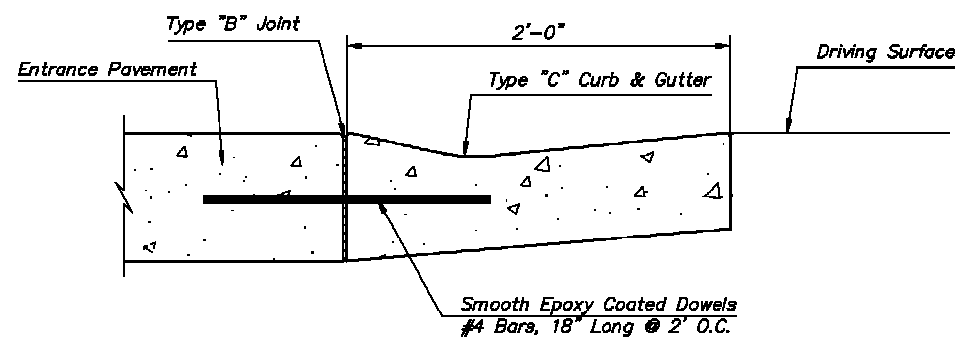
DATE	Z:\STANDARD\PV\PV-RESDRV.DWG	REVISIONS
11/06/08	Added "C" Curb & Gutter Call off	
5/14/12	Revised	
3/05/15	Revised	

CITY OF PRAIRIE VILLAGE
PUBLIC WORKS DEPARTMENT

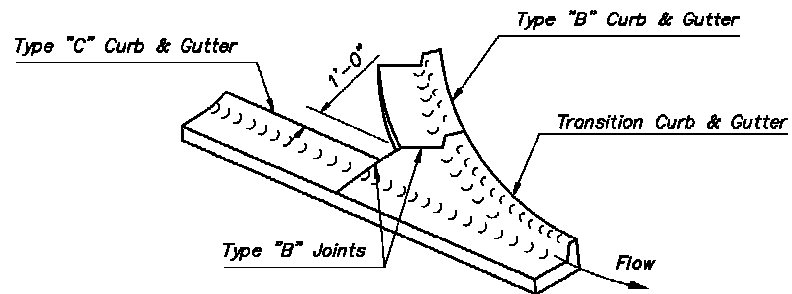


RESIDENTIAL DRIVE DETAIL

STANDARD DETAIL NUMBER: 104.01



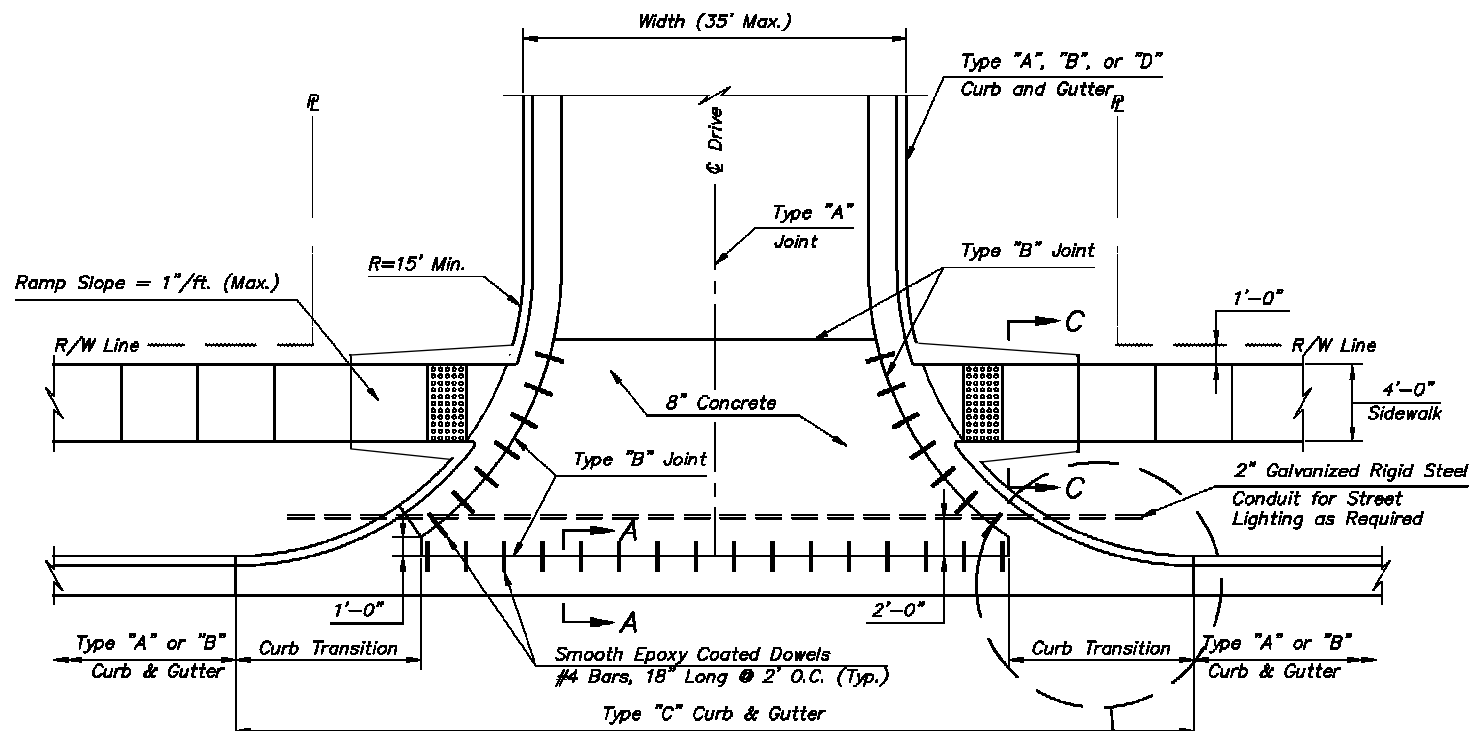
SECTION A-A
Not to Scale



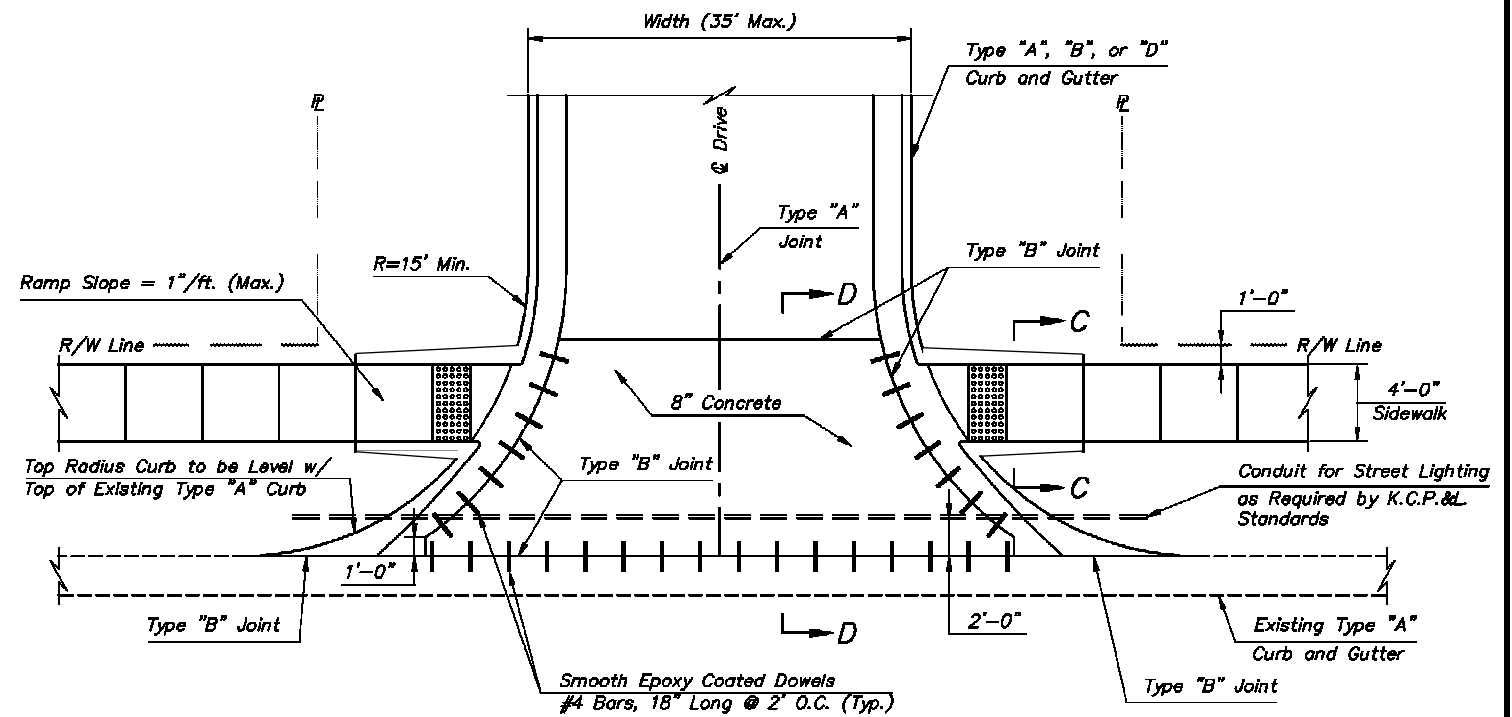
DETAIL B
Not to Scale

NOTES:

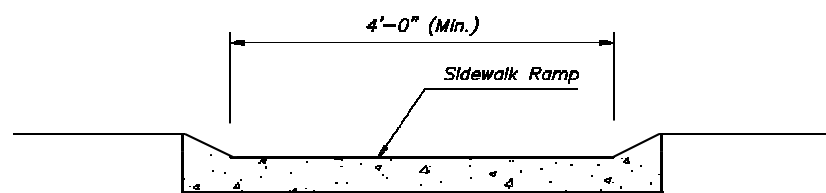
1. New construction must use typical plan. Alternate plan may be used only if existing street curb is Type A. If existing street curb is Type B, curb must be removed between radius points and replaced with transition curb and Type C curb.
2. See Concrete Joint Details Standard Plan Sheet (107.01) for details of Type "A" and Type "B" joints.
3. Driveway shall be no closer than 2' FROM PROPERTY LINE EXTENSION.
4. Where street asphalt is removed to construct curbs, sawcut asphalt to neat lines. Repair with concrete base course and 2" thick asphalt surface.
5. See driveway notes on residential drive detail (104.01).
6. All concrete shall be KCMMB 4K.



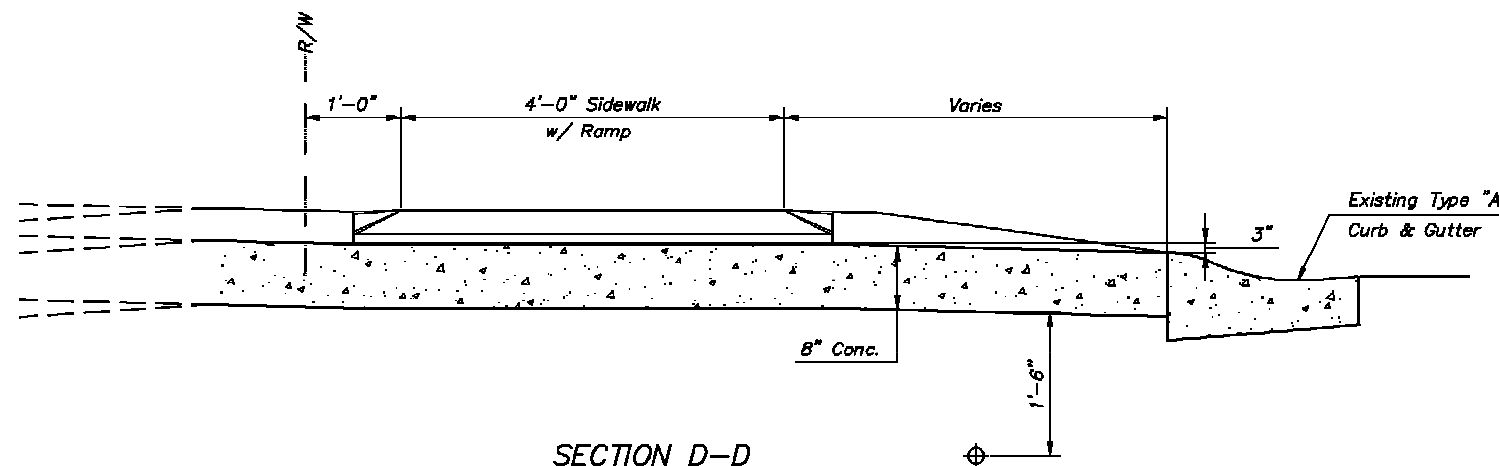
TYPICAL PLAN



ALTERNATE PLAN



SECTION C-C
Not to Scale



SECTION D-D
Not to Scale

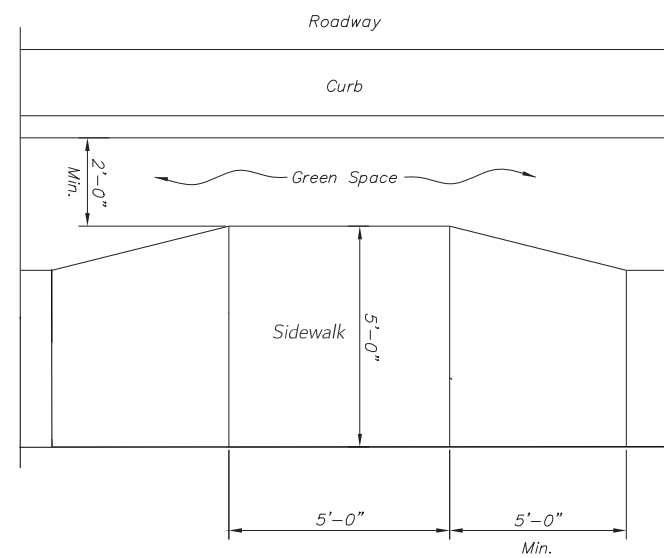
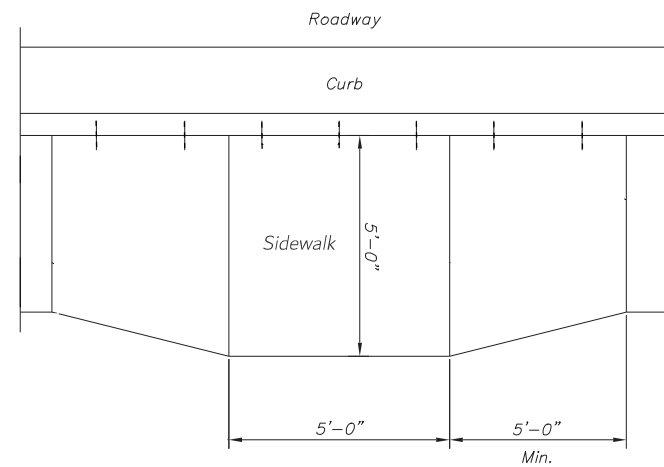
DATE	Z:\STANDARD\VP\VP-CMENT.DWG	REVISIONS
3/3/2022	Commercial ramp sloped to match std detail	

**CITY OF PRAIRIE VILLAGE
PUBLIC WORKS DEPARTMENT**

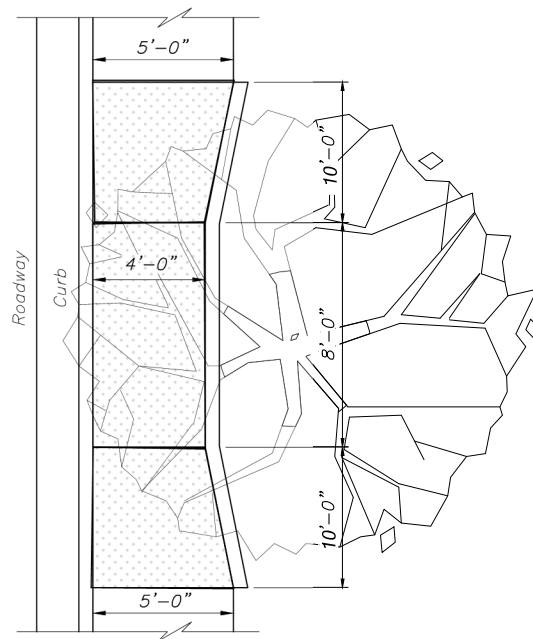


**COMMERCIAL
ENTRANCE DETAIL**

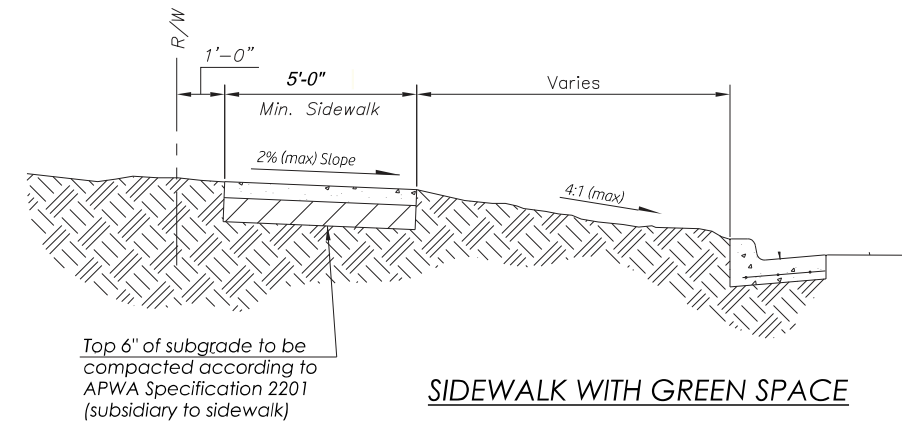
STANDARD DETAIL NUMBER: **105.01**



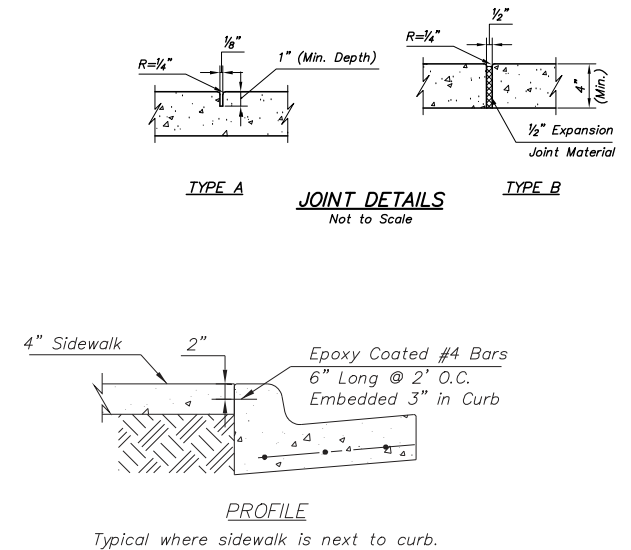
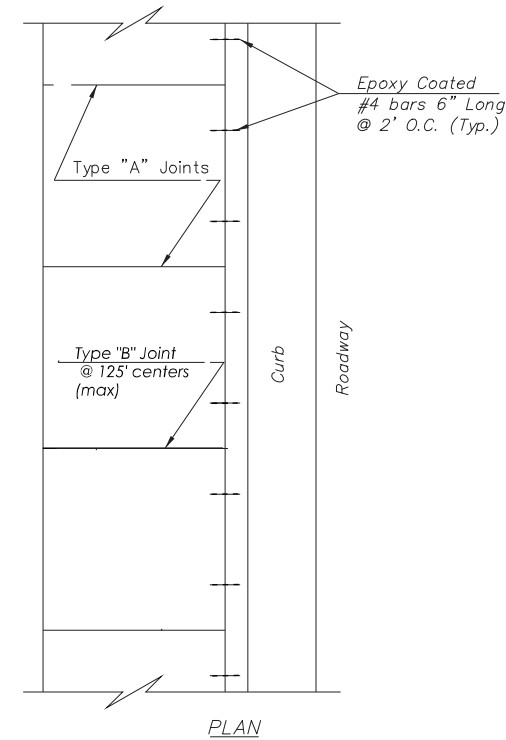
DETAIL SIDEWALK PASSING SPACE
Where sidewalk is less than 5' wide, passing space is required every 200 feet (minimum).



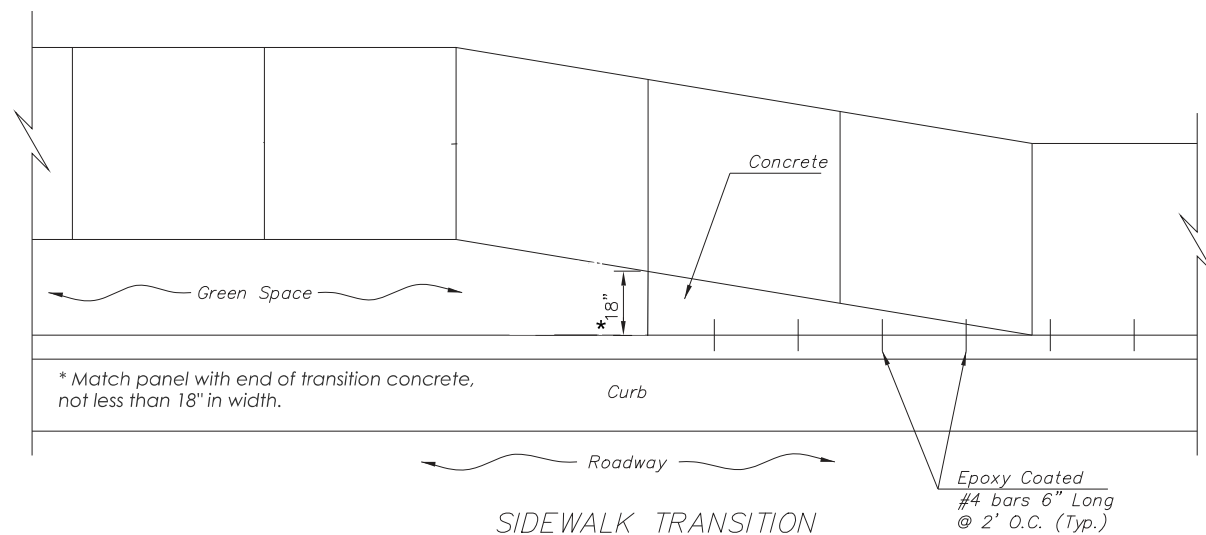
DETAIL SIDEWALK ADJACENT TO TREE



SIDEWALK WITH GREEN SPACE



CURB ADJACENT TO SIDEWALK DETAIL



SIDEWALK TRANSITION

NOTES:

1. Joint spacing (center to center) shall generally match width of sidewalk (4'-0" on 4' sidewalk, 5'-0" on 5' sidewalk).
2. Type "B" Joints where walk abuts junction of manholes, poles, and other similar structures.
3. Type "B" Joint at 125' centers maximum throughout sidewalk placement.
4. Type "A" Joint is Contraction Joint. Type "B" Joint is Isolation Joint. Both shown on this sheet.
5. All sidewalks shall be min. 4" in depth and constructed of KCMMB 4K Concrete. No substitutes such as colored concrete, asphalt, brick, or stone may be made for the KCMMB concrete.
6. The concrete surface of sidewalk shall be finish with a float and broomed. All edges shall be finish with a smooth edging tool for a "picture frame" appearance.
7. Per Council Policy 204, all new sidewalk shall be 5'-0" in width (min).

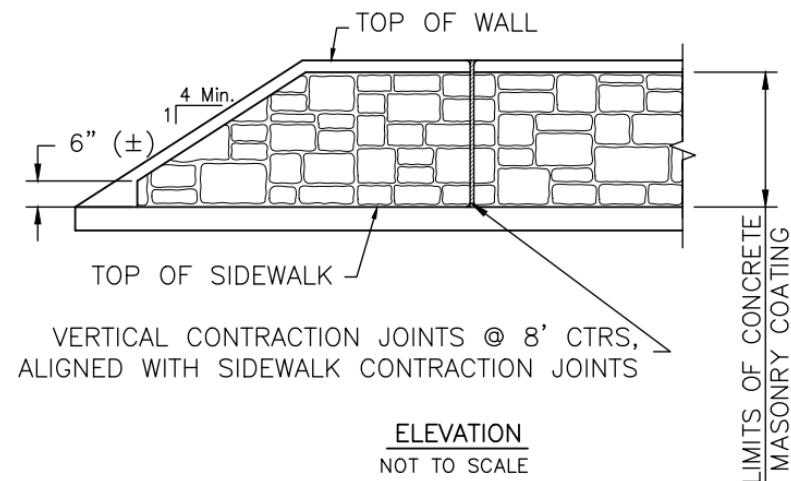
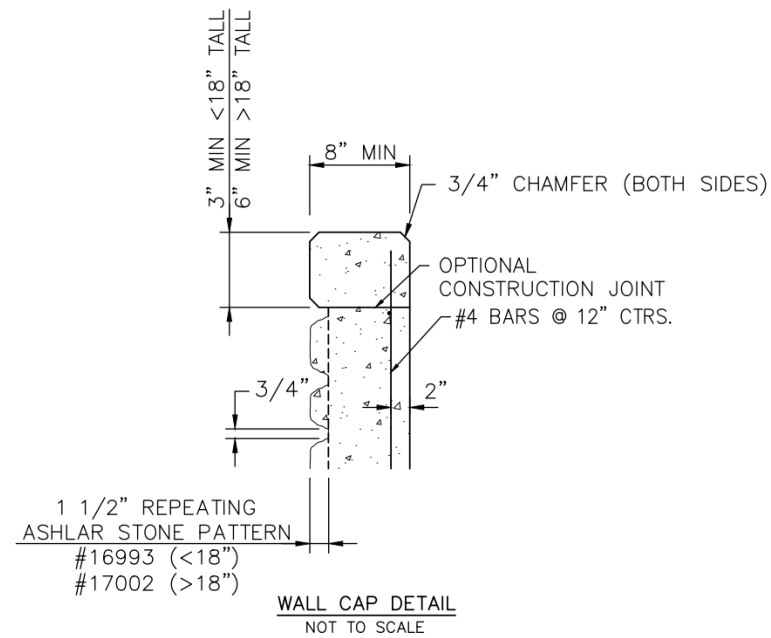
DATE	Z:\STANDARD\PV\PV-SWD.DWG	REVISIONS
2-14-19	Add note #7	

**CITY OF PRAIRIE VILLAGE
PUBLIC WORKS DEPARTMENT**

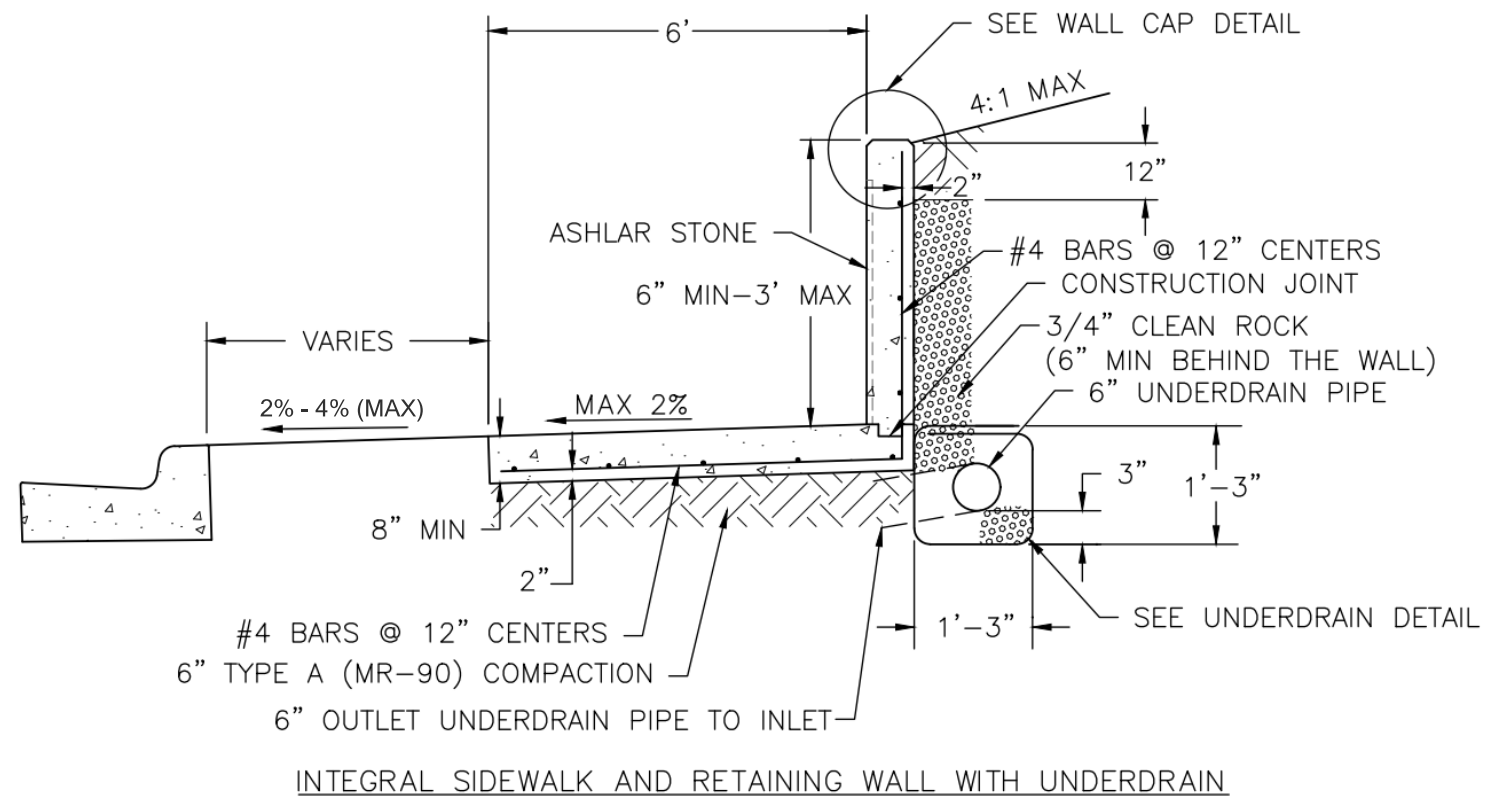
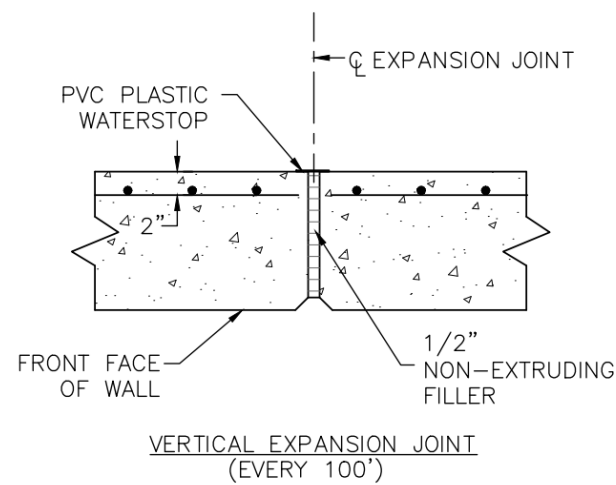
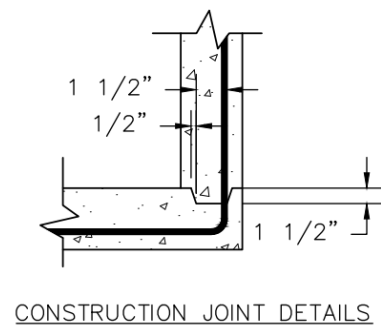



SIDEWALK DETAILS

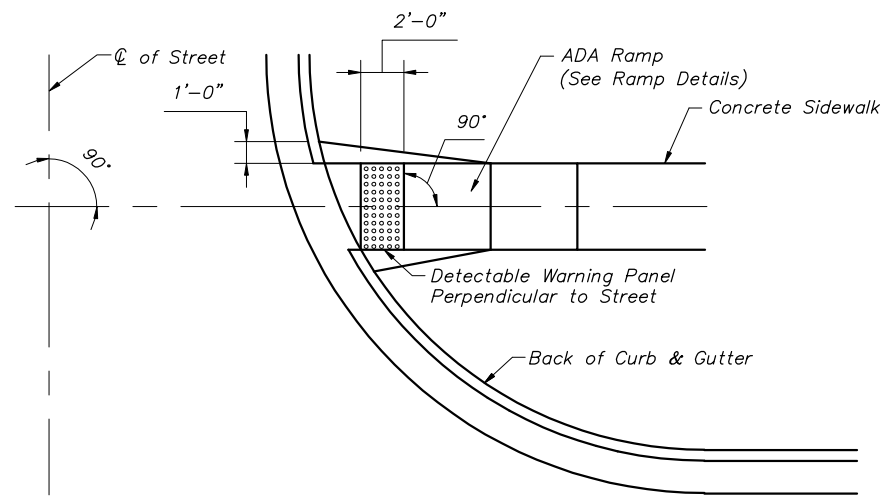
STANDARD DETAIL NUMBER: 106.01



- NOTES**
1. USE KCMMB APPROVED CONCRETE THROUGHOUT.
 2. ALL VERTICAL FORM EXPANSION AND CONTRACTION JOINTS SHALL ALIGN WITH CONTRACTION JOINTS IN SIDEWALK. VERTICAL FORM EXPANSION JOINTS SHALL HAVE A MAXIMUM SPACING OF 100'.
 3. RETAINING WALL CONSTRUCTION JOINT SPACING SHALL ALIGN WITH A SIDEWALK JOINT.
 4. KEY ALL CONSTRUCTION JOINTS.
 5. ALL EXPOSED WALL FACES SHALL BE HAND FINISHED WITH AN APPROVED GROUT WHILE THE WALL IS GREEN. FORM MARKS SHALL BE REMOVED PRIOR TO FINISHING THE WALL.
 6. FORMS SHALL BE BRACED. FORM TIES SHALL NOT BE ALLOWED.
 7. SIDEWALK AND RETAINING WALL EXPANSION JOINTS SHALL HAVE 5/8" SMOOTH DOWEL ASSEMBLIES WITH GREASED CAPS AT 12" CENTERS MAX.
 8. ROCK BACKFILL AND TOPSOIL PLACEMENT SHALL BE CONSIDERED SUBSIDIARY TO INTEGRAL SIDEWALK AND RETAINING WALL CONSTRUCTION.
 9. REINFORCING STEEL SHALL BE NEW BILLET, MINIMUM GRADE 40 AS PER ASTM A615, AND SHALL BE BENT COLD.
 10. ALL DIMENSIONS RELATIVE TO REINFORCING STEEL ARE TO CENTERLINE OF BARS. 2" CLEARANCE SHALL BE PROVIDED THROUGHOUT UNLESS OTHERWISE NOTED. TOLERANCES OF +/- 1/8" SHALL BE PERMITTED.
 11. ALL LAP SPLICES NOT SHOWN SHALL BE A MINIMUM OF 40 BAR DIAMETERS IN LENGTH.
 12. ALL CONCRETE CONSTRUCTION SHALL MEET THE APPLICABLE REQUIREMENTS OF STANDARD SPECIFICATIONS FOR STATE ROAD AND BRIDGE CONSTRUCTION, KANSAS DEPARTMENT OF TRANSPORTATION, LATEST EDITION, AND SPECIAL PROVISIONS.
 13. ALL DOWELS SHALL BE ACCURATELY PLACED AND SECURELY TIED IN PLACE PRIOR TO PLACEMENT OF BOTTOM SLAB CONCRETE. STICKING OF DOWELS INTO FRESH OR PARTIALLY HARDENED CONCRETE WILL NOT BE ACCEPTABLE.
 14. ALL REINFORCING STEEL SHALL BE SUPPORTED ON FABRICATED STEEL BAR SUPPORTS AT 3' MAXIMUM SPACING.
 15. DO NOT SCALE THESE DRAWING FOR DIMENSIONS OR CLEARANCES. ANY QUESTIONS REGARDING DIMENSIONS SHALL BE BROUGHT TO THE ATTENTION OF THE CITY ENGINEER PRIOR TO CONSTRUCTION.
 16. IF USING AN UNDERDRAIN, IT MUST CONNECT TO STORM SEWER SYSTEM.
 17. PROPOSED UNDERDRAIN PIPE LAYOUT, FLOWLINE ELEVATIONS, INLET CONSTRUCTION POINTS, AND DETAILS SHALL BE APPROVED PRIOR TO CONSTRUCTION. THE CONTRACTOR SHALL SUBMIT SHOP DRAWINGS AND MATERIAL TESTS AS REQUIRED FOR APPROVAL BY THE CITY'S ENGINEER.
 18. ALL UNDERDRAIN OUTLET PIPES SHALL HAVE WATERTIGHT JOINTS. ALL OUTLET PIPES SHALL BE TIED TO THE NEAREST STORM SEWER INLET AS APPROVED.
 19. ALL UNDERDRAIN PIPES SHALL BE INSTALLED AT A MINIMUM SLOPE OF 1%.
 20. ALL FILTER FABRIC USED FOR PIPE UNDERDRAIN CONSTRUCTION SHALL MEET THE REQUIREMENTS OF AASHTO M288 CLASS A OR APPROVED EQUAL.

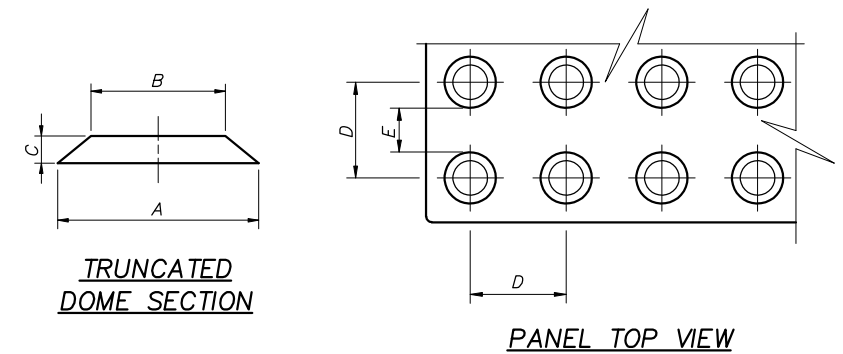


DATE	Z:\STANDARD\PV\PV-RETSWD.DWG	REVISIONS
CITY OF PRAIRIE VILLAGE PUBLIC WORKS DEPARTMENT		
 SIDEWALK WITH RETAINING WALL DETAILS		
STANDARD DETAIL NUMBER: 106.02		



**TYPICAL PANEL PLACEMENT
ON CURB RETURN**

ADA TRUNCATED DOME AND SPACING DIMENSIONS			
	Fixed Dimension	Minimum	Maximum
A		0.9" (23 mm)	1.4" (36 mm)
B		50% of A	65% of A
C	0.2" (5 mm)		
D		1.6" (41 mm)	2.4" (61 mm)
E		0.65" (16 mm)	



**DETECTABLE WARNING
PANEL DETAILS**

ADA RAMP GENERAL NOTES:

TYPE	LEGEND	RUNNING SLOPE	CROSS SLOPE	RUNNING LENGTH	WIDTH (PERPENDICULAR TO TRAVEL)
RAMP		1" / Ft. Max. (1:12 Max.)	2% Max.	15' Max.	36" Min. or Width of Existing Sidewalk. Whichever is Greater.
LANDING		2% Max.	2% Max.	48" Min.	48" Min.
TRANSITION		1" / Ft. Max. (1:12 Max.)	2% Max.	Varies	48" Min.
DETECTABLE WARNING PANEL		1" / Ft. Max. (1:12 Max.)	2% Max.	24"	48" Min.

- All Sidewalk Ramp Layouts Shall be Approved by the City Before Construction
- Location of Ramp May Vary and must be Approved in field by City.
- Location of Landing May Vary based on Pedestrian Button location and must be Approved in field by City.
- Gratings, Access Covers, and Other Appurtenances shall not be located on Curb Ramps, Landings, Transitions, and Gutter areas.
- All Landings, Transitions, and Detectable Warning Panel areas shall be Perpendicular to Street Curb.
- See ADA ramp details. All 6" thick areas will be paid as ramp. All 4" thick areas adjacent to ramp requiring curb for grading purposes will be paid as ramp.
- See Detectable Warning Panel Details.
- See Curb Details.

GENERAL NOTES:

COMPOSITION AND MANUFACTURER

- Detectable warning panels shall be
 1) brick red in color
 2) TuTile Cast Iron or approved equal

INSTALLATION

- 1) per manufacturer's recommendation
 2) plates installed radially behind the curb shall be radius plates.

DATE	Z:\STANDARD\PV\PV-WARNING.DWG	REVISIONS
3/4/22		updated approved panel
11/06/08		Revised Street Curb Transition
5/14/12		Revised

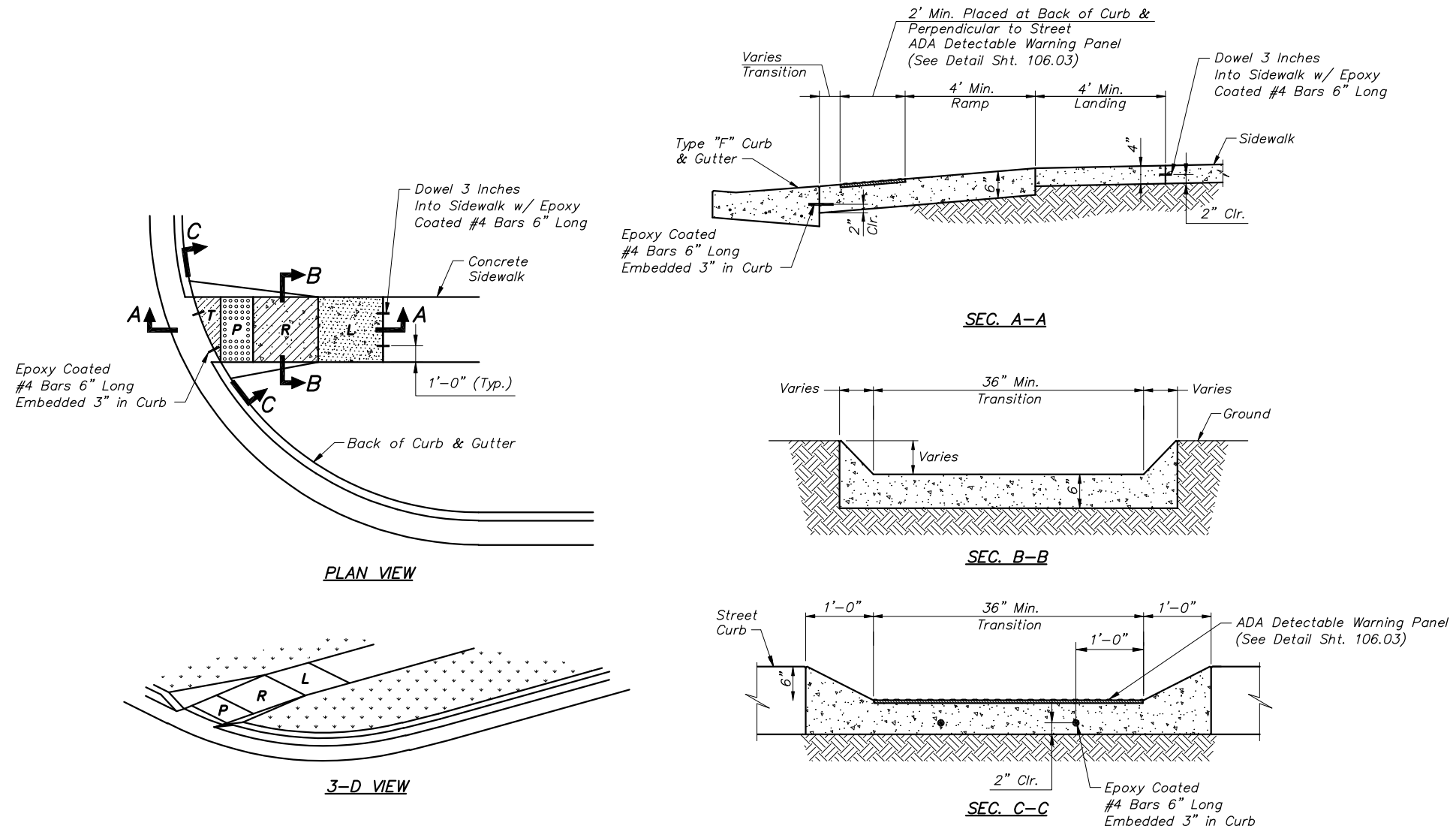
**CITY OF PRAIRIE VILLAGE
PUBLIC WORKS DEPARTMENT**



**DETECTABLE WARNING
PANEL DETAILS**

STANDARD DETAIL NUMBER: 106.03

TYPE 1 SIDEWALK ADA RAMP DETAILS



GENERAL NOTE:
See ADA Ramp General Notes and General Details, Detail Sheet 106.03.

- NOTES:**
- All 6" thick areas will be paid as ramp.
 - 4" thick areas will be paid as sidewalk unless curb is also required adjacent to 4" thick areas. In these cases 4" thick will be paid as ramp.

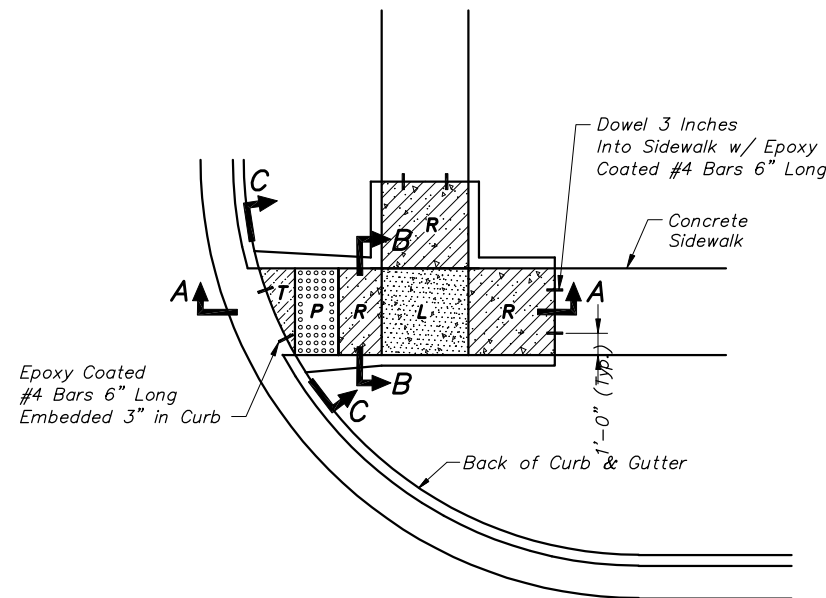
DATE	Z:\STANDARD\PV\PV-WALK-1.DWG	REVISIONS
2/06/06	Revised	
11/06/08	Revised Street Curb Transition	
5/14/12	Revised	

**CITY OF PRAIRIE VILLAGE
PUBLIC WORKS DEPARTMENT**

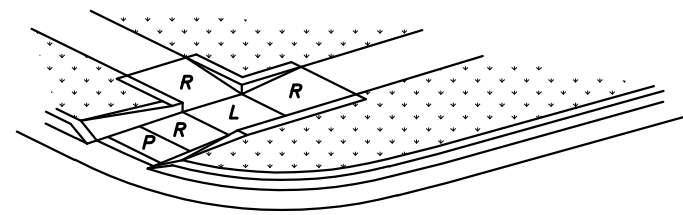
**TYPE 1 SIDEWALK ADA
RAMP DETAILS**

STANDARD DETAIL NUMBER: 106.04

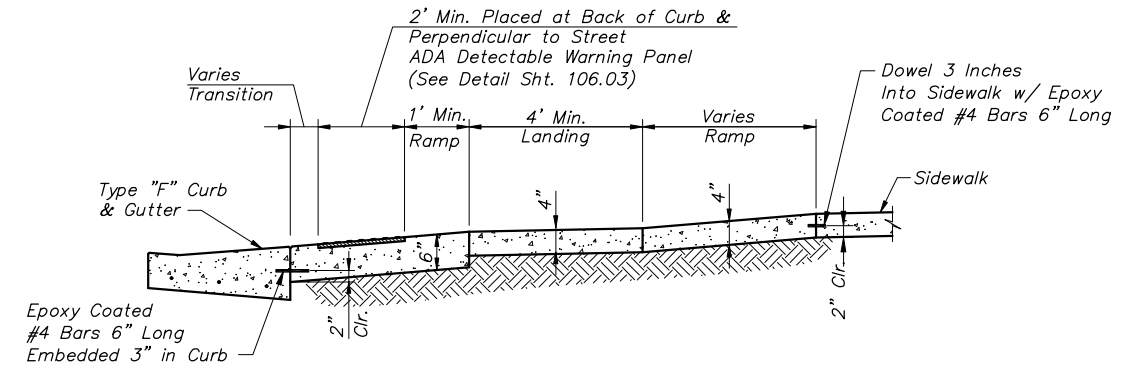
TYPE 2 SIDEWALK ADA RAMP DETAILS



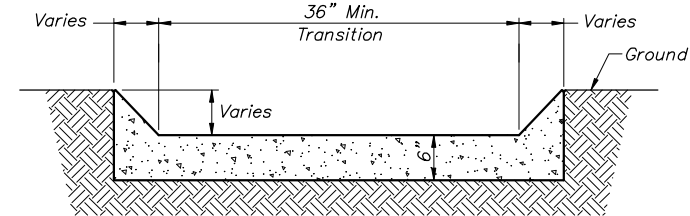
PLAN VIEW



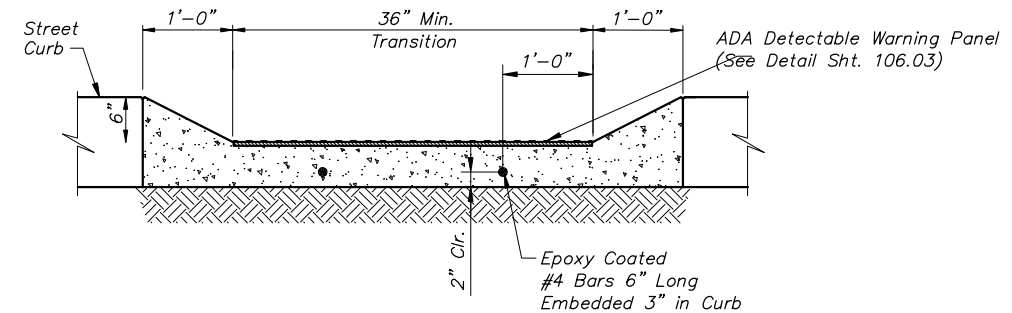
3-D VIEW



SEC. A-A



SEC. B-B



SEC. C-C

GENERAL NOTE:

See ADA Ramp General Notes on General Details, Detail Sheet 106.03.

NOTES:

- All 6" thick areas will be paid as ramp.
- 4" thick areas will be paid as sidewalk unless curb is also required adjacent to 4" thick areas. In these cases 4" thick will be paid as ramp.

DATE	Z:\STANDARD\PV\WALK-2.DWG	REVISIONS
2/03/06	Revised	
11/06/08	Revised Street Curb Transition	
5/14/12	Revised	

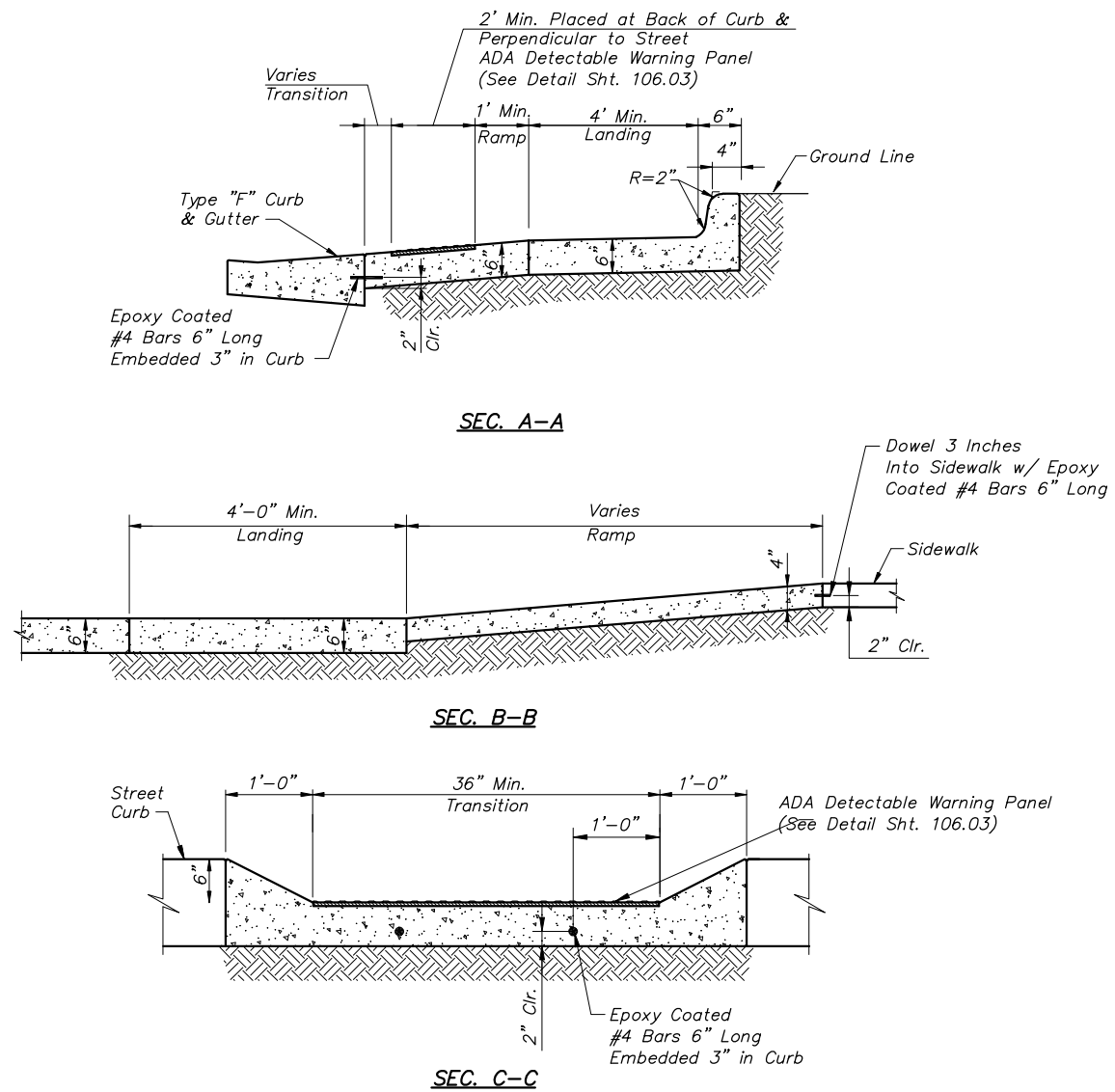
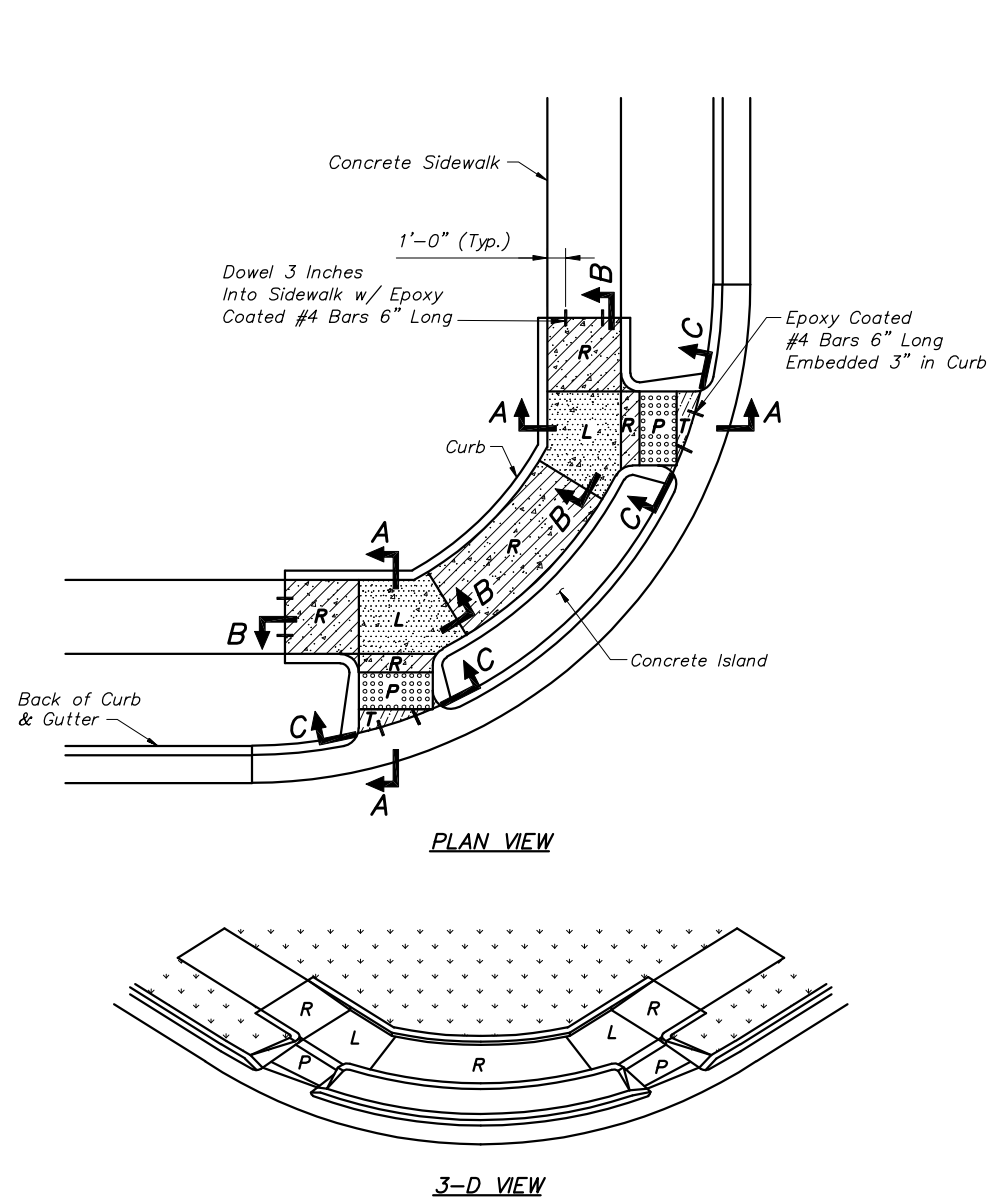
**CITY OF PRAIRIE VILLAGE
PUBLIC WORKS DEPARTMENT**



TYPE 2 SIDEWALK ADA
RAMP DETAILS

STANDARD DETAIL NUMBER: 106.05

TYPE 3 SIDEWALK ADA RAMP DETAILS



GENERAL NOTE:
See ADA Ramp General Notes and General Details, Detail Sheet 106.03.

- NOTES:**
- All 6" thick areas will be paid as ramp.
 - 4" thick areas will be paid as sidewalk unless curb is also required adjacent to 4" thick areas. In these cases 4" thick will be paid as ramp.

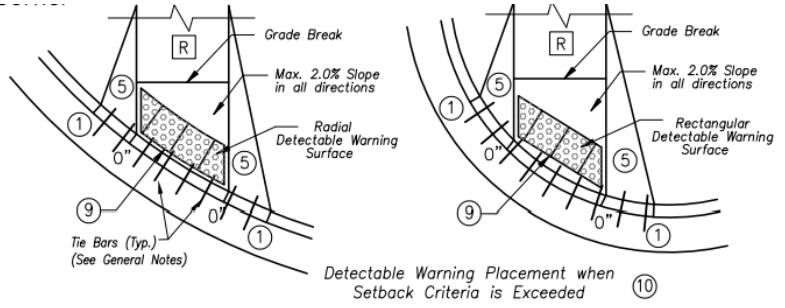
DATE	Z:\STANDARD\PV\PV-WALK-3.DWG	REVISIONS
2/06/06	Revised	
11/06/08	Revised Street Curb Transition	
5/14/12	Revised	

**CITY OF PRAIRIE VILLAGE
PUBLIC WORKS DEPARTMENT**

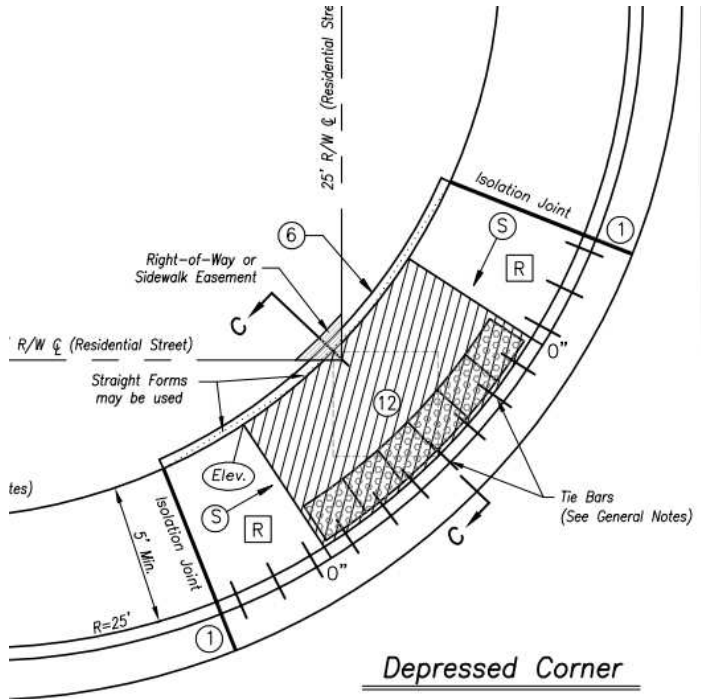
**TYPE 3 SIDEWALK ADA
RAMP DETAILS**

STANDARD DETAIL NUMBER: 106.06

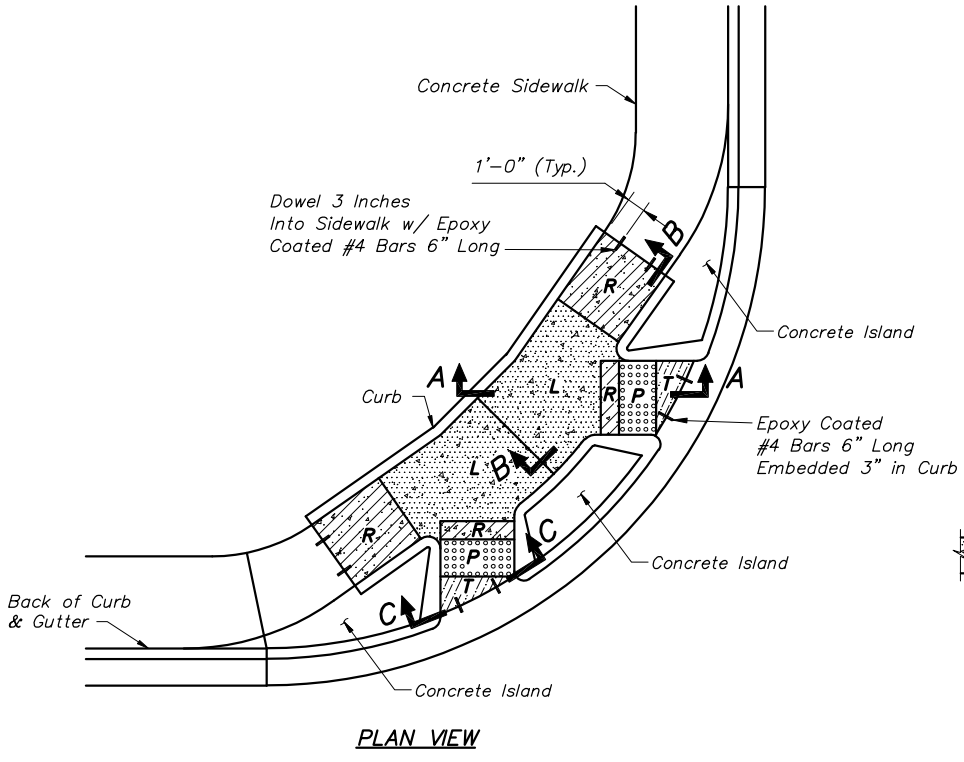
TYPE 4 SIDEWALK ADA RAMP DETAILS



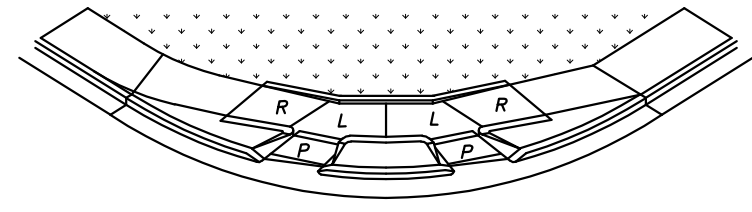
One-Way Directional with Detectable Warning at Back of Curb



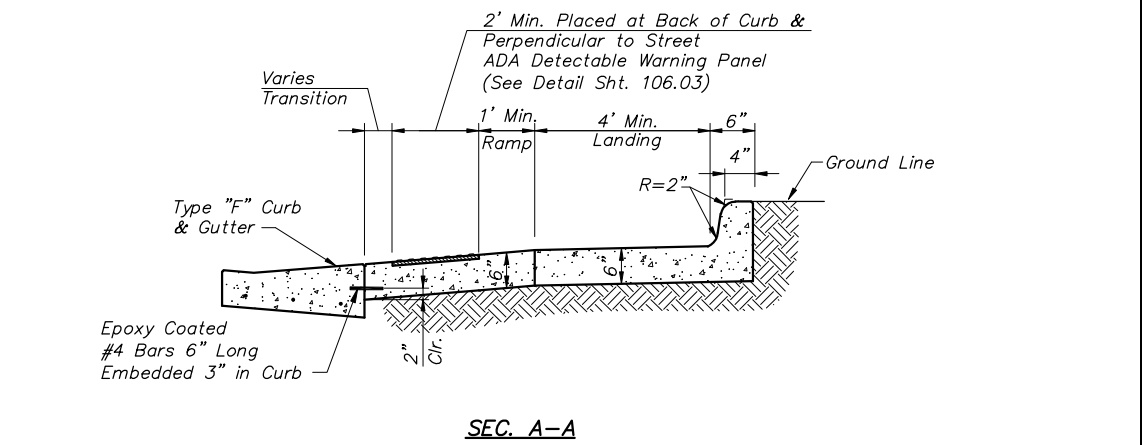
Depressed Corner



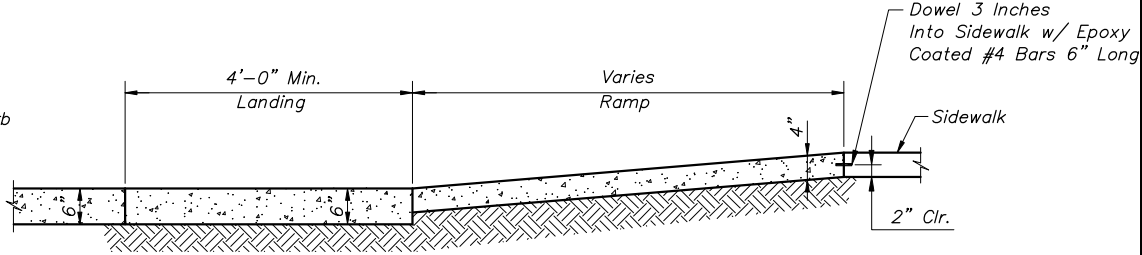
PLAN VIEW



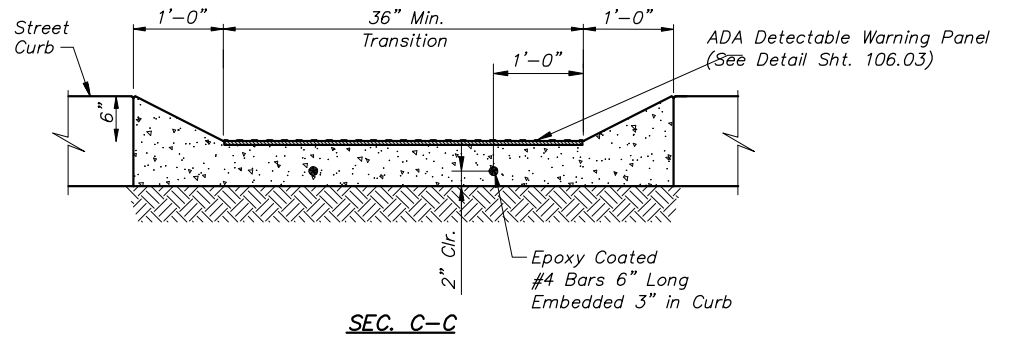
3-D VIEW



SEC. A-A



SEC. B-B



SEC. C-C

GENERAL NOTE:
See ADA Ramp General Notes on General Details, Detail Sheet 106.03.

- NOTES:**
- All 6" thick areas will be paid as ramp.
 - 4" thick areas will be paid as sidewalk unless curb is also required adjacent to 4" thick areas. In these cases 4" thick will be paid as ramp.

WHEN RIGHT OF WAY CONSTRAINTS DO NOT ALLOW FOR RAMP PLACEMENT AS SHOWN IN PV STANDARD DETAILS, ALTERNATES MAY BE USED AS APPROVED. ABOVE ARE EXAMPLES FROM THE CITY OF OVERLAND PARKS STANDARD DETAILS. ANY USE OF THESE RAMPS SHALL BE CONSTRUCTED TO THE STANDARDS OUTLINED IN THE CITY OF OVERLAND PARK STANDARD DETAIL SHEET FOR RAMPS. THESE ARE SHOWN FOR INFORMATION ONLY.

DATE	REVISIONS
2/06/06	Revised
11/06/08	Revised Street Curb Transition
5/14/12	Revised

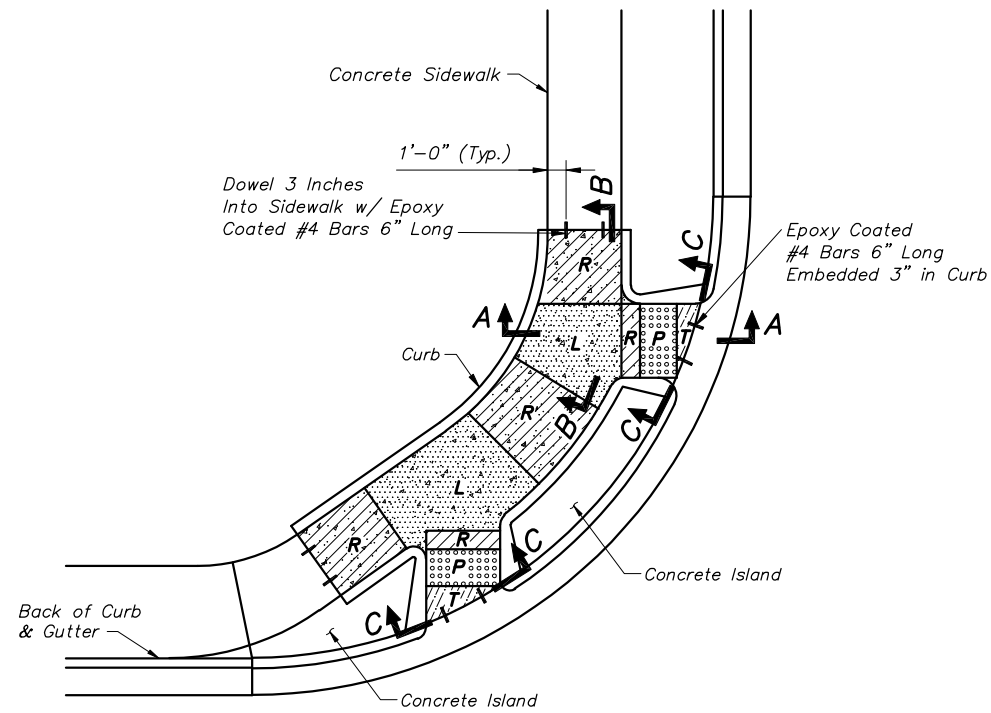
CITY OF PRAIRIE VILLAGE PUBLIC WORKS DEPARTMENT



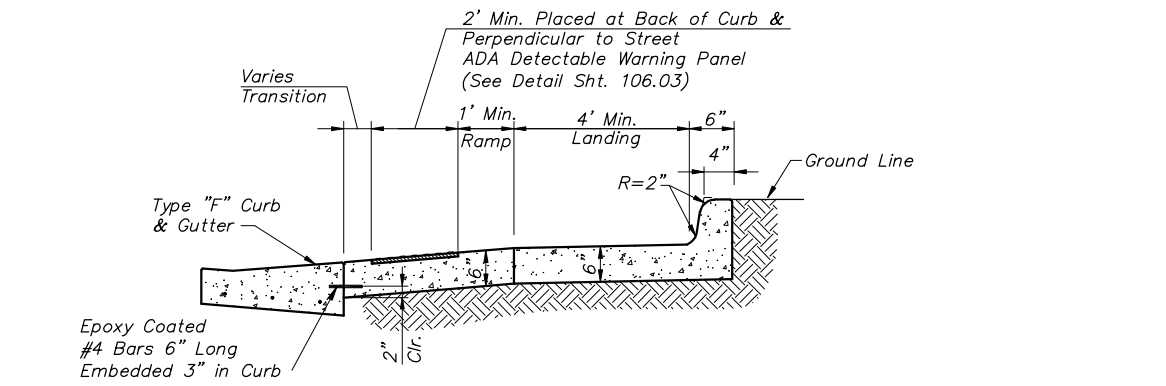
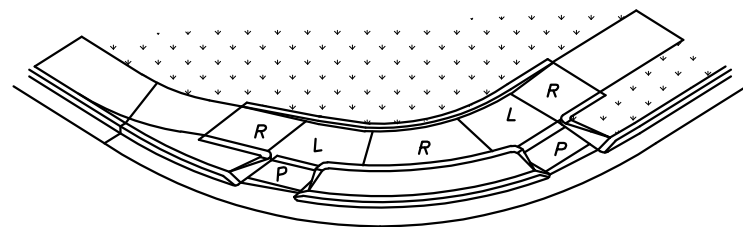
TYPE 4 SIDEWALK ADA RAMP DETAILS

STANDARD DETAIL NUMBER: 106.07

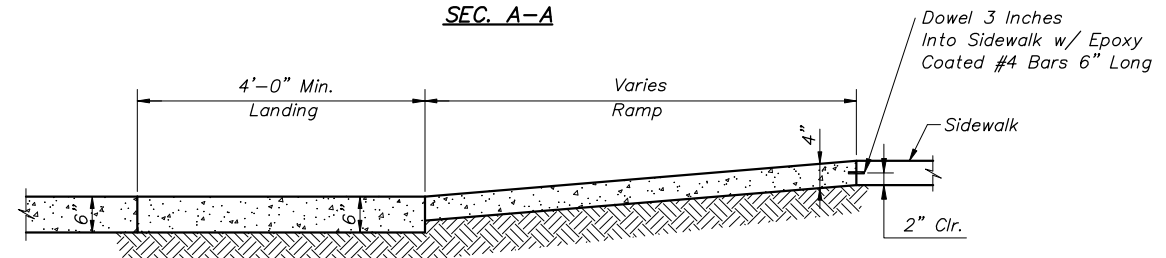
TYPE 5 SIDEWALK ADA RAMP DETAILS



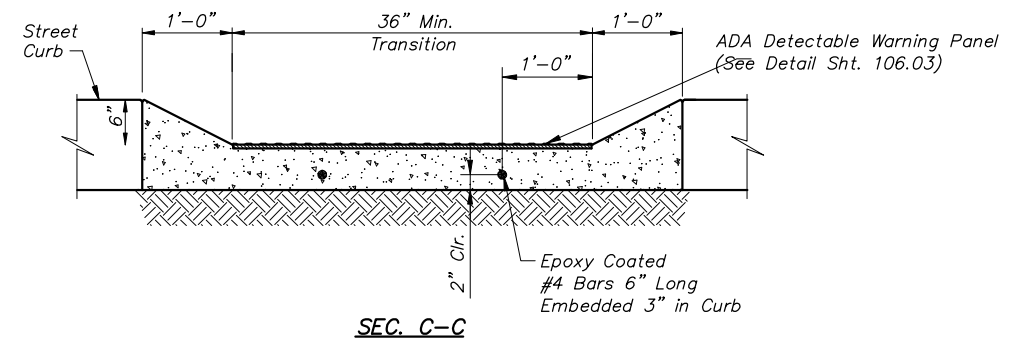
PLAN VIEW



SEC. A-A



SEC. B-B



SEC. C-C

GENERAL NOTE:

See ADA Ramp General Notes on General Details, Detail Sheet 106.03.

NOTES:

- All 6" thick areas will be paid as ramp.
- 4" thick areas will be paid as sidewalk unless curb is also required adjacent to 4" thick areas. In these cases 4" thick will be paid as ramp.

DATE	Z:\STANDARD\PV\WALK-5.DWG	REVISIONS
2/06/06	Revised	
11/06/08	Revised Street Curb Transition	
5/14/12	Revised	

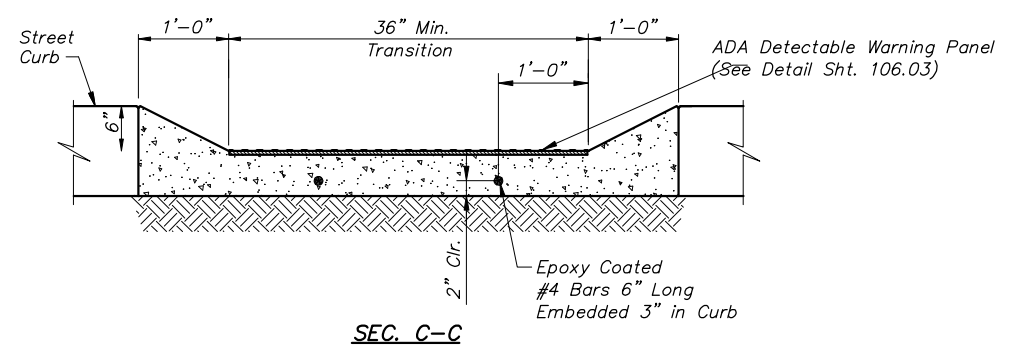
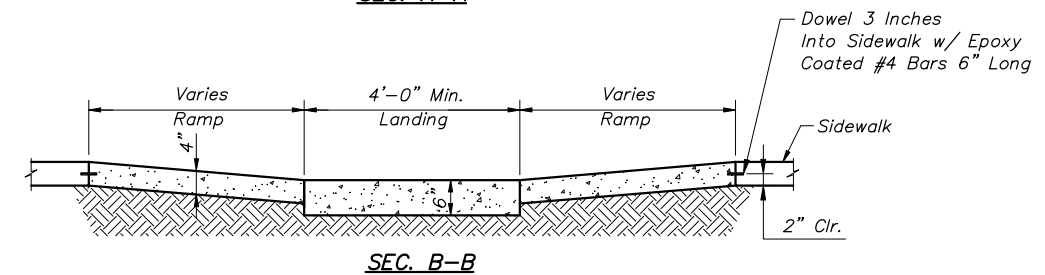
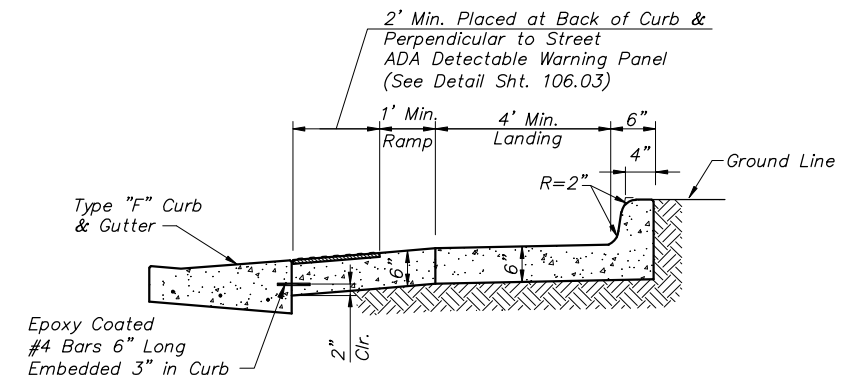
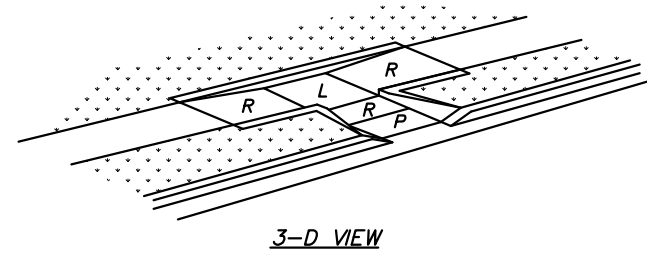
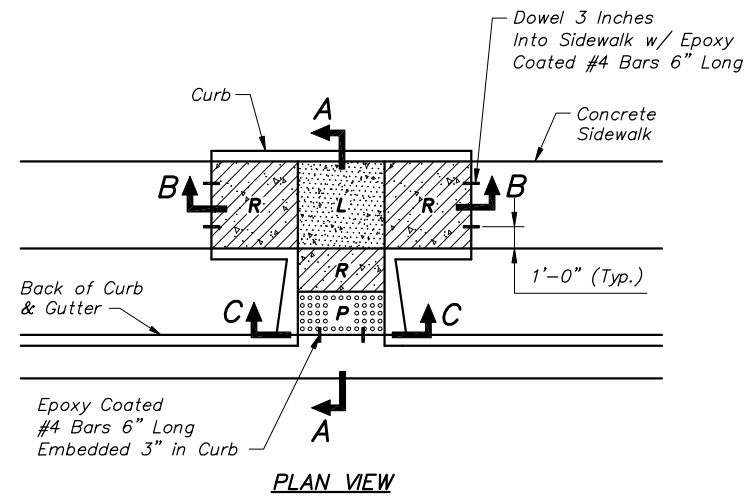
**CITY OF PRAIRIE VILLAGE
PUBLIC WORKS DEPARTMENT**



**TYPE 5 SIDEWALK ADA
RAMP DETAILS**

STANDARD DETAIL NUMBER: 106.08

TYPE 6 SIDEWALK ADA RAMP DETAILS



GENERAL NOTE:
See ADA Ramp General Notes on General Details, Detail Sheet 106.03.

- NOTES:**
- All 6" thick areas will be paid as ramp.
 - 4" thick areas will be paid as sidewalk unless curb is also required adjacent to 4" thick areas. In these cases 4" thick will be paid as ramp.

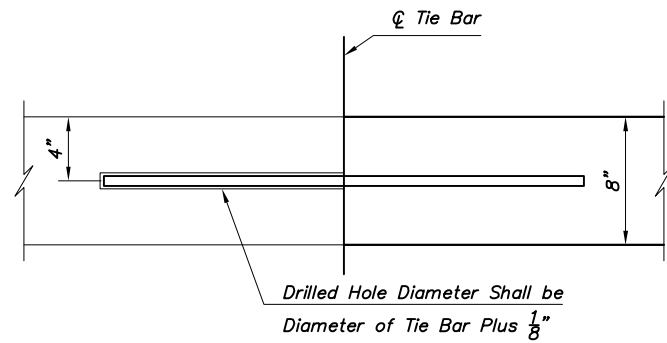
DATE	Z:\STANDARD\PV\WALK-6.DWG	REVISIONS
2/03/06	Revised	
11/08/08	Revised Street Curb Transition	
5/14/12	Revised	

**CITY OF PRAIRIE VILLAGE
PUBLIC WORKS DEPARTMENT**



**TYPE 6 SIDEWALK ADA
RAMP DETAILS**

STANDARD DETAIL NUMBER: **106.09**

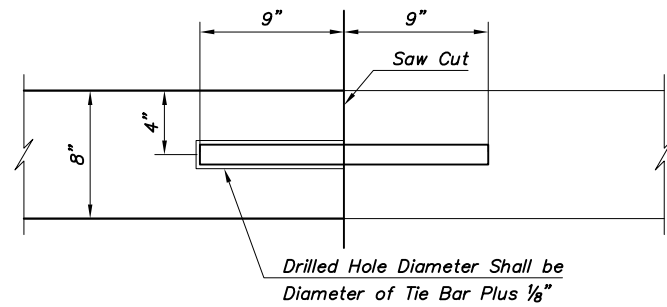


Tie Bars shall be Epoxy Coated, Deformed Reinforcing Bars Meeting the Requirements of the APWA.

Bonding for Tie Bars shall be Epoxy or Polyester Bonding Agents.

Tie Bar Size and Length shall be based on the thickness of the Thinner Pavement or Shoulder to be Tied Together.

LONGITUDINAL CONSTRUCTION JOINT



SAWED SECTION

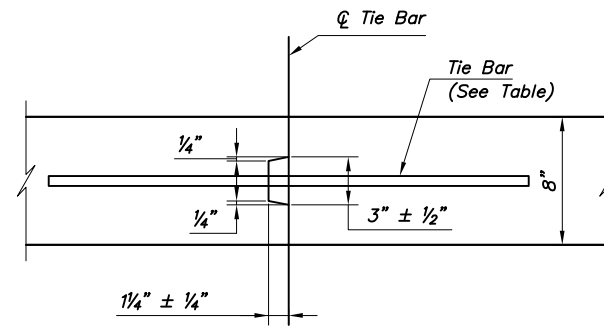
The header board shall be sufficiently rigid to prevent distortion from the typical section and maintain a straight line from pavement edge to pavement edge.

The construction joint may be sawed full depth, holes for dowel bars shall be drilled after the concrete has sufficient set to prevent damage. Dowel bars shall be bonded into the holes.

Bonding for dowel bars shall be epoxy or polyester bonding agents.

The portion of the dowel outside the hole shall be coated with an approved lubricant.

CONSTRUCTION JOINT (C)



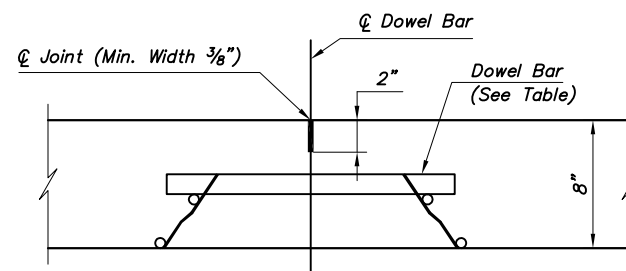
If Metal is Used to Form Key Discontinue Strip for Distance of Approximately 3" Each Side of Transverse Joint.

Type (K) Requires Tie Bar.

Type (M) Constructed without Tie Bars.

(K) and (M) Joints Shall Not Be Sawed.

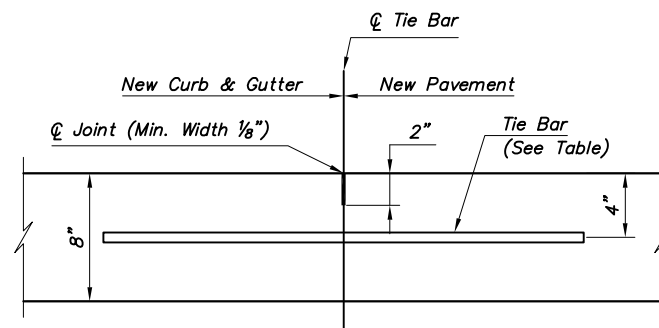
TONGUE AND GROOVE JOINTS (K) AND (M)



Dowels Required. For Permissible Types of Dowels Supporting Units, see other drawings.

(2) Dowel Bars are required for all Pavements having the Same Thickness as the Traveled Way. Transverse Contraction Joints for Concrete Pavement or Base Widening Shall Match Existing Joints.

TRANSVERSE CONTRACTION JOINT (C1) (2)



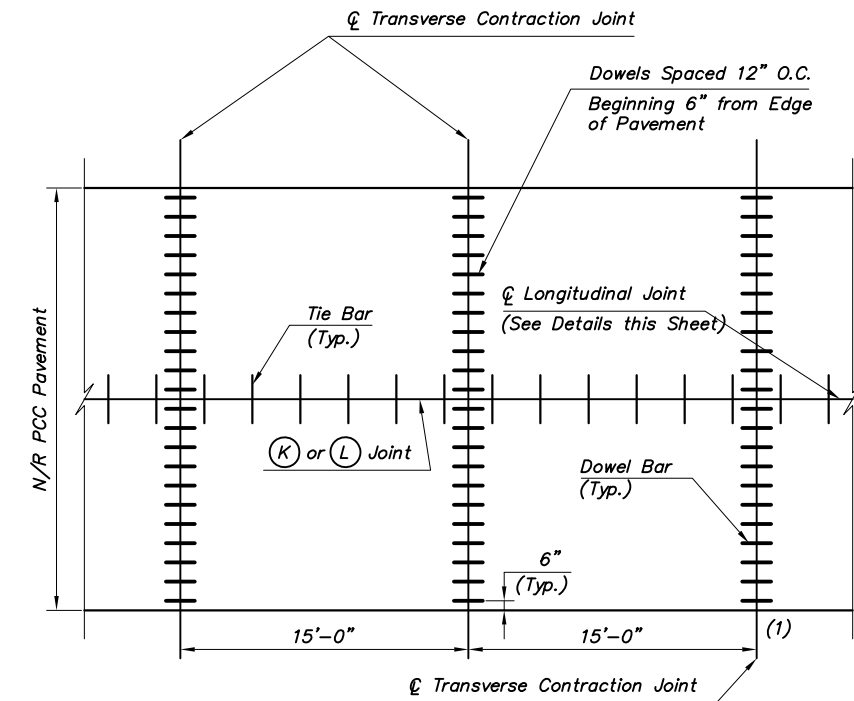
Tie Bars Required.

LONGITUDINAL JOINT (L)

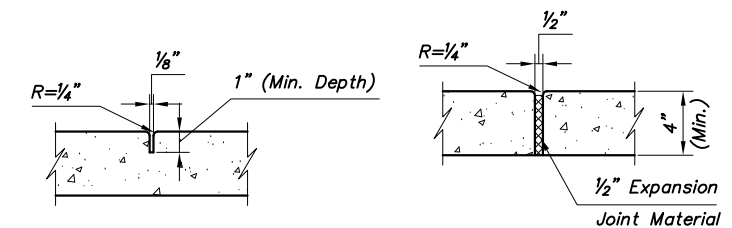
TABLE				
PCCP THICKNESS (P)	DOWEL SIZE	TIE BAR SIZE	DOWEL SPACING	TIE BAR SPACING
10" OR LESS	1"x18"	#5x30"	12" O.C.	30" O.C.
GREATER THAN 10"	1D"x18"	#6x40"	12" O.C.	30" O.C.

GENERAL NOTE:

The final position of all dowels and tie bars shall be perpendicular to the plane of the joint and parallel to the surface of the pavement and parallel to each other.



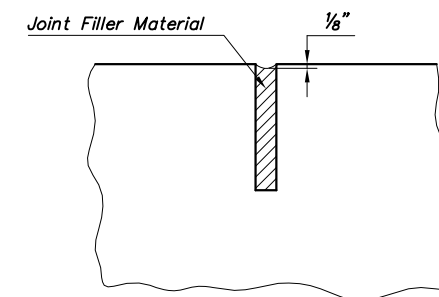
JOINT PLAN AND SPACING FOR CONTRACTION JOINTS



TYPE A

JOINT DETAILS
Not to Scale

TYPE B



JOINT FILLER DETAIL

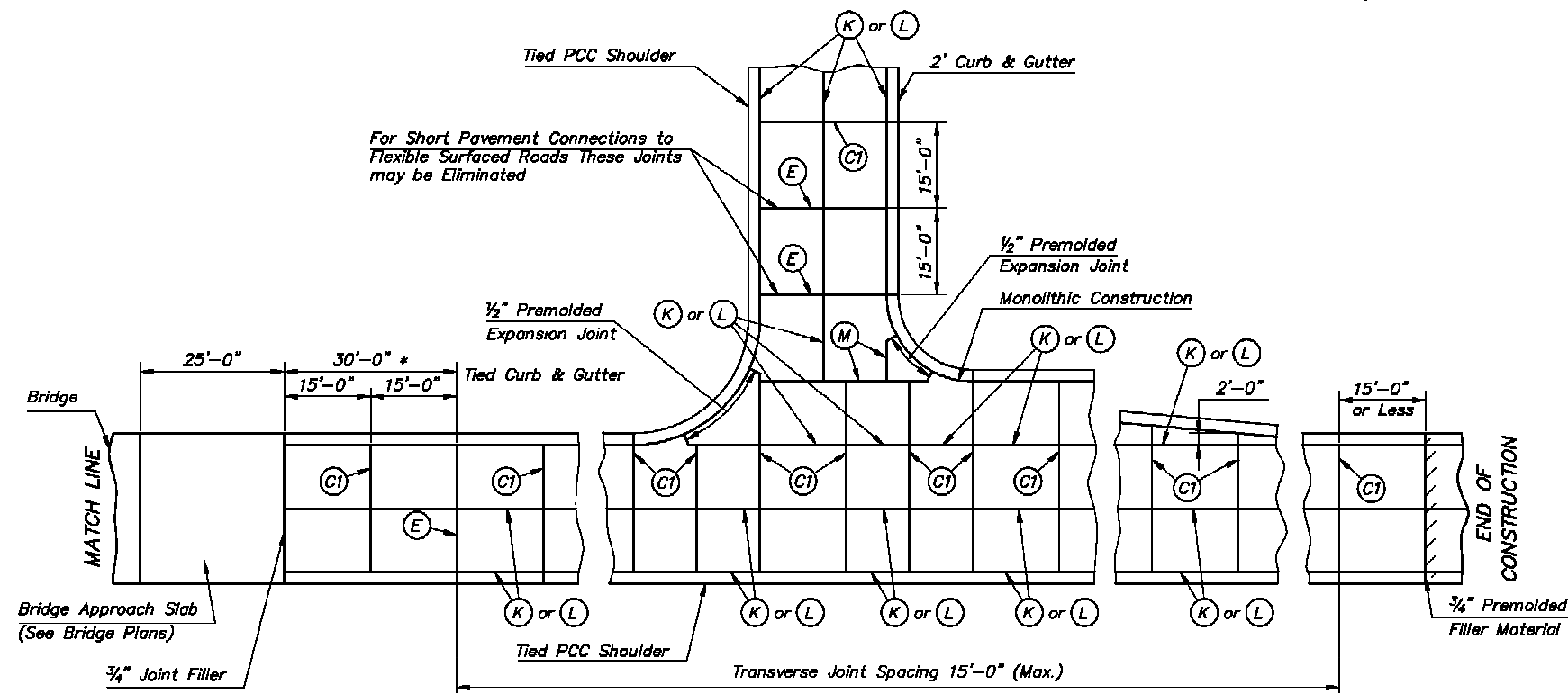
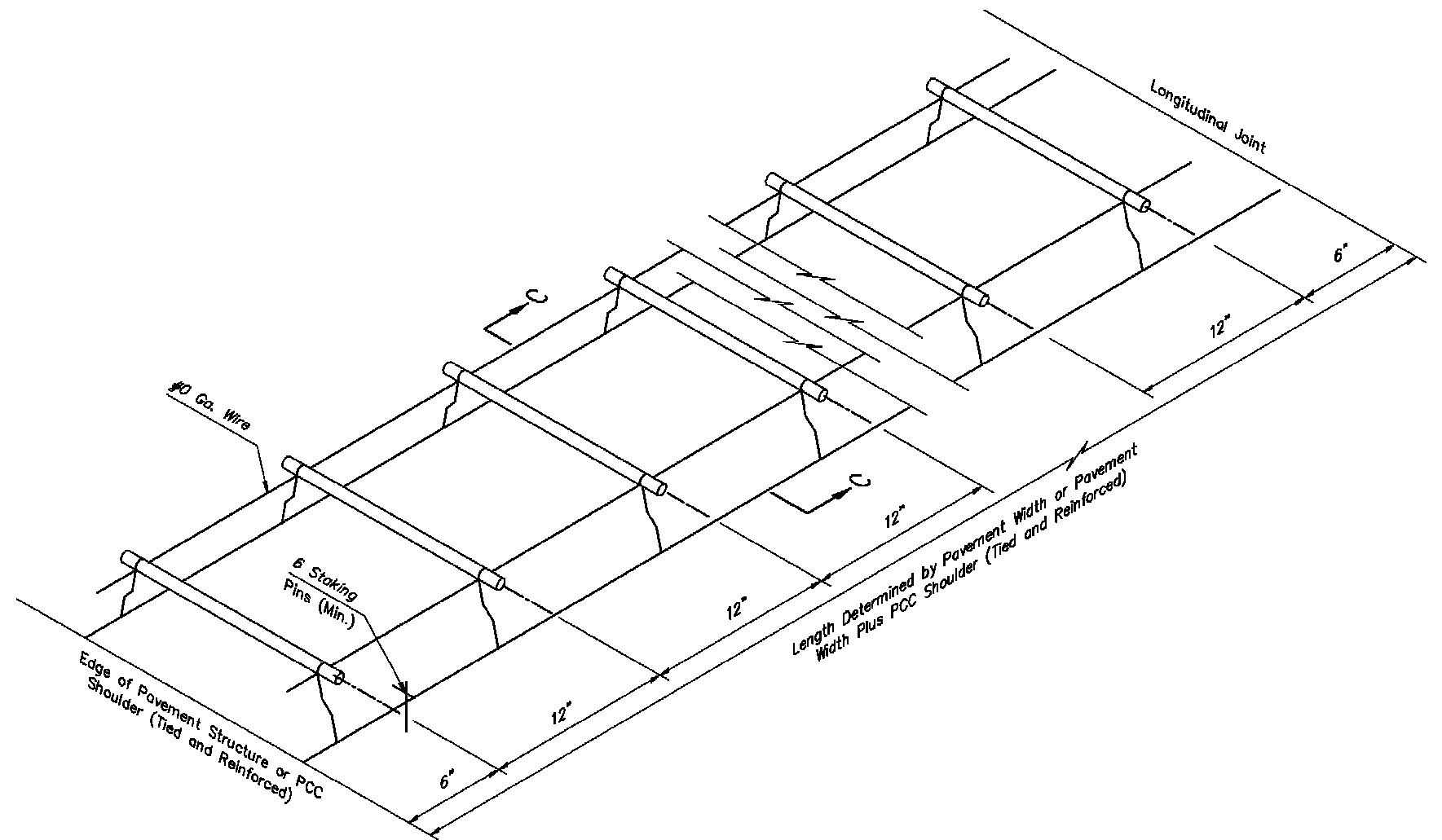
DATE	Z: STANDARD\PV\PV-JOINT.DWG	REVISIONS
11/06/08	Revised	

**CITY OF PRAIRIE VILLAGE
PUBLIC WORKS DEPARTMENT**



**CONCRETE
JOINT DETAILS**

STANDARD DETAIL NUMBER: **107.01**

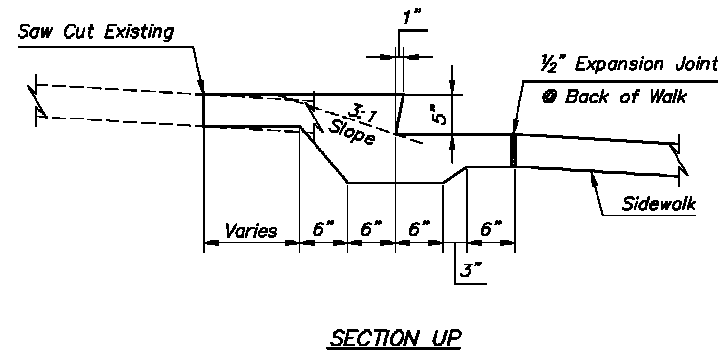
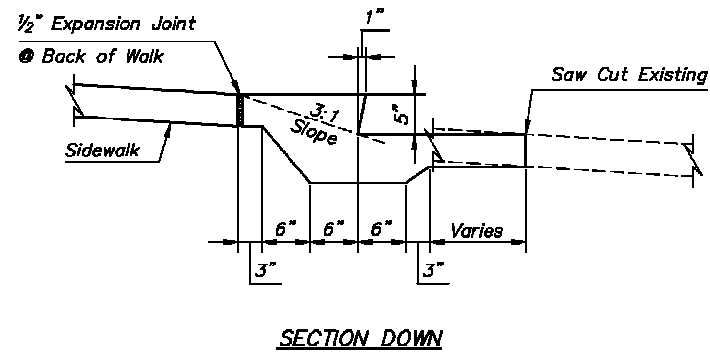


DATE	Z:\STANDARD\PV\PV-CONCPAV.DWG	REVISIONS

**CITY OF PRAIRIE VILLAGE
PUBLIC WORKS DEPARTMENT**

 **CONCRETE PAVEMENT DETAILS**

STANDARD DETAIL NUMBER: **108.01**



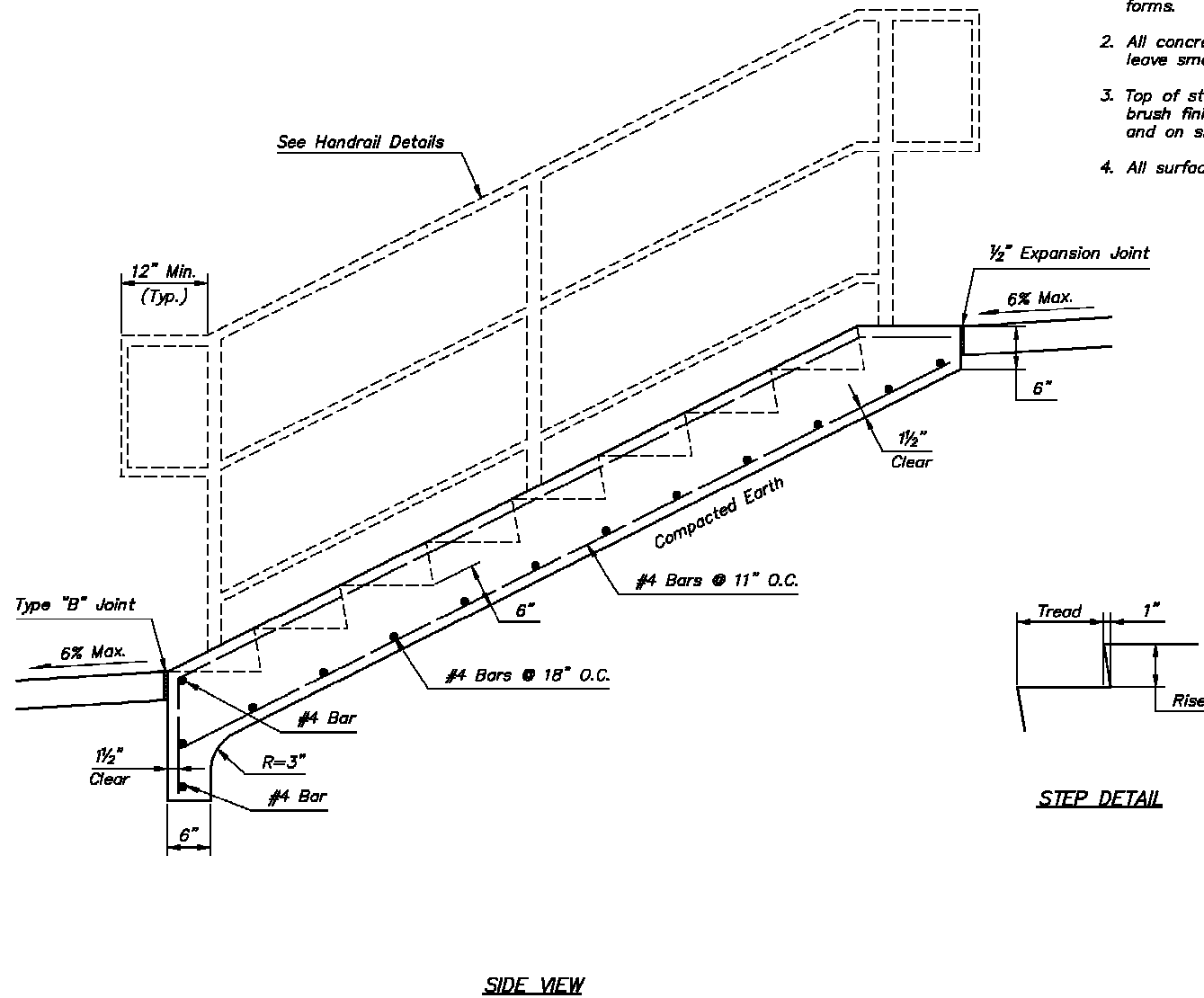
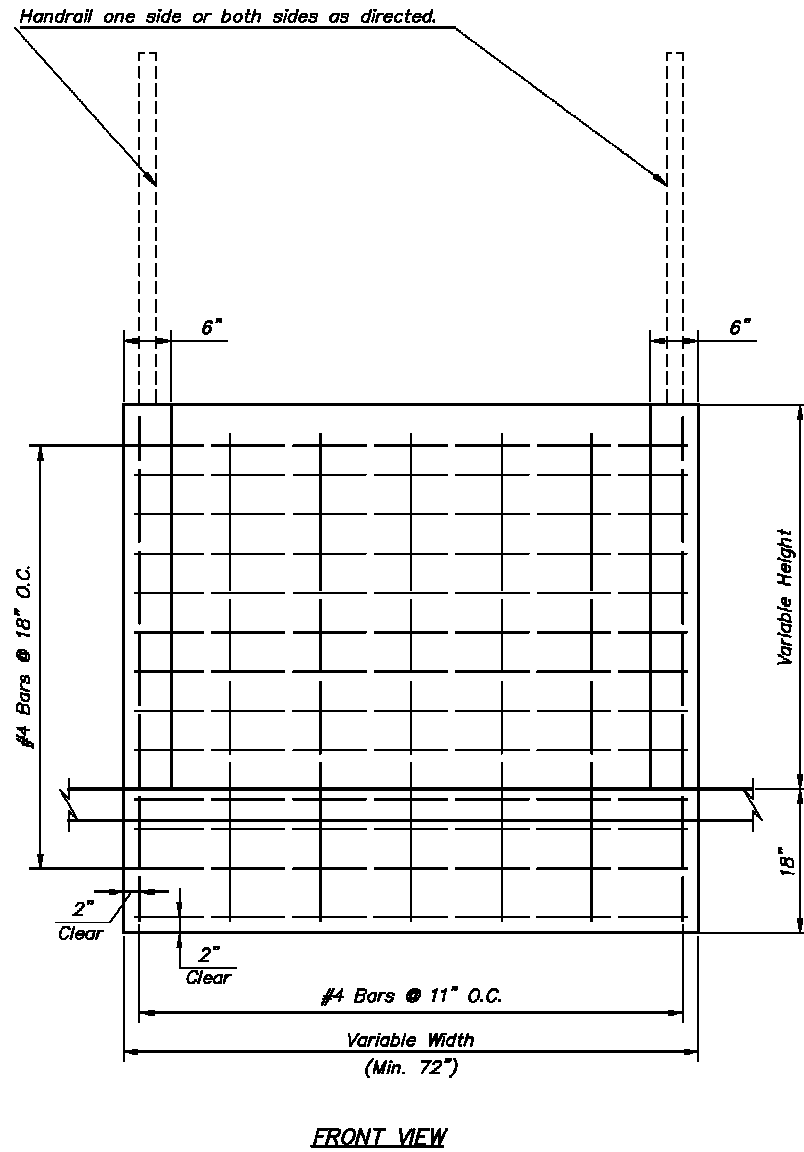
SINGLE STEP DETAILS

NOTE TO DESIGNER:

SLOPE	TREAD *	RISE *
1 1/2:1	10 1/2"	7"
2:1	12"	6"
3:1	15"	5"

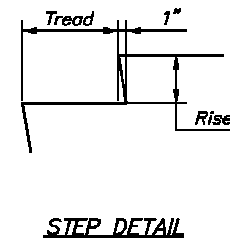
* Tread & Riser dimensions may vary to meet existing conditions provided:

1. Each riser in any set of steps shall be of equal height.
2. Each tread in any set of steps shall be of equal width.
3. (R) x (T) (in inches) shall be not less than 70 or greater than 75.




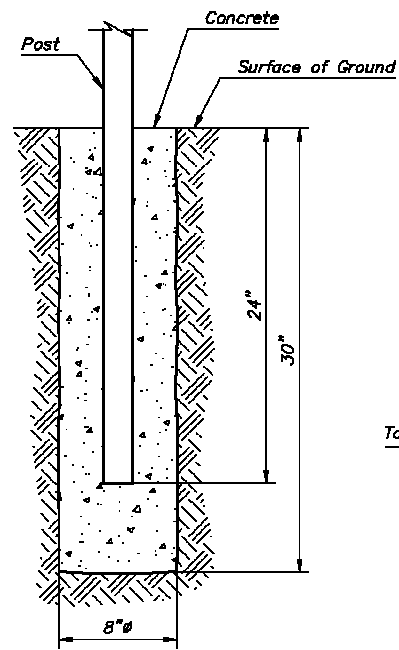
NOTES:

1. Riser forms and inside siderail forms shall be beveled at the bottom edge to permit complete finishing of step treads without removal of forms.
2. All concrete shall be thoroughly tamped and spaded against forms to leave smooth surface without honeycombs.
3. Top of step treads and top of side rails to be steel troweled and then brush finished with brush strokes on treads at right angles to tread and on side rails parallel to side rails.
4. All surfaces shall be flat or slightly sloped to avoid ponding of water.

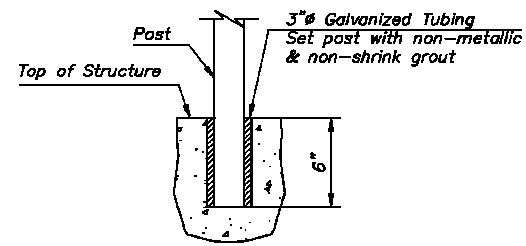


REINFORCED CONCRETE STEPS & HANDRAIL

DATE	Z:\STANDARD\PV\PV-STEP.DWG	REVISIONS
CITY OF PRAIRIE VILLAGE PUBLIC WORKS DEPARTMENT		
 CONCRETE STEP DETAILS		
STANDARD DETAIL NUMBER: 111.01		

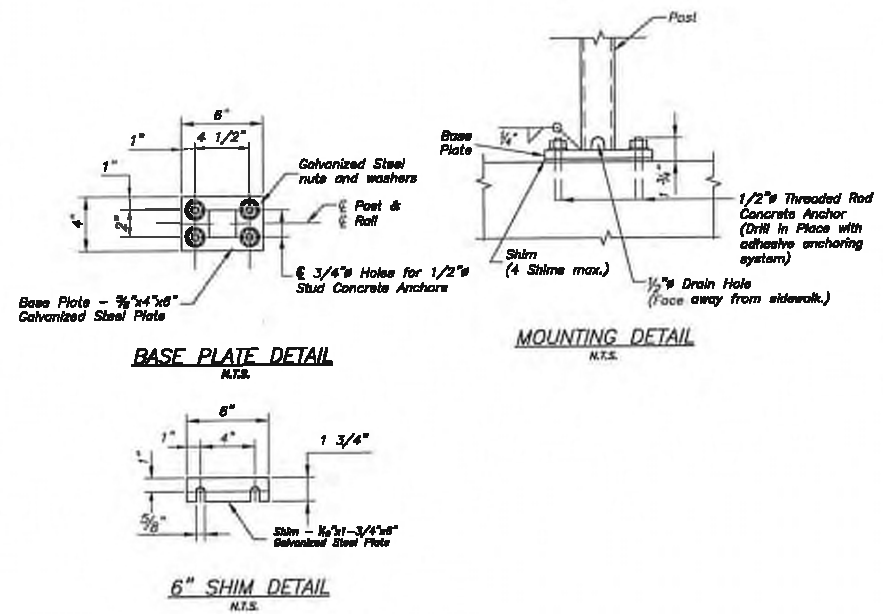


GROUND ANCHOR



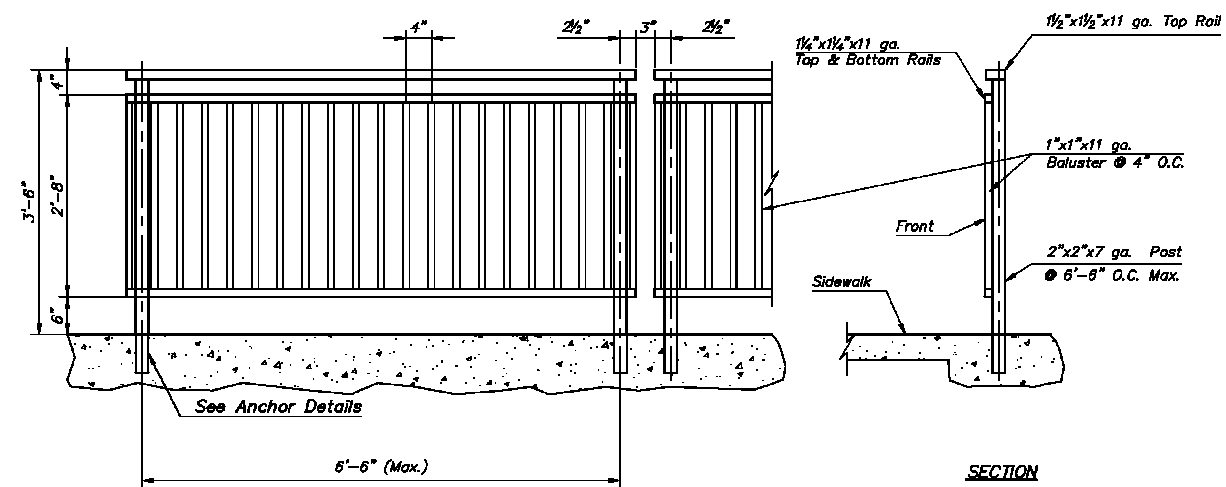
STRUCTURE ANCHOR

HANDRAIL POST ANCHOR DETAILS

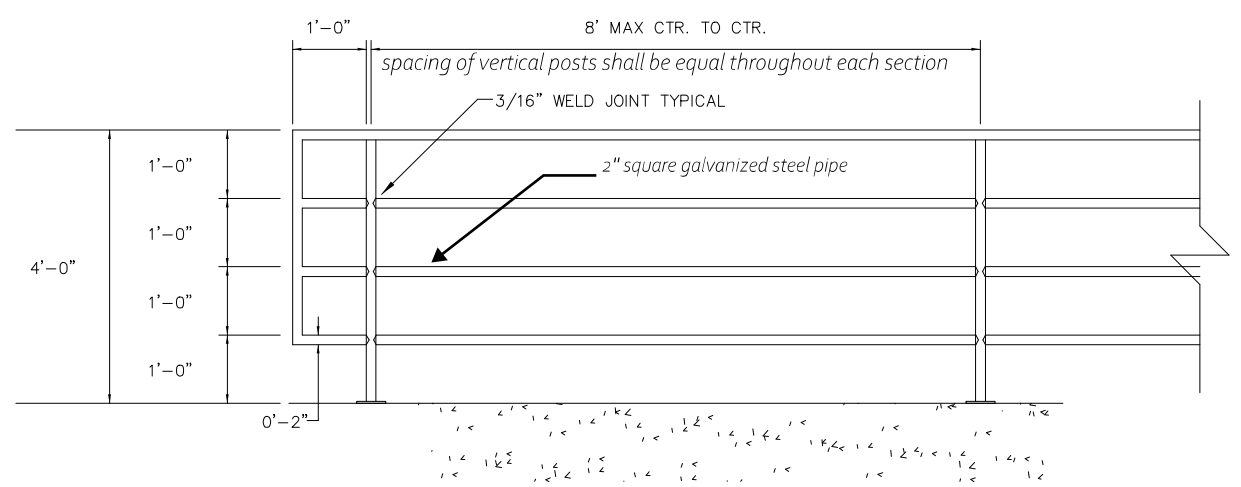


BASE PLATE MOUNTING DETAILS


- NOTES:**
1. Handrail to be constructed from Galvanized Steel Tube with continuous welds.
 2. All ends of tubing shall be capped.
All welds to be ground smooth.
 3. Paint with 1 Coat Tnemec #77 Chem. Prime & 1 Finish Coat Tnemec #2024 Medium Bronze.
 4. Post to be painted 4" below deck elevation, for ground anchor.
 5. Field verify rail lengths and plumbness of rail posts before fabrication. Field measure for horizontal & vertical configuration.
 6. Extend ends horizontally (12" min.) beyond step beginnings or ends. See Concrete Step Details.
 7. For steel plate attachment, the contractor shall attach the handrail to the structure by welding 4"x6"x5/8" steel plates to the bottom of the posts. Fasten plates to the structure with four 1/2" dia. x 4" long epoxy capsule anchors (embed anchors into structure 2 3/4" min.)
 - threaded rod anchor system shall have minimum pullout strength of 4500 lbs. Anchors shall be galvanized.
 - anchor system shall be all weather epoxy adhesive (moisture resistant) meeting ASTM C881. Installation shall follow manufacturer's recommendation.
 8. Type B handrail shall be placed continuously along the top of wall.

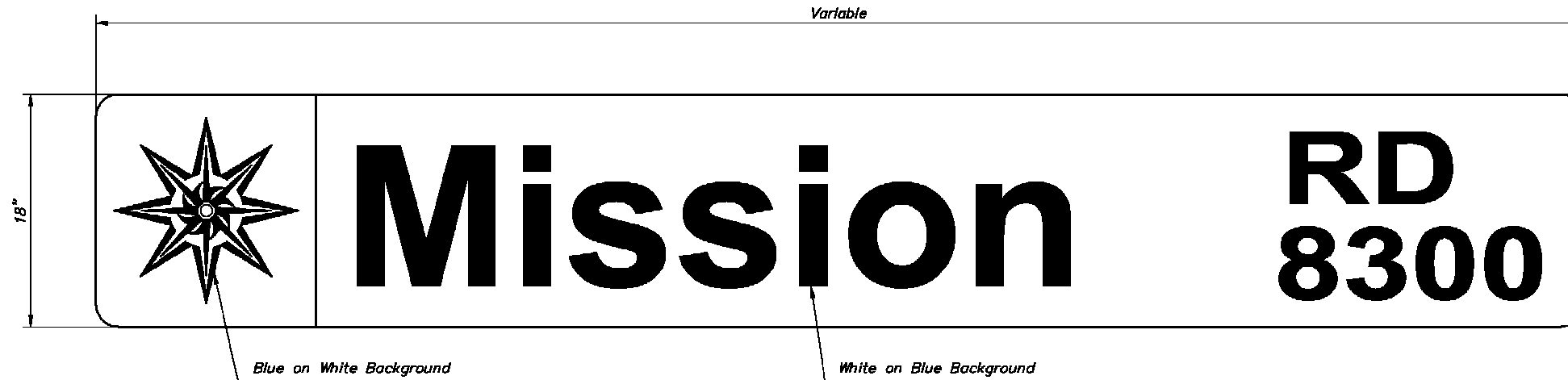


TYPE A HANDRAIL DETAIL



TYPE B HANDRAIL DETAIL

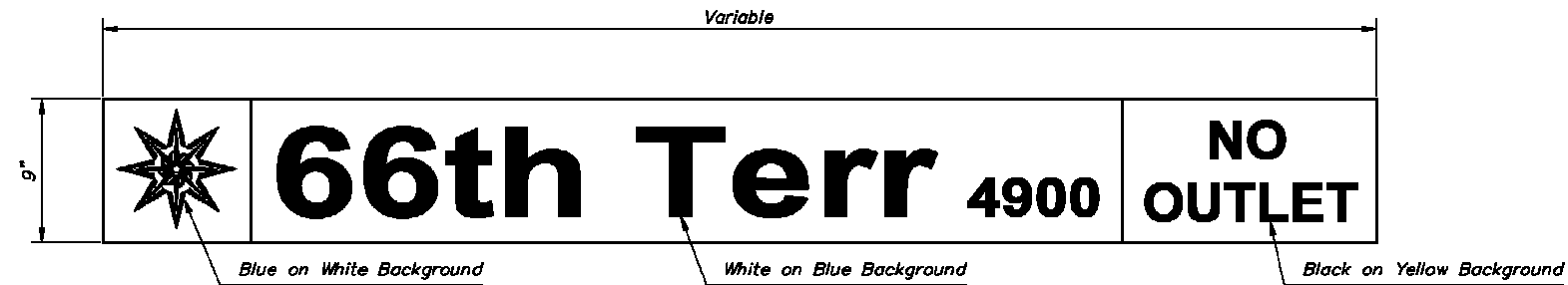
DATE	Z:\STANDARD\PV\PV-HAND.DWG	REVISIONS
3/4/22	Added Type B Handrail	
CITY OF PRAIRIE VILLAGE PUBLIC WORKS DEPARTMENT		
		HANDRAIL DETAILS
STANDARD DETAIL NUMBER: 112.01		



METRO STREET NAME SIGN

NOTE:


Metro Street name Signs shall be single faced and assembled with high intensity reflective sheeting on flat aluminum blades.

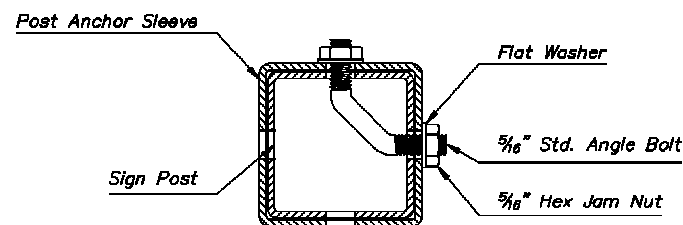
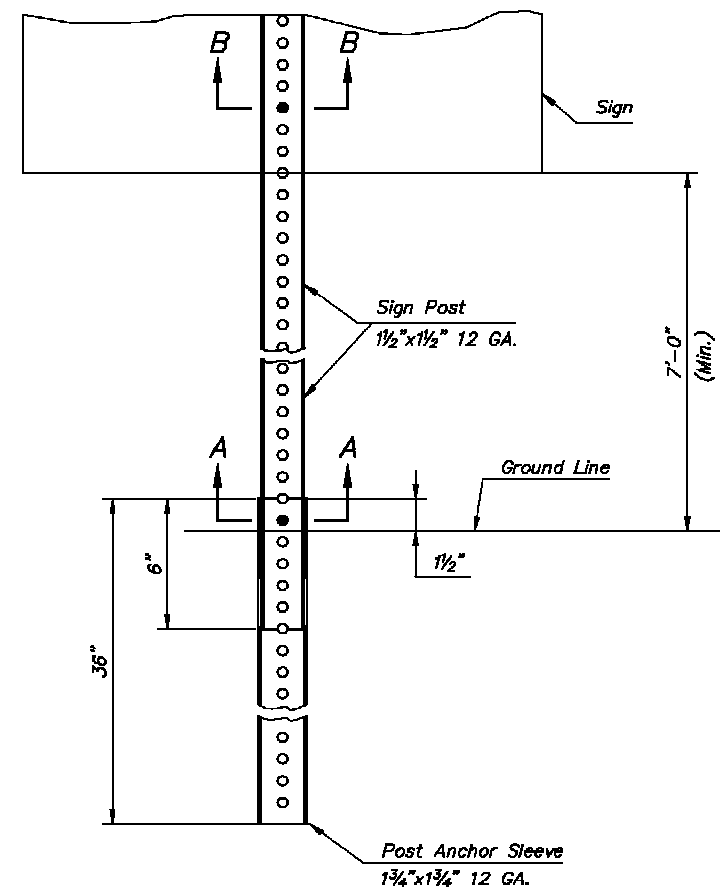


STANDARD STREET NAME SIGN

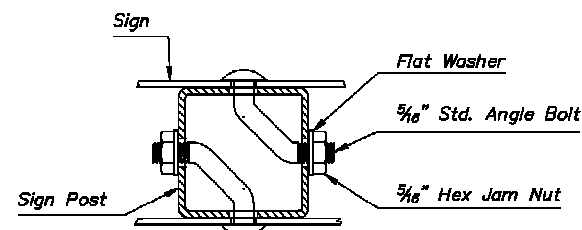
NOTE:

Standard Street name Signs shall be double faced and assembled with high intensity reflective sheeting on extruded aluminum blades.

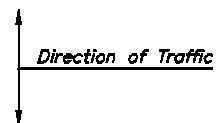
DATE	Z:\STANDARD\PV\PV-STSGN.DWG	REVISIONS
CITY OF PRAIRIE VILLAGE PUBLIC WORKS DEPARTMENT		
	STREET NAME SIGNS	
STANDARD DETAIL NUMBER: 113.01		



DETAILS FOR 1 1/2" SIGN POST



SECTION B-B



MATERIAL REQUIREMENTS:

SIGN POSTS, POST ANCHORS, AND POST ANCHOR SLEEVES:

The sign posts and post anchor sleeves shall conform to (1) Hot Rolled Carbon Steel ASTM A-570 Grade 33 or ASTM Structural Quality C 1021 with a Hot-Dipped Galvanizing conforming to AASHTO M-120 with an In-line System followed by a Chromate Conversion and a Cross-Linked Polyurethane Acrylic Exterior Coating or (2) a Galvanized finish Cold Rolled Carbon Steel ASTM A-446 Grade A with a Galvanizing conforming to ASTM A-525, Designation G-90.

The sign post shall have 7/8" diameter holes or 7/8" diameter embossed ring (die-cut knockouts) at 1" centers on all four sides for total length of post.

The post anchor and post anchor sleeve may be furnished without the bolt holes on all four sides with the exception of the holes immediately above the ground line.

All holes shall be drilled or punched and all welds, cuts, burrs, and sharp edges are to be smoothed off before application of finish.

FASTENING ACCESSORIES:

The bolts, nuts, and washers shall comply with Subsection 1614 of the "Standard Specifications For State Road And Bridge Construction" (1990 edition).

The bolts, nuts, and washers shall be bid subsidiary to the bid item "Square Steel Post".

BASIS OF ACCEPTANCE:


Acceptance of the steel posts, anchors, sleeves, and fasteners furnished to comply with the above requirements will be based on receipt and approval of a Type D Certification as described in Section 2600 of the "Standard Specifications For State Road And Bridge Construction" (1990 edition) and visual inspection for condition and dimensional requirements.

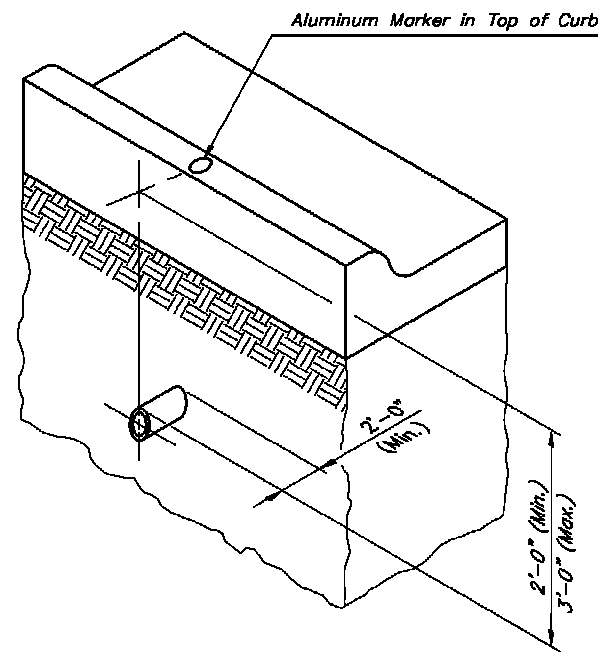
INSTALLATION SEQUENCE:

1. Drive post anchor sleeve into subgrade.
2. Install sign post into the post anchor sleeve

NOTES:

In all installations, the first hole above the ground line on the sign post and post anchor sleeve must be in line for insertino of the corner bolt.

DATE	Z:\STANDARD\VP\VP-SPOST.DWG	REVISIONS
CITY OF PRAIRIE VILLAGE PUBLIC WORKS DEPARTMENT		
		SIGN POST
STANDARD DETAIL NUMBER: 114.01		




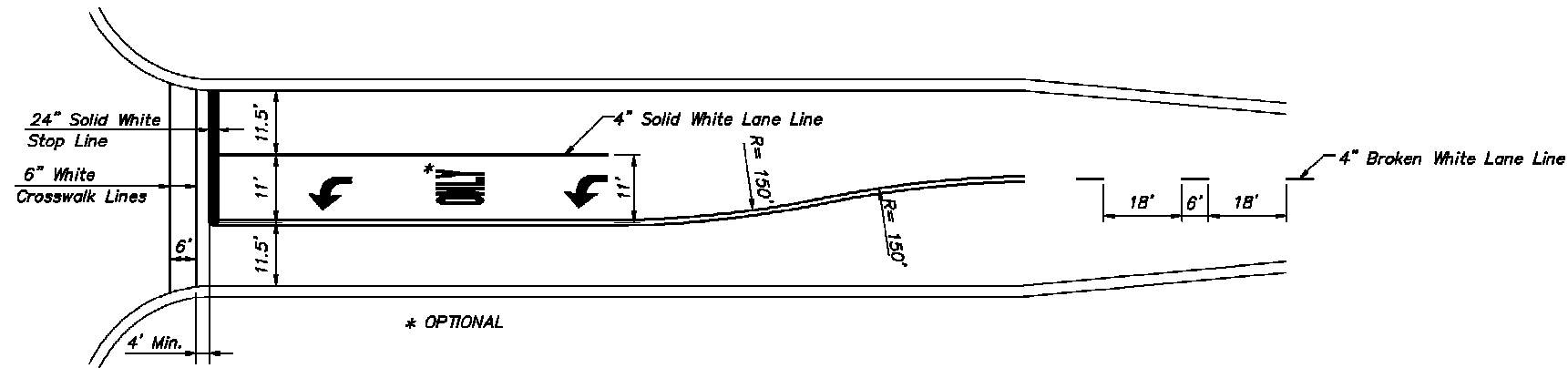
NOTE:

Conduit shall be placed 2'-0" to 3'-0" below the top of curb elevation and shall extend 2'-0" minimum beyond the back of curb. Conduit shall be installed to drain, and all ends shall be threaded and capped. An aluminum marker shall be placed in the top of the curb directly over the conduit. Aluminum markers will be furnished by the City of Prairie Village.

**STREET LIGHT AND TRAFFIC SIGNAL
CONDUIT MARKING DETAIL**

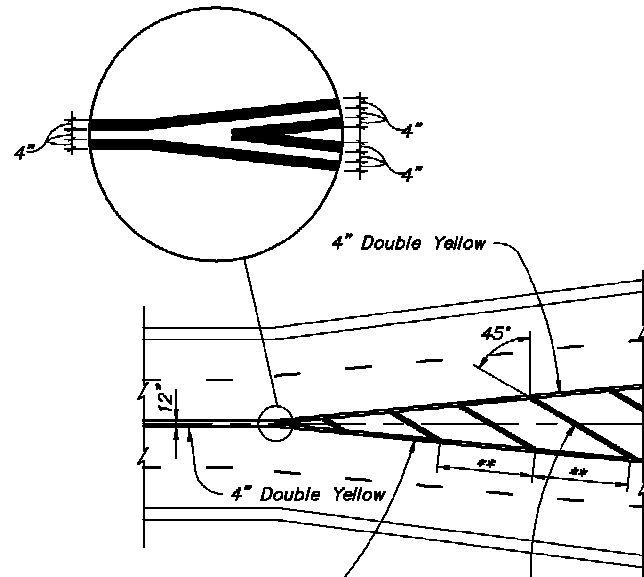
No Scale

DATE	Z:\STANDARD\PV\PV-AMARK.DWG	REVISIONS
CITY OF PRAIRIE VILLAGE PUBLIC WORKS DEPARTMENT		
	CONDUIT MARKING DETAIL	
STANDARD DETAIL NUMBER: 115.01		



NOTES:

1. Stop lines to be located between 40 L.F. and 180 L.F. from the corresponding traffic signal head.
2. Stop lines to be located a minimum of 4 L.F. behind crosswalk.
3. All marking shall comply with the latest version of the MUTCD unless otherwise noted.



Minimum 100' Taper

Taper:

$$L = \frac{WS^2}{60}$$

; if posted speed limit is less than 40 mph.

$$L = WS$$

; if posted speed limit is greater than 45 mph.

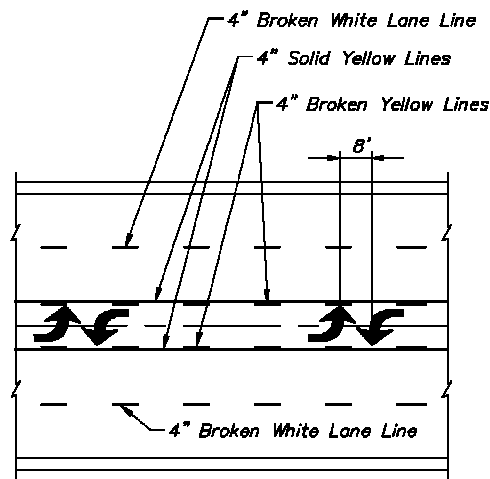
Taper may be reduced using following criteria.

Merge Taper - at least L

Shifting Taper - at least L/2

Shoulder Taper - at least L/3

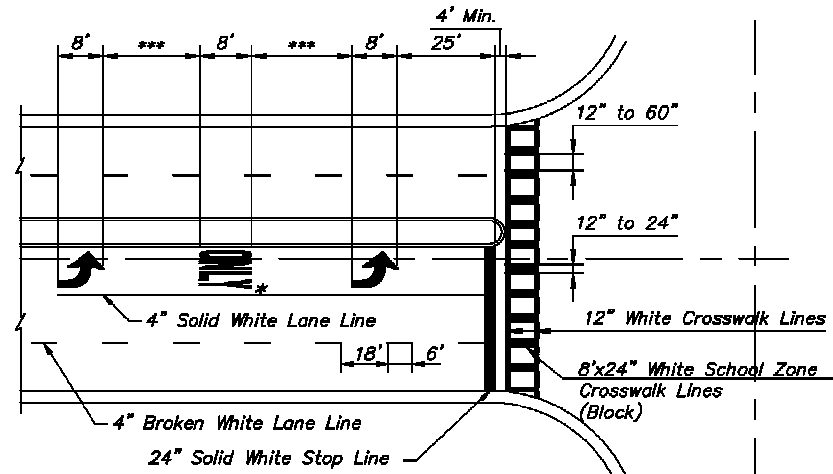
** Diagonal Spacing is Equal to Speed Limit. (i.e. 35 m.p.h. = 35'-0")



NOTE:
Word & Symbol Markings Shall Be White.

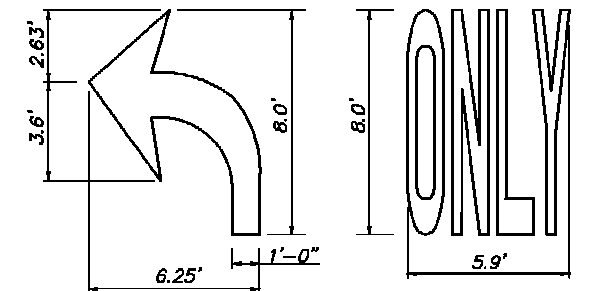
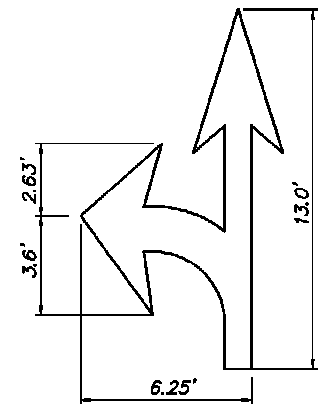
**TYPICAL PAVEMENT MARKING DETAILS
FLUSH MEDIAN**

*** The longitudinal space between word or symbol message markings, including arrow markings should be at least four times the height of the characters for low-speed roads, but not more than ten times the height of the character.



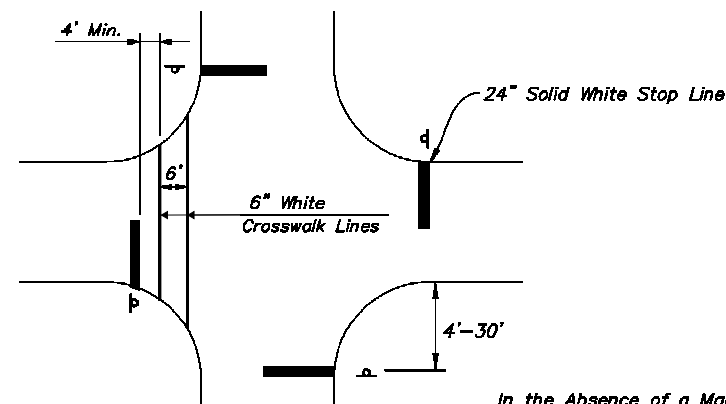
* OPTIONAL

NOTE:
Longitudinal crosswalk lines should be 12" to 24" wide and spaced 12" to 60" apart. The spacing design should avoid the wheel paths.



WORD & SYMBOL DETAILS

NOTE:
Right Turn and Combination Right Turn/Straight Arrows are Reverse of Arrows Shown.



In the Absence of a Marked Crosswalk, Stop Line Shall be Placed at Desired Stop Location.

STOP LINE LOCATION DETAIL

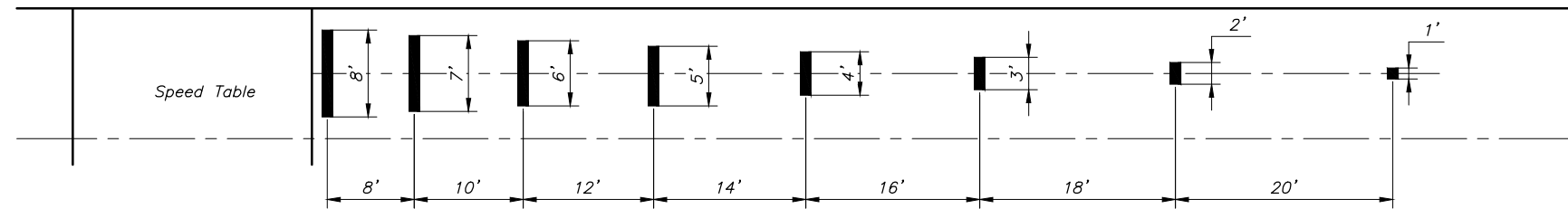
DATE	Z:\STANDARD\PV\PV-PAVEDET	REVISIONS

**CITY OF PRAIRIE VILLAGE
PUBLIC WORKS DEPARTMENT**

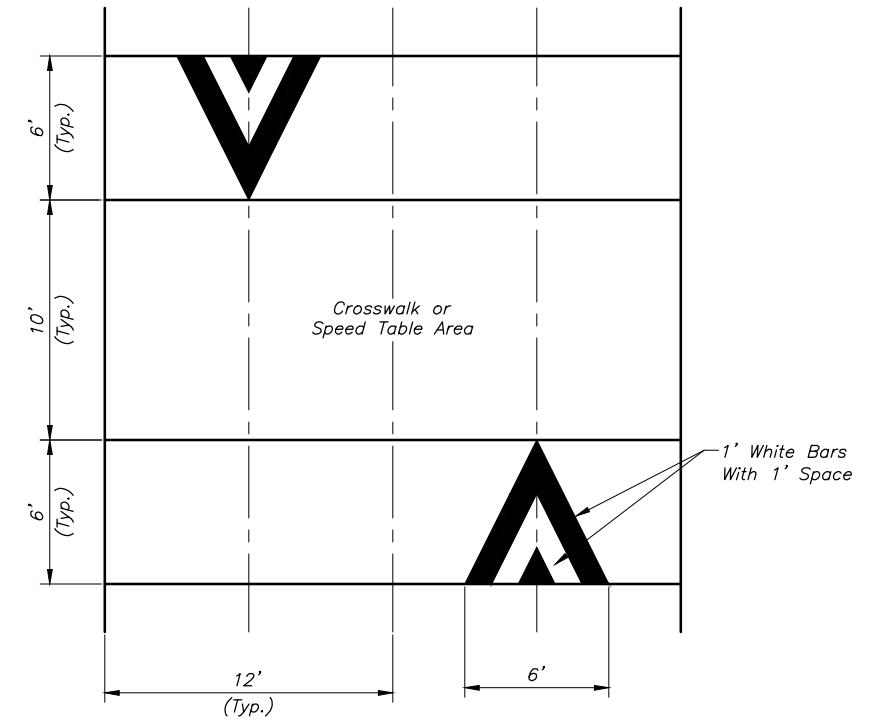


PAVEMENT MARKING DETAILS

STANDARD DETAIL NUMBER: **116.01**

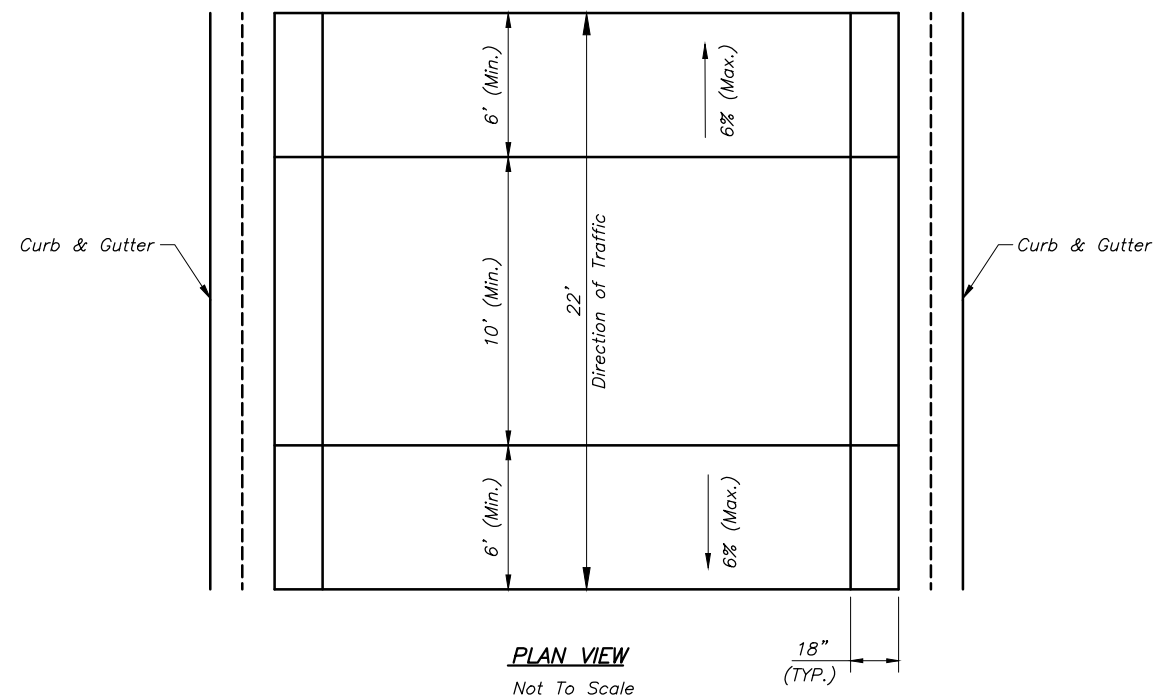


SPEED TABLE ADVANCE WARNING MARKING (WHITE)
 (PLACED ON BOTH SIDES OF THE TABLE)
 Not To Scale

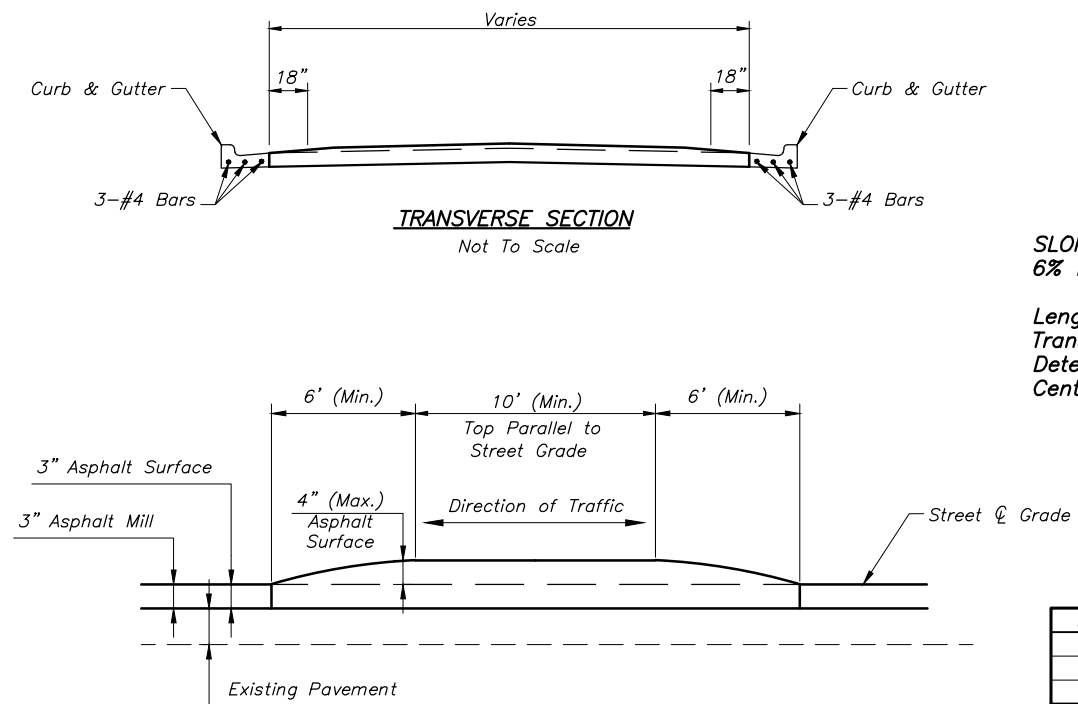


SPEED TABLE MARKING USED WITH CROSSWALK LEADING EDGE (WHITE)
 Not To Scale

SPEED TABLE PAVEMENT MARKING DETAIL



PLAN VIEW
 Not To Scale



TRANSVERSE SECTION
 Not To Scale

LONGITUDINAL SECTION
 Not To Scale

SLOPE= 1":1.5'
 6% Max.

Length of
 Transition to be
 Determined After
 Center is Placed.

DATE	REVISIONS

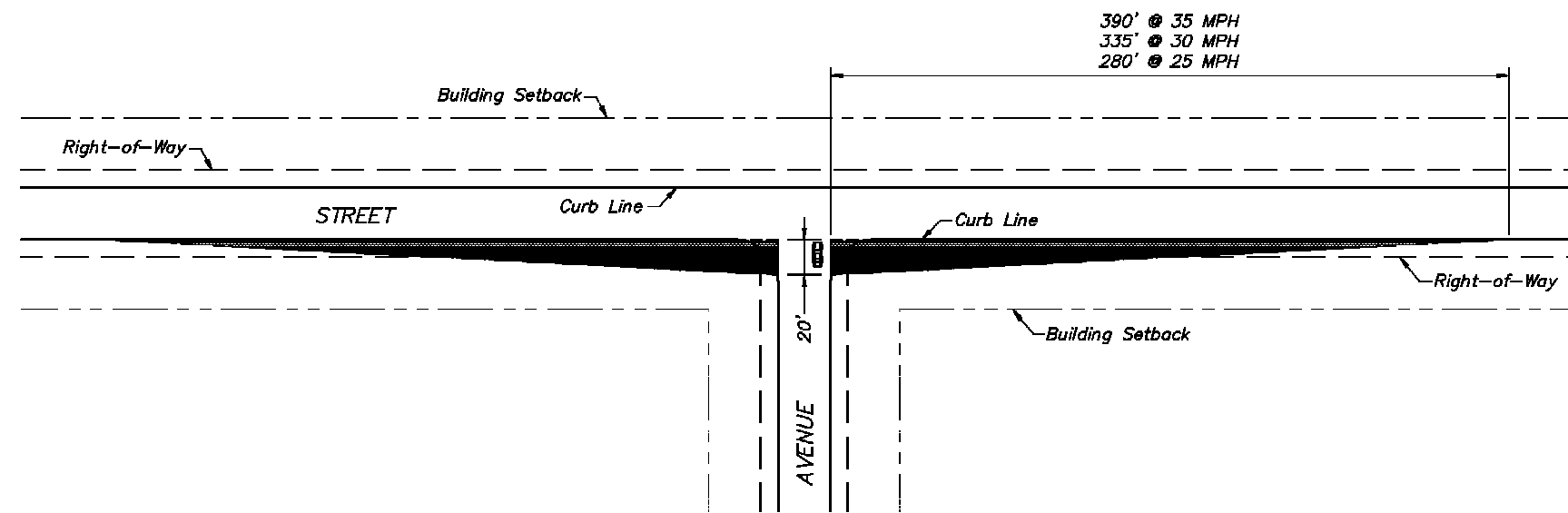
**CITY OF PRAIRIE VILLAGE
 PUBLIC WORKS DEPARTMENT**



SPEED TABLE

STANDARD DETAIL NUMBER: 116.02

SPEED TABLE DETAIL



STREET INTERSECTION SIGHT LINE OBSTRUCTION

Scale: 1"=100'

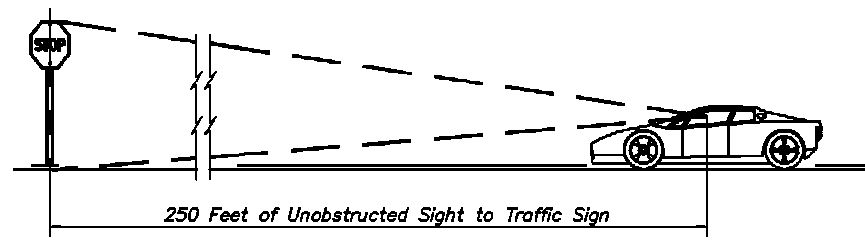
DATE	Z:\STANDARD\PV\PV-SIGHTLINE.DWG	REVISIONS

**CITY OF PRAIRIE VILLAGE
 PUBLIC WORKS DEPARTMENT**

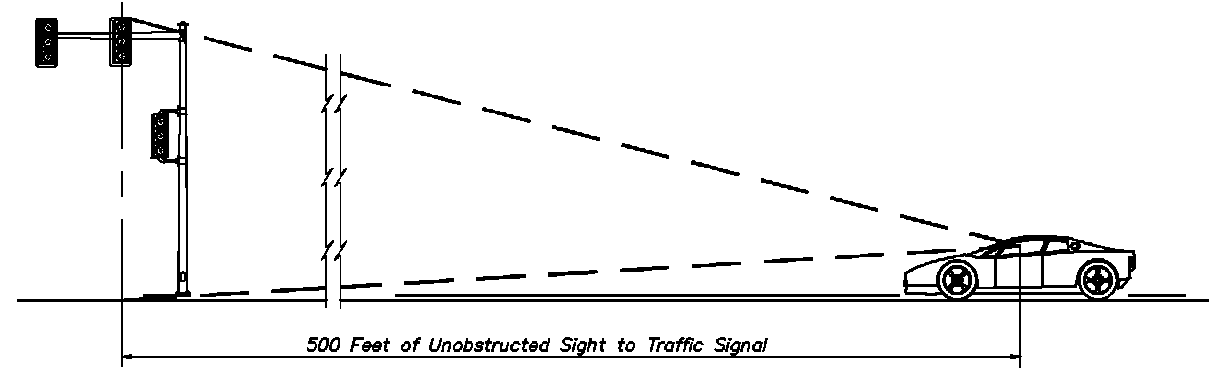


STREET INTERSECTION
 SIGHT LINE OBSTRUCTION

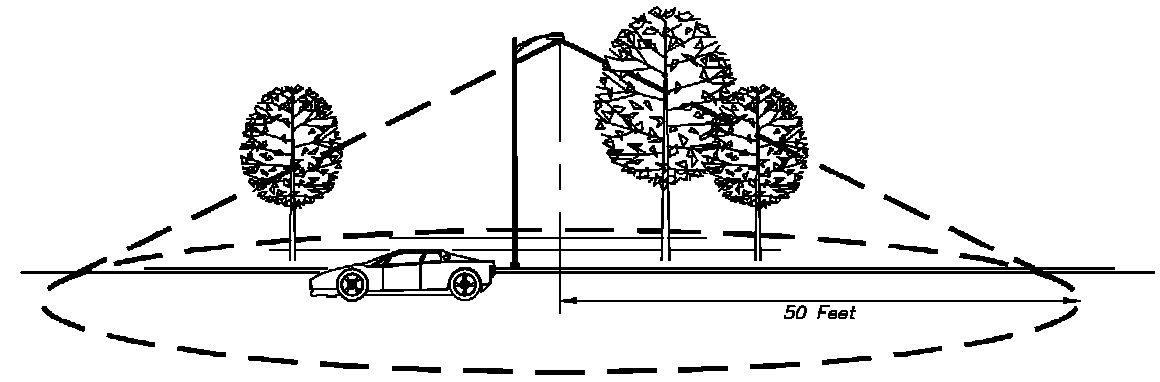
STANDARD DETAIL NUMBER: **117.01**



TRAFFIC SIGN SIGHT OBSTRUCTION DETAIL



TRAFFIC SIGNAL SIGHT OBSTRUCTION DETAIL



STREET LIGHT OBSTRUCTION DETAIL

DATE	Z:\STANDARD\PV\PV-SIGHTOBSTR.DWG	REVISIONS

**CITY OF PRAIRIE VILLAGE
PUBLIC WORKS DEPARTMENT**



STREET OBSTRUCTION
DETAILS

STANDARD DETAIL NUMBER: **117.02**

NOTES:

SIGN TO BE ERECTED PRIOR TO CONSTRUCTION ACTIVITY, MAINTAINED BY THE CONTRACTOR THROUGHOUT CONSTRUCTION AND REMOVED UPON COMPLETION OF THE PROJECT.

LOCATION OF SIGN TO BE DETERMINED BY THE ENGINEER.

NAME OF THE COOPERATING CITY TO BE SUPPLIED BY THE ENGINEER.

IF METAL IS USED, THE SIGN SHALL BE .080 GA ALUMINUM, SHEETED WITH WHITE VINYL.

IF WOOD IS USED, THE SIGN SHALL BE 3/4" MDO, 1 SIDE PREPRIMED WITH FACE & EDGES PAINTED WHITE.

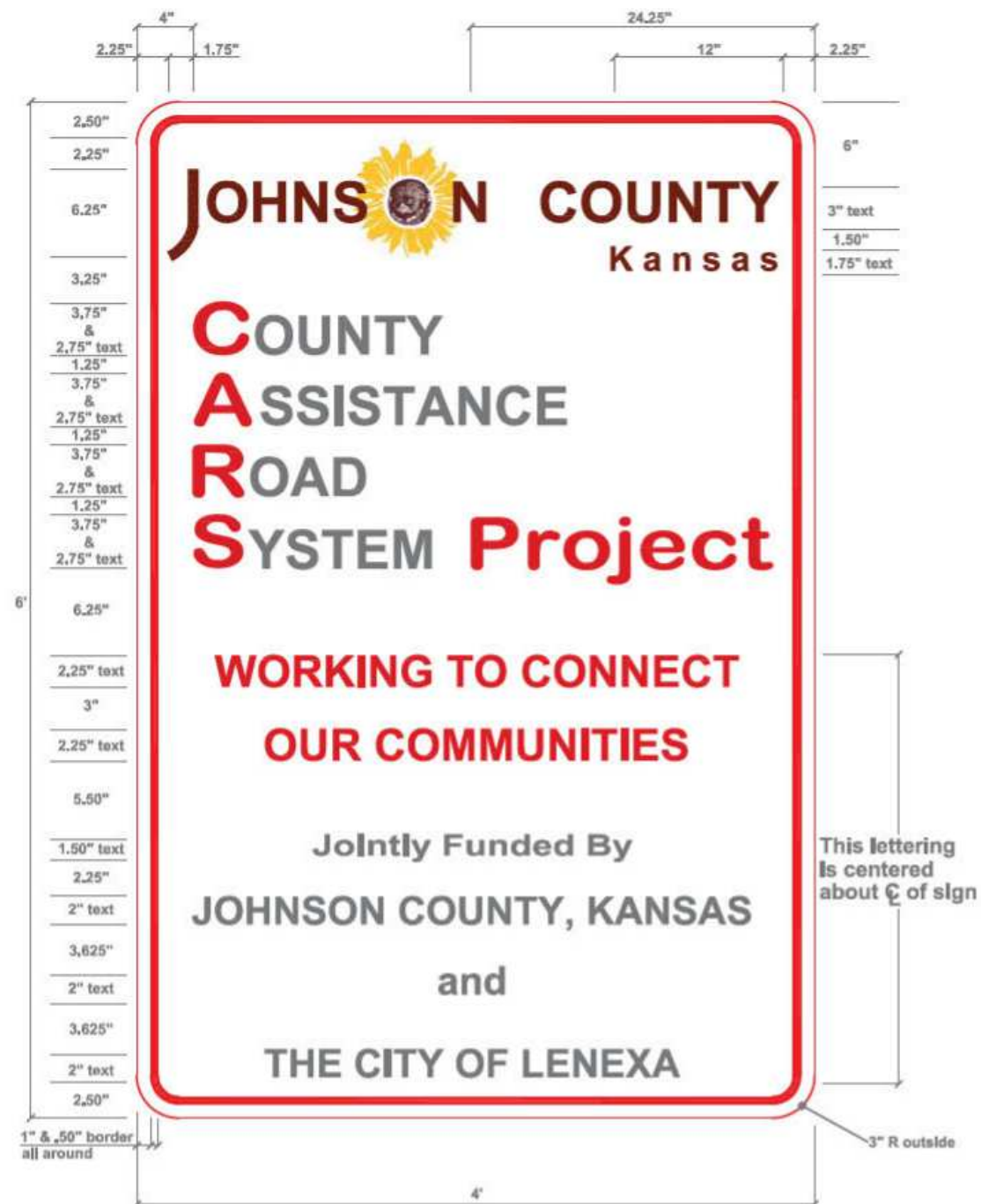
ALL SIGN HARDWARE AND INSTALLATION IS AS PER CITY STANDARD, KDOT STANDARD OR AS SHOWN ON THE PLANS.


Lettering - Color / Font As Follows:
(see sign for text height)

PMS 187C:
C
A
R
S Project
**WORKING TO CONNECT
OUR COMMUNITIES**
(and .50" Border all around)

Black Arial Bold:
COUNTY, ASSISTANCE, ROAD, SYSTEM
Jointly Funded By
JOHNSON COUNTY, KANSAS
AND
THE CITY OF LENEXA

Johnson County Logo:
All Fonts: "Arial" (see sign for text height)
Logo colors as follows:
**PMS 490C - Johnson County
Kansas**
PMS 123C - Flower
PMS 490C - Middle of Flower



DATE	Z: \STANDARD\PV\PV-CARSign	REVISIONS
CITY OF PRAIRIE VILLAGE PUBLIC WORKS DEPARTMENT		
		C.A.R.S. SIGN DETAIL
STANDARD DETAIL NUMBER: 118.01		