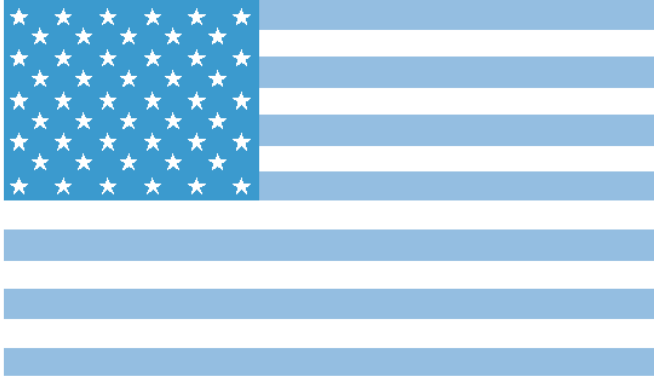


THE PRAIRIE VILLAGE Voice

February 2002

Villagefest 2002 Volunteers Needed

It's hard to think about the hot days of July in February, but planning is already underway for **Villagefest 2002**.



Prairie Village's annual community celebration will be held on **Thursday, July 4th**. Events will begin in the morning and continue through the late afternoon, including food, games, and many displays. Villagefest 2002 will be held on the Municipal Campus at 7700 Mission Road. This is an excellent opportunity to have some good family fun and celebrate America's "birthday". We hope everyone will attend!

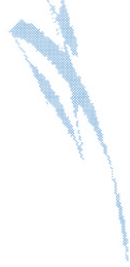
Volunteer opportunities exist by serving on the committee or the day of the event. For more information, please call Lori Franke at 913-381-6464 ext. 4207 or email to lfranke@pvkansas.com.

Jim Hamil Exhibit Continues Through February

The **Prairie Village Arts Council** is pleased to announce that paintings and prints by local artist and area resident **Jim Hamil** will remain in the Municipal Offices' R.G. Endres Gallery through the month of February.

Come and take a walk through time and allow your imagination to visit the different scenes Jim Hamil creates. The exhibit will be on display through **February 28, 2002**. **Gallery hours are Monday – Thursday, 8:00 a.m. to 7:00 p.m. and Friday, 8:00 a.m. – 5:00 p.m.**

Arts
COUNCIL
Prairie Village



Visit Prairie Village on the Web at

www.PVKANSAS.com

Don't forget to visit Prairie Village on-line at www.pvkansas.com. The site is a great source of information about Prairie Village programs and services, like actions taken at City Council meetings, building permit requirements, or finding out about park shelter reservations. The website also lets you e-mail your elected officials and City staff.

We hope you'll find the website fun and enlightening. Keep checking back as the site is regularly updated.



Mayor's Message



Public participation is an important part of every civic meeting, giving residents an opportunity to make their thoughts and opinions known to the Mayor, City Council members, and City staff. It is also a time to offer suggestions for improving City programs and services.

On **Wednesday, February 13, 2002 at 7:00 p.m.** there will be a public forum in the Council Chambers. You can help the City's Park & Recreation Committee plan for the future by telling us what you think about Prairie Village parks. By receiving resident input, the Committee will know where to direct its efforts as it strives to meet the community's park and recreation needs.

One of the goals of this forum is to accommodate the City's residents in a way that preserves and enhances the

special appeal of Prairie Village. The preservation of our neighborhoods, including our parks, is of great importance to our citizens, and helps maintain property values.

One of Prairie Village's strengths is that residents continue to preserve a small town atmosphere by choosing to be involved in their neighborhoods, schools, and City government.

We always appreciate your comments. This is your City and it is important to us to know what you think and feel. The Park and Recreation Committee looks forward to seeing you on February 13th.

Ron Shaffer
Mayor

Building Permit Reports Now Available

Do you want to know if remodeling or new construction is planned in your neighborhood? A weekly "Permits Issued" report is now available from the Codes Administration Department. This report will let you know when building permits are issued for residential and commercial construction projects in the City.

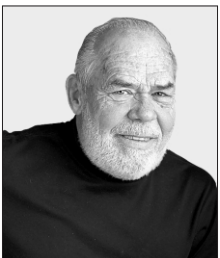
To view these reports, stop by the Municipal Offices between 8:00 a.m. and 5:00 p.m. Monday through Friday.

Monthly Tree Tips from the Tree Board

- When considering where to plant trees in your yard, keep in mind that trees planted on the South and West sides of your house can provide for a more optimal climate control inside the house.
- Trees and shrubs are wildlife friendly. Wildlife enhances the urban environment that we all share.
- Trees produce oxygen and clean the air. Your family and your neighborhood will benefit when trees are planted and maintained.



Meet Author Charles Gusewelle



Charles Gusewelle
Photo courtesy of
Kansas City Star

The Corinth Library, in cooperation with Claridge Court, is pleased to invite you to meet *Kansas City Star* columnist **Charles Gusewelle** on Sunday, March 3rd, 3:00p.m. at Claridge Court, 8101 Mission Road. The audience will be introduced to his newest collection of essays, *On the Way to Other Country*, a gathering of more than 120 of his treasured stories.

Handicapped accessible parking is available at Claridge Court. Additional parking is available at the Library and the Mission Bank building at Somerset and Mission Road.

For more information call 913-967-8650. The meeting is free and open to the public. No registration is required.

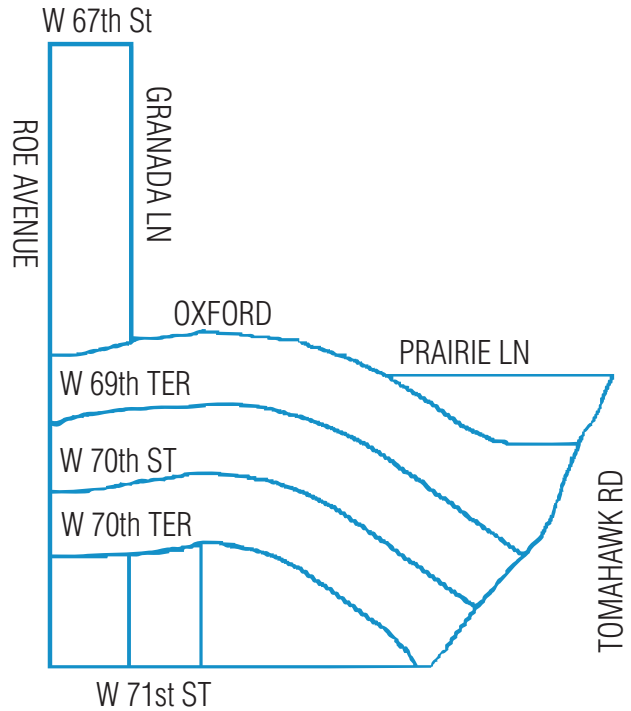
Prairie Village Homes Association Tree Fertilization Program Continues

Building on last year's success, the **Prairie Village Homes Association** will continue its Tree Fertilization Program. Through an agreement with a local tree service, the Homes Association will be fertilizing trees located in the public right-of-way on the following streets:

- Granada Lane – 67th Street to Oxford
- Roe – East side of the street, 67th St. to 71st St.
- Prairie Lane – Tomahawk to Oxford
- Oxford – Roe to Tomahawk
- 69th Tr. – Roe to Tomahawk
- 70th St. – Roe to Tomahawk
- 70th Tr. – Roe to Tomahawk
- Granada Lane – 70th Tr. To 71st Street
- Granada Road – 70th Tr. To 71st Street
- 71st St – North Side, Roe to Tomahawk

The Homes Association will fertilize **Right of Way trees only**. However, residents in the area may arrange to have their trees fertilized at their cost while crews are in the area. This will allow residents to take advantage of discounts of up to 35% which have been negotiated by the Homes Association.

If you live in this area and would like to participate in this program or learn how this type of program could be started in your neighborhood, contact Jim Hanson at 913-262-4188.



Who Can You Call?

After you finish reading this issue of the *Prairie Village Voice*, cut-out this handy guide of telephone numbers and websites and keep it in a useful place. The next time you need information; it's just a call or click away!

Emergency	9-1-1		Prairie Village Municipal Offices	913-381-6464	www.pvkansas.com
Animal Control	642-6868	www.pvkansas.com	Prairie Village Police – non-emergency	913-642-6868	
Building Inspections	385-4604	www.pvkansas.com	Time Warner Cable	913-451-6464	www.twckc.com
Code Enforcement	385-4605	www.pvkansas.com	Motor Vehicle Department	913-715-5000	www.jocoks.com
Deffenbaugh Disposal or for special pick-up	913-631-3300		Northeast Johnson Cty. Chamber of Commerce & Visitors Bureau		
Driver's License Office	913-432-2266	www.jocoks.com		913-262-2141	www.nejcchamber.com
Johnson County Fire District #2	913-432-1105		Prairie Village Post Office	1-800-275-8777	www.usps.com
Johnson Cty. Wastewater	913-681-3200	www.jocoks.com	Prairie Village Merchants Association	913-362-9668	
Kansas Gas Service	1-800-794-4780	www.kgas.com	Shawnee Mission School District	913-993-6200	www.smsd.org
KCPL Customer Service	816-471-5275		Voter Registration	913-782-3441	www.jocoelection.org
To report street lights out	816-471-5275		WaterOne	913-895-5500	www.waterone.org
To report lights out at home	888-544-4852	www.kcpl.com			

Holiday Office Hours

In observance of the Presidents' Day holiday, City offices will be closed on Monday, February 18th. Emergency services are always available by dialing 9-1-1.

Trash and recycling services WILL NOT be affected by the President's Day holiday.

Community Profile Available

The 2001 Prairie Village Community Profile is now available. The Community Profile is full of information including the history of Prairie Village, City departments, frequently needed phone numbers and much more! Stop by City Hall and pick one up today.



Everyone May Participate

If any individual requires an accommodation to participate in public meetings, contact the City Clerk's Office at 913-381-6464 (TDD 1-800-766-3777) at least 48 hours prior to the scheduled meeting time, if possible, to make arrangements.



Code Corner Property Maintenance Check List

The City's Property Maintenance Codes were adopted to help maintain property values and improve the appearance of Prairie Village neighborhoods. Below are some of the most common property maintenance violations.

Please review this list and take appropriate action to be sure your property complies with City Codes.

- **Trash & Debris**—Remove from exterior of the property.
- **Exterior Storage**—Properly store items in the rear of the property completely screened from view, or remove from property.
- **Parking on yard**—Parking permitted on concrete or asphalt only.
- **RV Storage**—Only one RV, Boat, or Trailer allowed, stored behind the front building line on a hard surface and 5 feet from side and rear property lines. On corner lots, these items must also be at least 15 feet from the street.
- **Inoperable Vehicles**—Vehicles must be legally licensed and in operating condition.
- **Minimum Standards**—Wall surfaces, trim, gutters, downspouts, and out buildings must be free of chipped and peeling paint, rust, and dry rot.

Thank you for your support in keeping Prairie Village a great place to live! If you have any questions about the property maintenance code or would like to report a possible violation, contact Marcia Gradinger at 913-385-4605.

Tax Forms NOW Available at the Municipal Building

Yes, it's that time of year again. 2001 Kansas State Individual Income Tax, 2001 Kansas Homestead and Food Sales Tax Claim, and 2001 Corporate Income Tax Forms are available in the lobby of the Municipal Offices, 7700 Mission Road, Monday – Thursday, 8:00 a.m. to 7:00 p.m. and Friday, 8:00 a.m. to 5:00 p.m.

PRESORTED STANDARD
U.S. POSTAGE
PAID
PERMIT NO. 549
SHAWNEE MISSION
KANSAS