

VOICE



Holiday Tree festivities go virtual to raise funds for PV Foundation

In the interest of public health, and due to social distancing guidelines in place surrounding the COVID-19 pandemic, the Mayor's Holiday Tree festivities will be virtual this year. The Holiday Tree Lighting is one of the best-known annual fundraisers for the Prairie Village Foundation.

The Foundation started in 1983 to care for the Prairie Village park system, but it has since branched out in numerous directions to touch miles of deeper roots within the community. Now, along with parks, the Prairie Village Foundation also cares for community members in need through utility assistance, minor home repairs/maintenance, food assistance, and other vital needs of the community. The Foundation also sup-

ports Prairie Village arts, recreational scholarships, and various community events.

The COVID-19 pandemic has had a global impact on the economy, which has also been felt locally. If you're in a position to help, please consider a donation to the Prairie Village Foundation. Donations can be made online at www.prairievillagefoundation.com.

For more information on the PV Foundation, see page 9 of this issue of the Village Voice.

Details regarding the virtual Mayor's Holiday Tree festivities will be posted online as soon as they are available. Be sure to check pvkansas.com or the City's social media accounts for those details.

Inside this Issue

- 2 Elected officials
Mayor's message
 - 3 Upcoming events
Solid waste reminders
Volunteer opportunities
 - 4 Comprehensive Plan
Diversity Task Force
 - 5 Backyard hens
Construction noise
 - 6 2021 Budget
 - 9 State of the Arts
Prairie Village Foundation
 - 10 Wind energy
Tree Seminar
 - 11 Curbside compost
 - 12 Property maintenance
- And more!

Elected Officials

MAYOR

Eric Mikkelson
913-385-4600 • mayor@pvkansas.com

WARD I

Chad Herring
913-383-8752 • cherring@pvkansas.com

Jori Nelson
Unlisted • jnelson@pvkansas.com

WARD II

Ron Nelson
913-602-9003 • rnelson@pvkansas.com

Inga Selders
913-648-5804 • iselders@pvkansas.com

WARD III

Bonnie Limbird
913-214-6127 • blimbird@pvkansas.com

Tucker Poling
785-760-0686 • tpoling@pvkansas.com

WARD IV

Sheila Myers
913-645-8093 • smyers@pvkansas.com

Piper Reimer
816-510-8573 • preimer@pvkansas.com

WARD V

Courtney McFadden
913-381-8089 • cmcfadden@pvkansas.com

Dan Runion
913-648-8861 • drunion@pvkansas.com

WARD VI

Terrence Gallagher
913-642-4163 • tgallagher@pvkansas.com

Ian Graves
816-665-9255 • igraves@pvkansas.com

Unsure which ward you live in?
Visit www.pvkansas.com/wardmap.

A Message from the Mayor



Dear friends and neighbors,

Autumn is always about change. This year's annual seasonal changes, including dramatic coloring of our prized tree canopy, are not the only changes underway in Prairie Village. More than most years, profound external forces are driving change in Prairie Village.

The global pandemic, national economic and employment shocks, racial unrest, and elections have tested our civic character. Although we don't know what the future will bring, Prairie Village is a resilient, compassionate and adaptable community.

The future Prairie Village will retain its unique character, excellence and high quality of life. We will remain a desirable, acclaimed, outstanding place to live, work, raise a family, retire, play, learn, and shop.

Yet the future Prairie Village will also be different. Change is inevitable and not always easy. Constructive, transparent civic engagement is key to navigating it successfully. Allow me to highlight here a few improving changes underway in Prairie Village.

Resilience.

Because of our collective efforts this year, the future Prairie Village will be more resilient in the face of adverse external threats. We implemented changes in how we deliver your municipal services to reduce transmission of this virus and the next. We implemented new sustainability programs, policies and priorities to mitigate local risk from a changing climate and other global environmental threats. We invested in our outstanding staff, police, roads and infrastructure to keep you safe while providing a high level of public service and amenities seamlessly, whatever may come.

Local Economy.

Our future economy may never be exactly like that of the past. The retail store vs. online, office vs. remote, event experiences...these may be changed forever. With your help our excellent, eclectic, renowned local businesses will adapt. We are supporting our local businesses through these challenges, including by providing free protective equipment. More importantly, you support them by choosing to shop and dine safely in Prairie Village. While 2020 saw some business closures, we are now seeing openings and new investments in Prairie Village, with more scheduled for 2021. For its part, our City budgeted to remain on extraordinarily solid financial footing, allowing us to absorb 2020's financial shocks, keep tax rates relatively low, and thrive.

Diversity.

An honest, constructive conversation has begun amongst City officials and residents about how Prairie Village can become more welcoming to current and prospective diverse residents. Our Village Vision 2.0 comprehensive long-term plan draft emphasizes retaining our broad spectrum of housing types. We are making Prairie Village more accessible to varying modes of transportation.

As we embrace the growth opportunities that come with such profound changes, please join the conversation. Let us know what you think is worth investing in to preserve here. And let us know what you think is worth investing in to change.

Through those good faith conversations, and hard work, together we'll create a future Prairie Village that remains excellent in every good way that it is today...and becomes better in others.

Stay healthy,

-Eric





November

Small bulky item week: 11/2 – 11/6
 Holiday delay starting Thursday, 11/26

December

Small bulky item week: 12/7 – 12/11
 Holiday Delay starting Friday, 12/25

January

Small bulky item week: 1/4 – 1/8
 Holiday delay starting Friday, 1/1

For information on items allowed for pickup during bulky item week, visit www.pvkansas.com.

Upcoming Events

Date	Event	Time	Location
11/2	City Council Meeting	6 p.m.	TBD
11/3	Election Day	6 a.m. - 7 p.m.	Various
11/4	Planning Commission	7 p.m.	TBD
11/11	Veteran's Day - offices closed	All day	City offices
11/16	City Council Meeting	6 p.m.	TBD
11/26 & 27	Thanksgiving - offices closed	All day	City offices
12/1	Planning Commission	7 p.m.	TBD
12/7	City Council Meeting	6 p.m.	TBD
12/21	City Council Meeting	6 p.m.	TBD
12/25	Christmas - offices closed	All day	City offices

As of October 15, City meetings are still taking place via online video conference due to the COVID-19 pandemic. When in-person meetings resume, they will be in the Council Chambers. For a more comprehensive list of upcoming meetings and events as well as their locations, visit pvkansas.com.



Gingerbread party canceled

Each year, the Prairie Village Foundation looks forward to hosting the annual Gingerbread House Decorating Party to raise money for summer recreation scholarships for qualified Prairie Village families. Given the continued concerns related to COVID-19, the planning committee has made the difficult decision to cancel the event in 2020. We look forward to gathering together again next year to raise money for this worthy cause.

Prairie Village Volunteer opportunities available

The City of Prairie Village is accepting volunteer applications for all City Committees. Interested residents should submit their application at pvkansas.com/volunteer before February 1.

VOLUNTEER FOR A CITY COMMITTEE!
pvkansas.com/volunteer

Comprehensive plan underway

Time remains to submit input

The City is in the process of finalizing the update to our Comprehensive Plan, Village Vision 2.0, and there is still time for residents to provide input.

Village Vision 2.0 provides important policy guidance for the City, the Planning Commission, and our Governing Body to evaluate development proposals, public infrastructure investments, and land use changes over the next 10-20 years. The updated comprehensive plan focuses on five main development principles: strong neighborhoods, sustainability, productivity, quality public spaces, and viable commercial centers. It includes important recommendations on how the City should address a wide variety of community development topics, such as environmental initiatives, workforce housing, and density. The ultimate goal of Village Vision 2.0 is to give the City a roadmap to carefully evaluate development proposals and investment in public spaces to ensure Prairie Village continues to be a resilient place where all people and businesses thrive, and the unique characteristics of the city are sustained.

The City Council will have a number of work sessions this fall to continue to finalize Village Vision 2.0, which is now anticipated to be adopted in early 2021. To view the latest draft and provide input, please visit www.pvkansas.com/villagevision2.0.

Residents can also share their thoughts on the latest draft directly with City Staff, the Mayor and City Council by emailing councilmembers@pvkansas.com.

Please take a moment to share your thoughts with us to ensure that your own village vision is incorporated into the final plan.

Diversity Task Force established

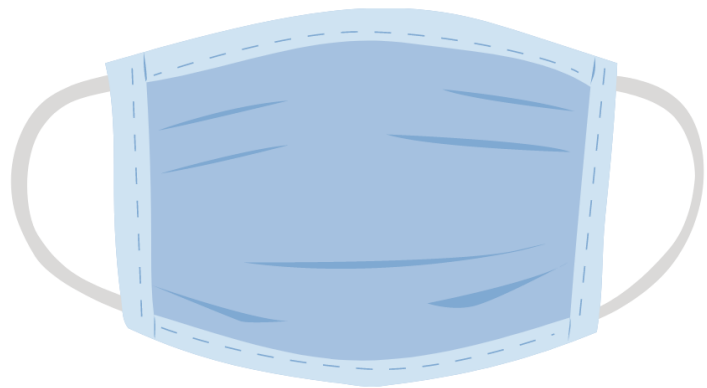
Under the direction of Mayor Eric Mikkelson, the City of Prairie Village has established a diversity task force. The mission of the task force is to develop a set of advisory recommendations for the governing body to attract and retain diverse residents in Prairie Village.

“In addition to racial diversity, that mission includes diversity of religion, sexual orientation, national origin, and more,” Mikkelson said. “Its broad policy scope includes housing and development policy, the arts, sustainability, affordability, events, policing, infrastructure, recruiting and hiring, funding, communication and more.”

The task force’s initial goal is to develop a set of recommended, prioritized action steps and initiatives to make Prairie Village a more diverse and inclusive community. Members of the Prairie Village Diversity Task Force are Prairie Village residents Etienne Clatanoff Orozco, Todd Harris, Dr. Jameelah Lang, Pastor Dennis Solis, Trudy Williams, NAACP representative Michael Shook, police representative Major Byron Roberson, staff lead Deputy City Administrator Jamie Robichaud, Planning Commission Member Melissa Brown, Council Members Tucker Poling and Inga Selders as well as Mikkelson.

The group held its first two meetings via Zoom this fall. Meeting video is available online at pvkansas.com/diversitytaskforce. Future meetings will be announced on the City’s website.

Thank you for helping slow the spread



**PLEASE WEAR
YOUR MASK**



**Masks or cloth face coverings
are required in Prairie Village**

Masks available at City Hall

Face masks or cloth face coverings are required to be worn in Prairie Village. The City of Prairie Village has ordered a supply of single-use masks that are available to local businesses for distribution to customers without masks of their own. The Prairie Village Police Department also has single-use masks available for individual community members in need of them. If your business needs masks, please contact City Hall at 913-381-6464. For details on the governor’s mask mandate visit pvkansas.com/Covid19



Backyard hens allowed in Prairie Village

Effective August 25, 2020, residents can keep backyard chickens in Prairie Village. The City Council spent several meetings this summer discussing chicken keeping, which the municipal code previously prohibited.

The City Council approved Ordinance No. 2421, allowing the keeping of chickens, July 6. The Council took final action on the matter at its meeting August 17 when it approved revisions to zoning regulations.

The approved ordinance states:

- Residents are allowed one clutch of (eight) chicks on any one lot, regardless of the number of dwellings on the lot.
- Residents are allowed six chickens ages 16 weeks or older on any one lot.
- No roosters, only female chickens (hens) are allowed.
- Chickens cannot be kept or sold for profit. Commercial chicken operations are prohibited.
- Chickens must be kept in a coop or chicken tractor at all times.

- Chicken coops and chicken tractors must have at least 12 square feet per chicken and not exceed 84 square feet total.
- Coops, runs and tractors may only be located in the backyard, must be located at least 10 feet from a lot's property line and at least 25 feet from any dwelling, church, school or business structure on any other parcel.
- Chickens cannot be killed on residential lots, consistent with the Kansas animal cruelty statute.

Residents interested in keeping chickens should check with their homes association first. While backyard hens are allowed in Prairie Village, some homes association's deed restrictions prohibit the keeping of livestock or poultry, which would override a City ordinance.

For more information, or to view Ordinance 2421 in its entirety, visit www.pvkansas.com/chickens.



Construction hours reduced

Effective September 16, 2020, the permitted hours of construction in Prairie Village are 8 a.m. to 8 p.m.

The Prairie Village City Council adopted changes to the construction noise ordinance at its meeting September 8. The new regular permitted hours of construction are 8 a.m. to 8 p.m. Monday – Sunday. Between May 15 and September 15 each year, construction can begin at 7 a.m. Monday – Friday except on federal holidays.

These hours apply to all construction on private property whether it is residential construction or commercial construction. The change also applies to property owners doing construction work on their own property as well as contractors.

Violations of the noise ordinance can result in a citation and notice to appear in municipal court. Any resident wishing to report a violation of the noise ordinance must do so when the violation is occurring by contacting the Prairie Village Police Department at 913-642-6868.



Effective August 25, residents can keep backyard hens.

Visit www.pvkansas.com/chickens for information.

2021 BUDGET

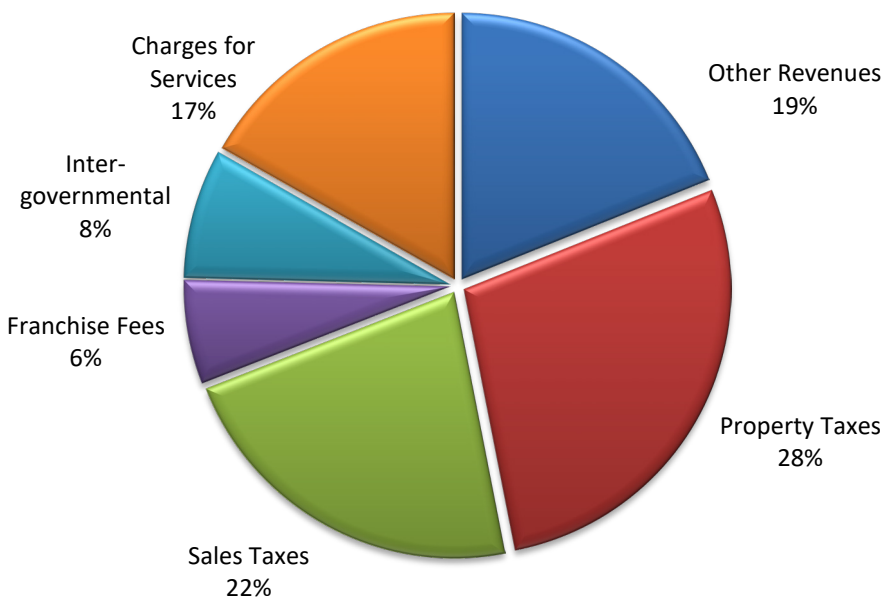
The annual budget serves as a financial plan, provides guidance to City staff, and communicates the City's financial condition. Most importantly, it presents the Governing Body's vision for the community by describing how public funds are spent in order to achieve policy objectives.

The next few pages provide an overview of the City's 2021 Budget and covers the items most relevant to residents. A full version of the budget is located at www.pvkansas.com. Questions regarding the budget can be directed to Lisa Santa Maria, Finance Director at 913-385-4661 or lsantamaria@pvkansas.com.

BUDGET GOALS & OBJECTIVES

- Maintain high quality services and programs
- Maintain quality streets, parks and infrastructure
- Continue strong financial condition
- Maintain Aaa bond rating
- Increase financial transparency
- Increase citizen participation in budget issues
- Be mindful of the tax burden

2021 Revenue Sources - All Funds



Property Tax- Tax on real estate and personal property. It is computed by applying the City's mill rate to the County's assessed valuation

Sales Tax- Tax comes from two sources: Local Sales Tax and County Sales Tax

Franchise Fees- Franchise fees are charged on major utilities within the City. The fee is 5% of gross receipts as defined and permitted by state statutes

Charges for Services- Includes revenue, which is a charge for contract services and special assessments to recipients of certain services

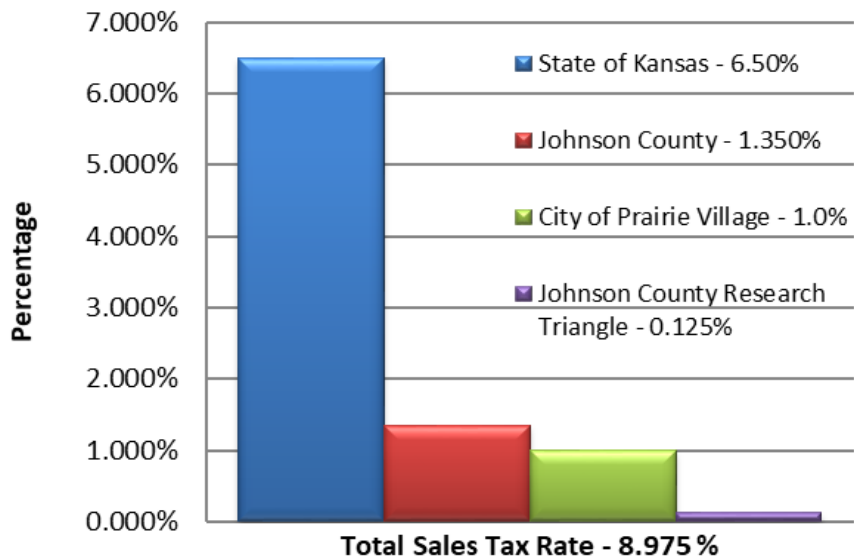
Inter-governmental- Includes revenues provided by other jurisdictions, primarily the State and Federal governments

Other Revenues- Includes use tax, motor vehicle tax, liquor tax, license and permits, recreation fees, fines, interest income and miscellaneous revenue

SALES TAX

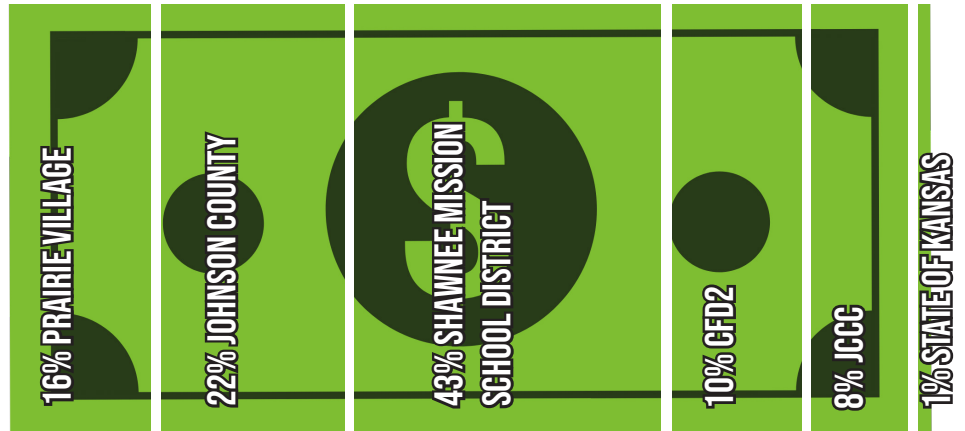
In Prairie Village, sales tax is collected by four entities - the State of Kansas, Johnson County, the City of Prairie Village, and the Johnson County Research Triangle. The total sales tax in Prairie Village is 8.975%. An additional 1% is applied to purchases made at Corinth Square and the Prairie Village Shops due to the Community Improvement Districts (CID) established at those locations. The total sales tax rate at those locations is 9.975%.

Sales Tax Rate by Entity



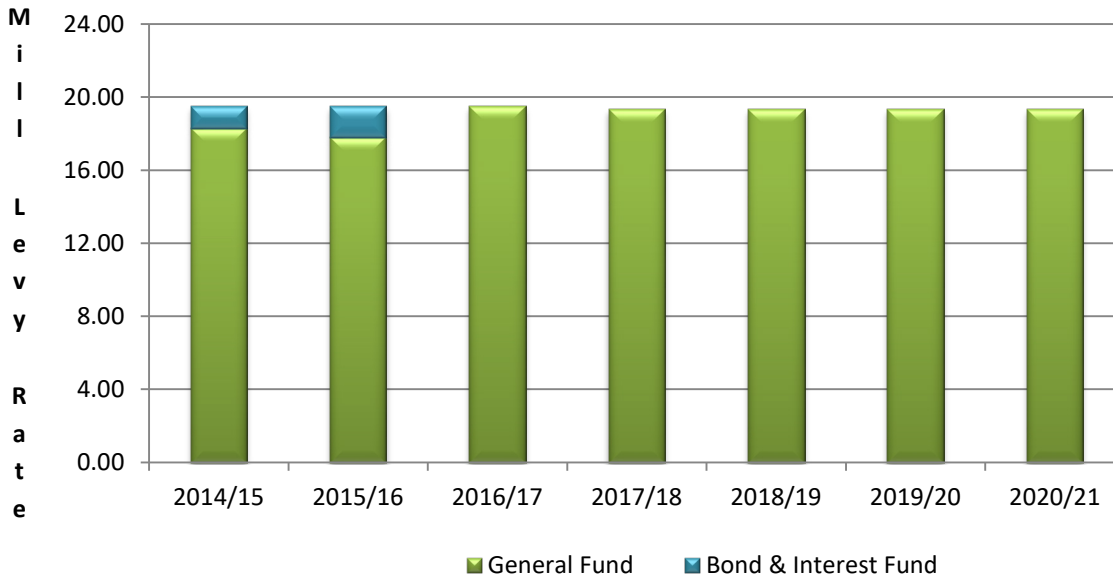
PROPERTY TAX

For Prairie Village residents, the property tax bill is divided among several entities. The City collects 16%. The other taxing entities are: Johnson County, Shawnee Mission School District, Consolidated Fire District #2 (CFD2), Johnson County Community College (JCCC), and the State of Kansas.



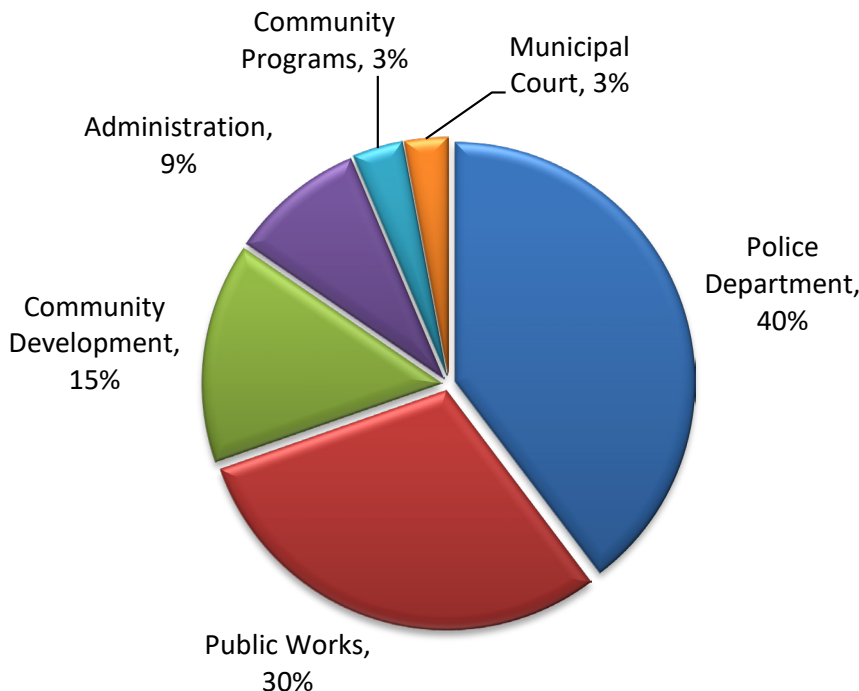
MILL LEVY

Mill Levy Rate 2014 - 2021



The mill levy rate is applied to property's assessed valuation. The 2021 budget did not include a mill levy rate increase. The mill levy rate was last increased in 2012 by 0.6 mills.

2021 Budget by Department



Police- Animal Control, Crime Prevention, Patrol, Investigations, DARE, Emergency Services, and Information Technology

Public Works- Operation and maintenance of drainage system, streets, buildings and grounds, swimming pool, tennis courts, parks, and vehicles

Community Development- Building Permits, Code Enforcement, and Solid Waste Management

Administration- Mayor and Council support, Management and Planning, Financial Management, Human Resources, Business Licensing, and Animal Licensing

Community Programs- Arts Council, VillageFest, JazzFest, swimming pool, aquatic teams, and tennis program

Court- Municipal Judges, Prosecutor Services, and Court Services

MONTHLY PROPERTY TAX BILL

In 2020, the average market value of a Prairie Village home is \$359,987. In 2021, on average, a homeowner will pay \$67 each month for City services. The breakdown below illustrates how this amount is divided among various City programs.

Program	Monthly Cost
Police	\$26.60
Public Works	\$20.07
Community Development	\$9.96
Administration	\$6.10
Community Programs	\$2.28
Municipal Court	\$1.98

Average Homeowner City of Prairie Village	7555
	DATE: May 15, 2021
PAY TO: City of Prairie Village	\$ 67.00
Sixty two and 00/100***** DOLLARS	
Monthly property tax for City services	
MEMO:	TAXPAYER

SPECIAL ASSESSMENTS

Property taxes also include special assessments or fees for trash and recycling services and stormwater system maintenance.

Trash Fee: **\$218/ year or \$18.17/month**
 Stormwater Fee: **\$0.04/sq ft of impervious area**

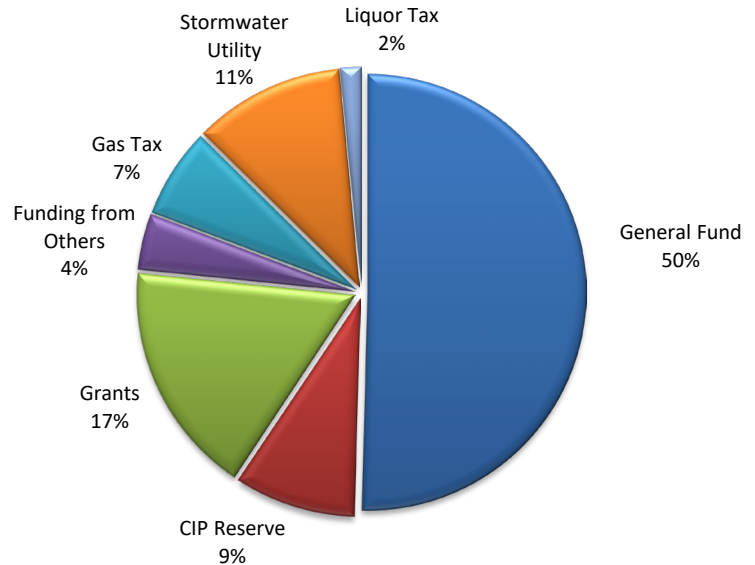
CAPITAL INFRASTRUCTURE PROGRAM

The City maintains a four-year Capital Infrastructure Program (CIP) to aid the City Council and staff in planning and budgeting for the City's infrastructure needs. The CIP is reviewed and updated each year during the budget process. The majority of the funding for the CIP comes from the General Fund. Other funding sources include bond proceeds, the gas tax, the stormwater utility fee, grants, participation by neighboring cities and 1/3 of the liquor tax which is required to be spent on parks and recreation programs.

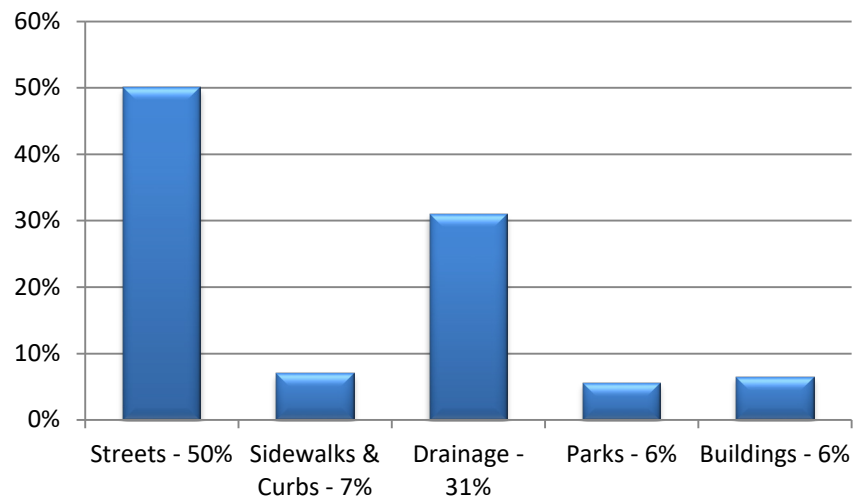
The CIP is divided into five sections:

- Parks-** Includes plans for redevelopment and replacement of existing park structures and materials.
- Drainage-** Includes plans for replacement of components of the City's storm drainage system.
- Streets-** Includes plans for major improvements that extend the life of the City's street system.
- Buildings-** Includes plans for replacement or major improvements that extend the life of the City's buildings.
- Sidewalks & Curbs-** Includes plans for replacement or major improvements that extend the life of the City's sidewalk and curb system. Also includes plans for additions to the system to comply with the City's sidewalk policy or ADA regulations.

2021 CIP Funding Sources



2021 CIP Expenditures



Prairie Village Foundation offers aid to community

Tis the season to give back! Holiday time is a chance to count your blessings and pay it forward to others - a chance to be thankful for what you have and share with someone who may be less fortunate. The Prairie Village Foundation delivers hope to many all year long. That hope is backed by generous monetary support from the community.

The graphic below shows how the Foundation distributed more than \$10,000 in funds in 2019. During this time of giving back, please consider a donation to the Prairie

Village Foundation. Donations can be sent to City Hall, or online donations can be made at www.prairievillagefoundation.com.

Donations made by the end of the year can reach even further thanks to a generous benefactor who has offered to match donations up to \$5,000.

When you make a donation, you know you are making a difference for someone in our community. It will provide a boost when someone needs it the most. Best of all, you will know in your heart you have passed on a very, very special gift this holiday season.



Virtual State of the Arts to be held in November

The Prairie Village Arts Council announced it will host the 15th annual State of the Arts show online this year. \$3,000 in total prize money will be awarded.

The show will be posted on the Arts Council website Friday, November 13th. Voting for the "People's Choice" Award will be open Nov 13-20th. Winners will be announced Monday, November 23rd. We hope all our residents visit our website to vote for their favorite piece of artwork and enjoy the selection of winners at www.artspv.org.

We look forward to hosting our normal SOTA gala awards ceremony next year or once COVID social distancing mandates are lifted, but until then we are pleased to be able to keep up this tradition and have our show online.

Parks host Walk & Read

Franklin Park and Wassmer Park each hosted Johnson County Library's Walk and Read Program earlier this year. Park visitors had the opportunity to read stories as they walked through each park. The books featured at Franklin Park were 'Twinkle, Twinkle Little Star,' by Jane Cabrera and 'Be a Star, Wonder Woman!' by Michael Dahl. The books featured at Wassmer Park were 'Be Who You Are' by Todd Parr and 'The Adventures of Beekle: The Unimaginary Friend' by Dan Santat. Thank you to Johnson County Library for offering this program to Prairie Village Park guests!





Thwarting Porch Pirates

With the holidays upon us and online shopping in its peak season, the Crime Prevention Unit would like to remind residents of ways to prevent being a victim of package theft crimes committed by “Porch Pirates.” Porch Pirates are people who drive residential streets and steal delivered packages from a porch or front door area. Here are some ways to prevent Porch Pirates from stealing your holiday gifts:

- Have your package delivered to a secure location (FedEx office, Amazon pick-up location, etc.);
- Schedule delivery for weekends or after-hours;
- Have packages delivered to your work/office;
- Have a neighbor pick up your delivery;
- Send packages to a family/friend who is home during the day, or
- Install a doorbell camera.

Prairie Village to receive wind energy from Oklahoma

Wind energy will soon help power City offices and facilities in Prairie Village.

The City has signed a multi-year agreement with Evergy to meet electricity needs utilizing renewable wind energy through Evergy’s Renewables Direct program. The City Council has identified sustainability issues as one of its priorities. The Renewables Direct program provides the City a path towards sustainability using abundant, affordable and renewable wind energy from the Midwest. The City enrolled in the program in April 2019 and is scheduled to begin receiving electric energy from a wind farm in Beaver County, Oklahoma by the end of 2020.

Earlier this year, Evergy announced it would expand its wind

energy portfolio by 660 megawatts, and reduce carbon output by 80 percent below 2005 levels by 2050, which is a commitment consistent with the Paris Climate Accord. By the end of 2020, Evergy will have reached an estimated 40 percent reduction in emissions.

Evergy highlighted the key components of a plan to achieve this significant emissions reduction:

- Retiring all coal power plants in the Evergy fleet at the end of their useful life, which is currently estimated to be between 2040-2050, with the exception of Iatan 2 in Missouri;
- Continuing to make significant investments in renewable energy and energy efficiency;
- Operating the Wolf Creek Nuclear Station until its license expires in 2045; and
- Adding a small amount of natural gas generation, if additional carbon-free generation is not available within the plan’s timeframe.



Fall tree seminar available online

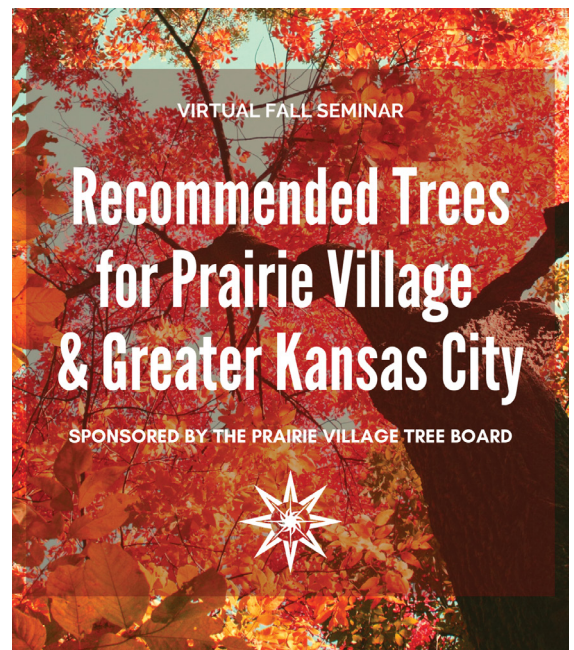
Dennis Patton, local garden writer and the horticulture agent at Johnson County K-State Research and Extension, talked about the challenges of growing trees in the Kansas City area and specific trees he would recommend for this area at the Prairie Village Tree Board’s annual fall seminar. The event was held virtually this year on September 30th.

Patton said our city trees tend to have a shorter lifespan than they would in a forest so it’s important that we continue to plant new trees for the next generation that have a better chance of surviving.

Popular trees like sugar maple, thornless honeylocust, dogwood, and

white oak made Patton’s list, but other common trees like pin oak didn’t make the cut. “Pin oaks can’t handle our high pH soils as well as other oaks,” he said. There were a few surprises on his recommended list including shantung maple and the seven son flower tree, a small tree that flowers in late summer when few other trees are in bloom. He also favored disease-resistant cultivars of an old favorite, the American elm, and noted that they were better able to hold up during storms than lacebark elms.

The presentation was recorded and can be accessed online at pvkansas.com/treeboard.



Reserve a ball field

Ball fields in Prairie Village are always in demand. The City of Prairie Village allows reservations of ball fields for soccer, baseball, and softball practices. Teams with majority of players who are Prairie Village residents or students will be given priority for field reservations, but any team may apply to reserve a field. Teams can reserve two practice times per week for up to 1½

hours. Fields are available in Porter, Franklin, Windsor, and Taliaferro Parks. If your team reserved a field during 2020, your coach should have received a 2021 application form via email. You may also obtain one at the Municipal Offices or online at www.pvkansas.com. Applications for the spring season are due January 15.

Name: **Adam Geffert**
Position: **City Clerk**
Years with the City: **2**



Responsibilities: **City Clerk staff and I are responsible for maintaining all City records, issuing business and animal licenses, and managing reservations at City facilities, among other duties. We also work closely with other departments and provide support for committees and elected officials.**

Favorite thing about working for Prairie Village: **I'm lucky to work in the same city in which my family and I live, and enjoy having a positive impact on the community. It's great working with such a talented and dedicated group of people!**

Discounted rates offered for curbside compost and glass recycling

In an ongoing effort to be good stewards of our environment and be a regional leader on sustainability initiatives, the City has negotiated discounted rates for our residents who would like to sign up for food compost and glass recycling collection.

Residential Curbside Compost

Compost Collective KC is offering a rate of \$21 per month for weekly pickup and \$14 per month for bi-weekly pickup. There is a one-time \$10 sign-up fee. To sign up with Compost Collective KC, visit CompostCollectiveKC.com.

Food Cycle KC is offering a rate of \$17.50 per month for weekly pickup and \$10.50 per month for bi-weekly pickup. There is a one-time \$5 sign-up fee. To sign up with Food Cycle KC, visit FoodCycleKC.com.

Residential Glass Recycling

Food Cycle KC offers curbside glass recycling as an add-on service for their curbside compost program. Residents who sign up for curbside compost through Food Cycle KC can also sign up for glass recycling for an additional

\$3.50 per month.

GlassBandit is offering the first month free to Prairie Village residents who sign up for curbside glass recycling by the end of 2021. After the first month, residents can “name their own price” starting at \$3.00 per month. To sign up with GlassBandit, visit GlassBandit.com/PrairieVillage.

Free glass recycling drop-off is also still available at the Ripple Glass bins at the Village Shops and Corinth Square. To find the closest glass recycling drop-off location near you, visit RippleGlass.com.

Commercial Composting

Composting for local Prairie Village businesses is also available at a discounted rate.

Food Cycle KC is offering a 20% discount for businesses in Prairie Village. To sign up for a free waste audit of your business and get your discounted rate, visit FoodCycleKC.com

KC Can Compost is offering a 10% discount for businesses in Prairie Village. To sign up for a free waste audit of your business and get your discounted rate, visit KCCanCompost.com.

Name: **Bridget Tolle**
Position: **Urban Forestry Specialist/ Maintenance Worker**
Years with the City: **3**



Responsibilities: **I'm involved in trimming, removal, and planting of trees on City property. I'm also responsible for maintaining tree inventory, inspecting City trees by request, and assisting grounds crews. I assist with street and sidewalk snow removal, trash duties, set up and tear down for events, and I'm the City liaison to the Tree Board.**

Favorite thing about working for Prairie Village: **Working outdoors in the beautiful parks and neighborhoods.**

Name: **David Poindexter**
Position: **D.A.R.E. Officer**
Years with the City: **3**



Responsibilities: **During the school year, I teach the D.A.R.E. curriculum to kindergarten through 6th grade students at five of our elementary schools. I also work in patrol, when I'm not in school, and serve the department as a recruiter, hostage negotiator, and CPR and hemorrhage control instructor.**

Favorite thing about working for Prairie Village: **I love working in a highly professional environment, where I experience opportunities to learn and grow every day. I am especially enjoying my current role, where I can engage our young citizens, and help them to develop character that will lead to good choices and successful lives.**

Prairie Village Municipal Office
7700 Mission Road
Prairie Village, KS 66208

Presorted Standard
US Postage
PAID
Permit No. 549
Kansas City, MO

Reader Feedback
Please send your comments to:
info@pvkansas.com
913-385-4674

Proactive Property Maintenance

Help Keep the Village Beautiful



Did you know that the City of Prairie Village addressed 2,281 property maintenance violations in 2019? The City employs two full-time code enforcement officers who monitor the City and work with residents to proactively resolve property maintenance issues. While we work hard to address code violations as quickly as possible, we believe it's a team effort and that we all need to play a role in proactive property maintenance. Here are the most common violations we find throughout the City:

- Trash containers are not screened and are visible from the street
- Tall grass and weeds and overgrown vegetation
- Storing items outside and/or in plain view of surrounding properties
- Exterior maintenance of properties (i.e. chipping paint and crumbling driveways)
- Inoperable and unlicensed vehicles
- Storage of RVs, boats, and trailers
- Trash and refuse on the property

Ensuring Prairie Village continues to be a highly desirable community is one of our top priorities, and that starts with adequate property maintenance. You can help by maintaining your own property and reporting code violations on our website at www.pvkansas.com. Thank you for doing your part in keeping our village beautiful.

City Contact Information

913-381-6464 ■ info@pvkansas.com ■ www.pvkansas.com

CITY HALL AND MUNICIPAL COURT

7700 Mission Road

Wes Jordan, City Administrator
Jamie Robichaud, Deputy City Administrator
Meghan Buum, Assistant City Administrator
Adam Geffert, City Clerk
Lisa Santa Maria, Finance Director

POLICE DEPARTMENT

7710 Mission Road

Tim Schwartzkopf, Chief of Police

PUBLIC WORKS

7720 Mission Road

Keith Bredehoeft, Public Works Director

SOCIAL MEDIA

Are you on social media? Follow the City of Prairie Village and the Police Department for the most up-to-date information on City happenings.



DONATE

If you would like to make a donation to the Prairie Village Foundation, open your smartphone's camera and hover over this QR Code. A page will pop up directing you to the Foundation's website.



EVERYONE MAY PARTICIPATE

If anyone requires an accommodation to participate in public meetings, contact the City Clerk's office at 913-381-6464 (TDD 800-766-2777) at least 48 hours prior to the scheduled meeting time, if possible, to make arrangements.