

# VOICE

The Star of Kansas

## HOLIDAY TREE LIGHTING

Celebrate the start of the holiday season with friends, family, and neighbors at the 34th annual Prairie Village Mayor's Holiday Tree Lighting Ceremony. The tree lighting is sponsored by the Prairie Village Foundation, the City of Prairie Village, and Corinth Square Shops.

This year's ceremony will be held Thursday, November 21 from 6 p.m. to 7 p.m. at Corinth Square. Kickoff the start of the season with Santa Claus, Dancerz Unlimited, Briarwood Elementary choir, and special guests. Hot chocolate and treats will be provided. Corinth Square and Village Shopping Center will hold their Holiday Open Houses throughout the day and evening.

The Mayor's Holiday Tree is lit each year to serve as a reminder of our Prairie Village community members in need. Money raised for the Mayor's Holiday Tree Fund helps qualified Prairie Village residents with utility assistance, home maintenance needs, food assistance, and other vital needs of the community. The City works with Johnson County Human Services and local charities to pinpoint specific necessities. This may mean paying an electric, gas, or water bill when a resident simply cannot, or it could be receiving assistance with a plumbing problem or adding a wheelchair accessible ramp to a home.



Donations can be made to the Prairie Village Foundation, Attn: Mayor's Holiday Tree, 7700 Mission Road, Prairie Village, KS 66208 or online at [www.prairievillagefoundation.com](http://www.prairievillagefoundation.com). Those interested can also bring their donation to the Mayor's Holiday Tree Lighting. Your donation to the Mayor's Tree Fund will help our neighbors spread the holiday spirit every day of the year.

## FEATURES:

5 Prairie Village Budget



9 State of the Arts



11 Gingerbread House



# MAYOR'S MESSAGE



Friends and neighbors,

As the holidays approach, we have much to gratefully celebrate in Prairie Village. We enjoy a uniquely wonderful place to live, learn, work, play, shop and grow.

Reminders of this abound. Whether it's a random act of kindness by a resident, a courageous act of valor by a police officer, a tough problem creatively solved by our staff or public works crew, a new investment in business by a local entrepreneur, or selfless leadership by Council and other volunteers, as Mayor I have the inner vantage point of observing the excellence of this City daily. One aspect of that excellence is our vibrant, healthy local politics.

In contrast to our national politics, our relatively unified and productive local politics consistently stands out as a bright example of how democratic government can and should work.

Despite differences including political affiliation, our Council, staff and residents here in Prairie Village regularly cooperate with civility for the good of Prairie Village. While we engage in spirited debate at the Council, we don't have calcified voting blocks. Most of our decisions are unanimous. When there is a split vote, it is likely to be made up of a different subgroup of Council than the next split vote. Important local issues, such as maintaining roads and infrastructure, public safety and fiscal responsibility don't have D or R positions. But there is more to our success than that.

Another reason our local politics function so well is because we know each other as neighbors. We see each other at the grocery store, church, school, park, VillageFest or Jazz Fest. We share friends and often are friends. That familiarity encourages a touch of humility and compels us to see the other's perspective in a disagreement, rather than quickly demonizing them.

There are often no objectively right or wrong sides to the tough issues facing our City. Mostly we hold similar values. The disagreement, and healthy debate, can come because each of us may give different weight to those respective values. While we act and vote in what we believe to be the best interest of the City, we can legitimately come to different conclusions as to what that best interest is.

And that's OK. Diversity of opinion, background and priorities makes us stronger when handled in an effective political system. Sometimes our transparent, participatory local democracy looks messy in practice and can be slow in results. But our system served Prairie Village well for its first seventy years, and thrives today.

To maintain that healthy strength requires a few things from each of us. These are the same things many of our predecessors contributed to build this great City.

First, consider engaging in local politics (whether by voting, serving, speaking, listening, posting or other) with good faith, seeking truth with the broader public interest in mind. Second, consider granting our neighbors, elected officials and staff the benefit of the doubt to trust that they are also acting in good faith for the long-term public interest. And finally, when we do disagree on issues of importance including elections (and we will), there is almost always a way to advocate effectively yet respect the dignity of the person on the other side.

None of these are always easy. But practiced widely by each of us, they will preserve and enhance the Prairie Village political fabric that favorably distinguishes us. I am inspired to see this happening here every day.

By doing so we are not only ensuring our own high civic quality of life, we are also demonstrating what is possible for America.

Best regards,  
Mayor Eric Mikkelsen

## ELECTED OFFICIALS

### MAYOR

Eric Mikkelsen ..... 913-385-4674  
mayor@pvkansas.com

### WARD I

Chad Herring..... 913-908-7302  
cherring@pvkansas.com

Jori Nelson.....913-522-7497  
jnelson@pvkansas.com

### WARD II

Ron Nelson ..... 913-602-9003  
rnelson@pvkansas.com

Serena Schermoly.....913-777-9597  
sschermoly@pvkansas.com

### WARD III

Tucker Poling ..... 785-760-0686  
tpoling@pvkansas.com

Andrew Wang ..... 913-671-8404  
awang@pvkansas.com

### WARD IV

Brooke Morehead ..... 913-642-4793  
bmorehead@pvkansas.com

Sheila Myers ..... 913-645-8093  
smyers@pvkansas.com

### WARD V

Courtney McFadden..... 913-381-8089  
cmcfadden@pvkansas.com

Dan Runion ..... 913-648-8861  
drunion@pvkansas.com

### WARD VI

Terrence Gallagher ..... 913-642-4163  
tgallagherpv@gmail.com

Ted Odell ..... 913-575-9068  
todell@pvkansas.com

## UPCOMING EVENTS

11/4	Council Meeting	6:00 p.m.	Council Chambers
11/5	Planning Commission	7:00 p.m.	Council Chambers
11/5	Election Day		
11/11	Veterans Day	All Day	City Offices Closed
11/18	Council Meeting	6:00 p.m.	Council Chambers
11/21	Holiday Tree Lighting	6:00 p.m.	Corinth Square
11/28-29	Thanksgiving	All Day	City Offices Closed
12/2	Council Meeting	6:00 p.m.	Council Chambers
12/3	Planning Commission	7:00 p.m.	Council Chambers
12/16	Council Meeting	6:00 p.m.	Council Chambers
12/25	Christmas Day	All Day	City Offices Closed
1/1	New Year's Day	All Day	City Offices Closed

## IN THIS ISSUE:

**Holiday Tree** ..... 1  
**Mayor's Message/Elected Officials** ..... 2  
**PV News**..... 3-4  
**Budget** ..... 5-8

**PV News**..... 9-10  
**Police Department/Public Works**..... 11  
**City Contact Information**..... 12  
**Teen Council** ..... 12

## PV NEWS

### CIVIC CENTER FEASIBILITY STUDY

The City of Prairie Village, the YMCA of Greater Kansas City, and the Johnson County Library are working together on a market sustainability study related to the possibility of building a new civic center in Prairie Village. If built, the facility would function as a community, aquatic, and wellness center operated by the YMCA and a new library branch operated by the Johnson County Library.

Wiese Research Group has been hired to conduct the market sustainability study to gauge the community's thoughts, preferences, and perceived value of constructing such a facility at Harmon Park. Wiese Research Group will be conducting a phone survey of 400 households in the potential service area. An online survey will also be available for those Prairie Village residents who wish to participate. For more information, visit [www.pvkansas.com/civiccenter](http://www.pvkansas.com/civiccenter).

### SKATE PARK UPDATE

Preliminary design work is underway for a new skate park at Harmon park. Over the last several years, Public Works crews have been tracking the deterioration of concrete at the existing skate park. The concrete at the park has significant hairline cracking throughout, likely due to alkali-silica-reaction in the aggregate, which causes the concrete to fail sooner than normal. The City has started the design process to completely remove and rebuild the skate park.

Newline Skate Parks has been hired to design the new skate park. Construction is expected to begin around the first of March 2020 with completion prior to Jazz Fest 2020. A well-attended public meeting was held on September 19 to gather input from the community. Two more public meetings will be held during the planning process. The next meeting date and more information will be posted online at [www.pvkansas.com/pvskatepark](http://www.pvkansas.com/pvskatepark). Give us your input: [www.surveymonkey.com/r/PVskateparkSurvey](http://www.surveymonkey.com/r/PVskateparkSurvey).



### VOLUNTEER FOR A CITY COMMITTEE

The City of Prairie Village is accepting volunteer applications for all City Committees. Interested residents should submit their application at [pvkansas.com/volunteer](http://pvkansas.com/volunteer) before January 1.

### HELP WANTED: CITY TREASURER

The City of Prairie Village is seeking a Treasurer. The position is appointed by the Mayor and typically requires 8-10 hours of work per month. The payment range is \$361-\$453 per month.

The treasurer is responsible for:

- Review of treasurer's quarterly financial statement prepared by Finance Director
- Review of monthly investment accounts summary/reconciliation prepared by Finance Director
- Signing annual beverage license renewals for the City Clerk
- Municipal Court reconciliation
- Reviewing Finance Director's journal entries and reconciliations
- Reviewing all payments and signing off on them, serving as the third signature on physical checks
- Reviewing and approving claims ordinance

If you are interested, please apply online at [www.pvkansas.com/jobs](http://www.pvkansas.com/jobs).

## PV NEWS

### GINGERBREAD HOUSE DECORATING PARTY

The Prairie Village Foundation is excited to host its 11th annual Gingerbread House Decorating Party! Join in the fun and give back to your fellow community members at the same time. Proceeds from the event help finance summer recreation scholarships (pool memberships and swim lessons) for qualified Prairie Village families.

The fun begins when you first walk in and smell the freshly baked gingerbread houses made by Mely Ballard from Mely's Yogurt & Ice Cream. The houses are pre-assembled and ready for your creative decorating touches. A large variety of colorful candy will be available for decorating.

**Event Details:**

- Briarwood Elementary Cafeteria - 5300 W. 86th Street, Prairie Village, KS
- Sunday, December 8, 2019, 1:30 p.m. - 3:00 p.m.
- \$45 per house, maximum 4 people per purchase
- Sign up before December 4

For more details, or to make your reservation online, visit [prairievillagefoundation.com](http://prairievillagefoundation.com). Reservations may also be made in person at City Hall.



### 81ST AND ROE ARTWORK

A new urn was installed at the Corinth Hills island at 81st Street and Roe Avenue this summer. The previous urn had deteriorated to the point rebar handles were exposed. The decision to replace the urn was made by the Prairie Village Statuary Committee and Paul Benson, the artifact expert who advises the committee on the preservation of outdoor statuary and monuments throughout Prairie Village. The Corinth Hills Homes Association Island Committee selected the urn design out of three options presented by the Statuary Committee.



### EVERGY'S RESTORATION PROCESS

*Restoring power is complex. Learn how Evergy brings the community back online after power goes out.*

After an electric outage, power may return in a different order than you'd expect. Evergy has a process in place to address critical needs first followed by the largest number of customers as quickly and safely as possible.

- As outage reports come in, troubleshooters and damage assessment crews are sent to investigate the cause of the outage. This is why you may see an Evergy vehicle visit and leave your neighborhood without power being restored.
- Crews then repair or replace equipment as needed, removing all hazards.
- Many times, tree trimming crews must remove trees or tree limbs before power can be restored.
- Following a major storm, it may be necessary to completely rebuild parts of the electrical system to restore services, which can take a lot of coordination and many hours to complete.

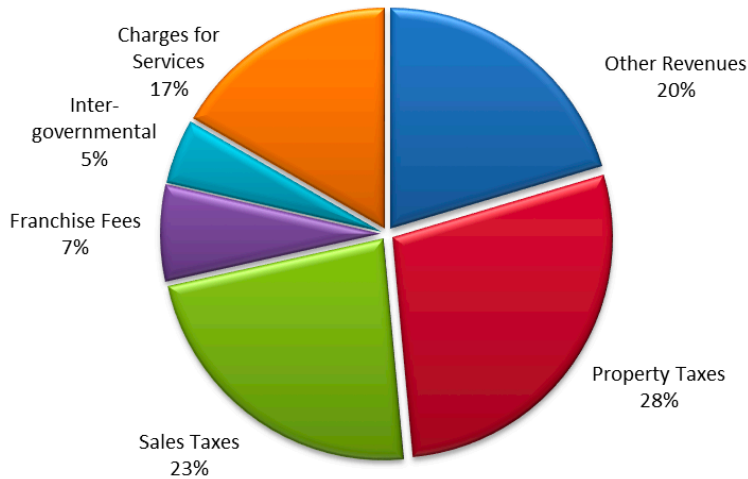
Evergy's goal is to restore power to the largest number of customers as quickly and safely as possible.

# 2020 PRAIRIE VILLAGE BUDGET

The annual budget serves as a financial plan, provides guidance to City staff, and communicates the City’s financial condition. Most importantly, it presents the Governing Body’s vision for the community by describing how public funds are spent in order to achieve policy objectives.

The next few pages provide an overview of the City’s 2020 Budget and covers the items most relevant to the residents. A full version of the budget is located at [www.pvkansas.com](http://www.pvkansas.com). Questions regarding the budget can be directed to Lisa Santa Maria, Finance Director at 913-385-4661 or [lsantamaria@pvkansas.com](mailto:lsantamaria@pvkansas.com).

## 2020 Revenue Sources - All Funds



## 2020 Budget Goals & Objectives

- Maintain high quality services and programs
- Maintain quality streets, parks and infrastructure
- Continue strong financial condition
- Maintain AAA Bond rating
- Increase financial transparency
- Increase citizen participation in budget issues
- Be mindful of the tax burden

### Property Tax

Tax on real estate and personal property. It is computed by applying the City’s mill rate to the County’s assessed valuation.

### Sales Tax

Tax comes from two sources: Local Sales Tax and County Sales Tax.

### Franchise Fees

Franchise fees are charged on major utilities within the City. The fee is 5% of gross receipts as defined and permitted by state statutes.

### Charges for Services

Includes revenue, which is a charge for contract services and special assessments to recipients of certain services.

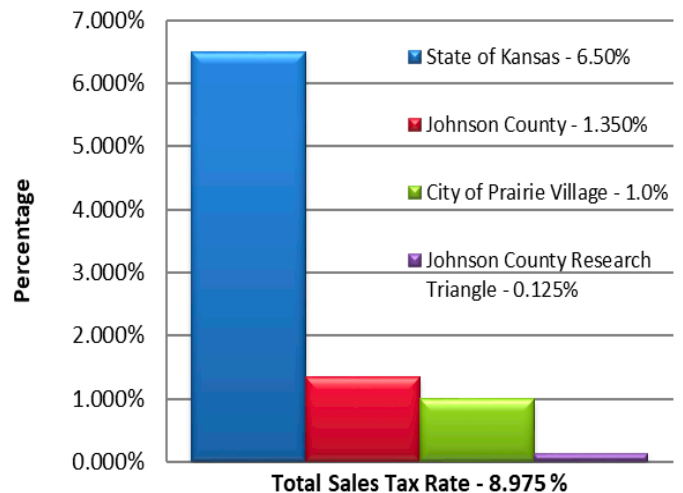
### Intergovernmental

Includes revenues provided by other jurisdictions, primarily the State and Federal governments.

### Other Revenues

Includes use tax, motor vehicle tax, liquor tax, license and permits, recreation fees, fines, interest income and miscellaneous revenue.

## Sales Tax Rate by Entity



(Additional 1% Sales Tax at PV and Corinth Shops)

# 2020 PRAIRIE VILLAGE BUDGET

## HOW ARE YOUR PROPERTY TAXES USED?



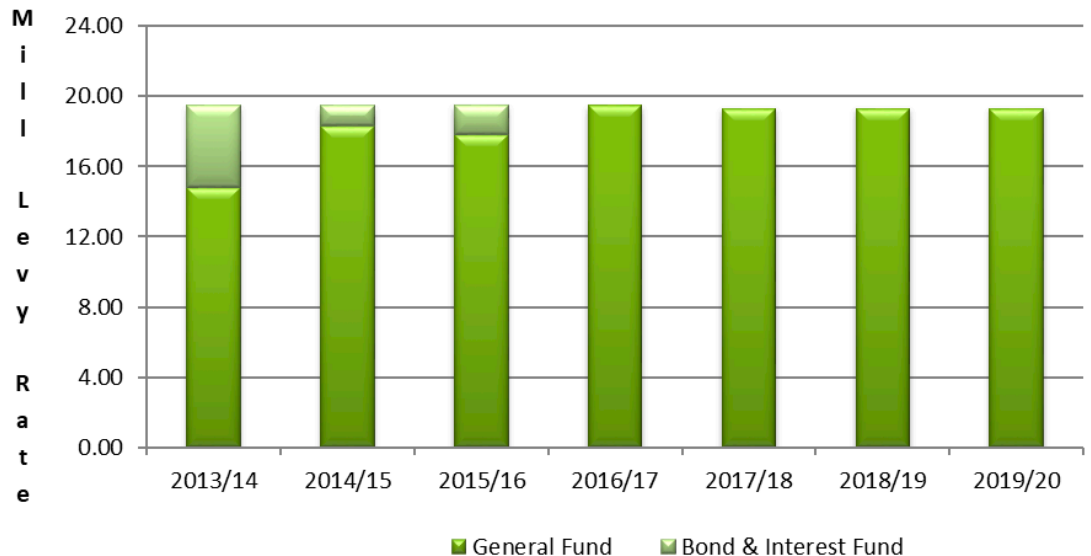
*Your property tax bill is divided between several entities, of which, the City is only 16%*

### How is the mill levy used?

The mill levy rate is applied to the assessed valuation for your property.

The 2020 budget does not include a mill levy rate increase. The mill levy rate was last increased in 2012 by 0.6 mills.

**Mill Levy Rate 2013-2020**



# 2020 PRAIRIE VILLAGE BUDGET

## HOW MUCH OF YOUR PROPERTY TAXES ARE SPENT ON CITY SERVICES?

### Residents Receive City Services

In 2019, the average market value of a Prairie Village Home is \$334,382. In 2020, on average, a homeowner will pay \$62.00 each month for City services. The checkbook below illustrates how this amount is divided among various City programs.

Program	Monthly Cost
Public Safety	\$24.71
Public Works	\$18.58
Community Development	\$ 9.12
Administration	\$ 5.67
Parks & Recreation	\$ 2.11
Municipal Court	\$ 1.81

Average Homeowner City of Prairie Village	7555
DATE: May 15, 2020	
PAY TO: City of Prairie Village	\$ 62.00
Sixty two and 00/100***** DOLLARS	
MEMO Monthly property tax for City services	TAXPAYER

### What services are provided by City Programs?

#### Public Safety

Animal Control, Crime Prevention, Patrol, Investigations, DARE, Emergency Services, and Information Technology

#### Public Works

Operate and maintain the City's drainage system, streets, buildings and grounds, swimming pool, tennis courts, parks, and vehicles

#### Community Development

Building Permits, Code Enforcement, and Solid Waste Management

#### Administration

Mayor and Council support, Management and Planning, Financial Management, Human Resources, Business Licensing, and Animal Licensing

#### Parks & Recreation

Arts Council, VillageFest, JazzFest, Swimming Pool, Aquatic Teams, and Tennis program

#### Court

Municipal Judges, Prosecutor Services, and Court Services

### Special Assessments:

Your property taxes also include special assessments or fees for trash and recycling services and storm water system maintenance.

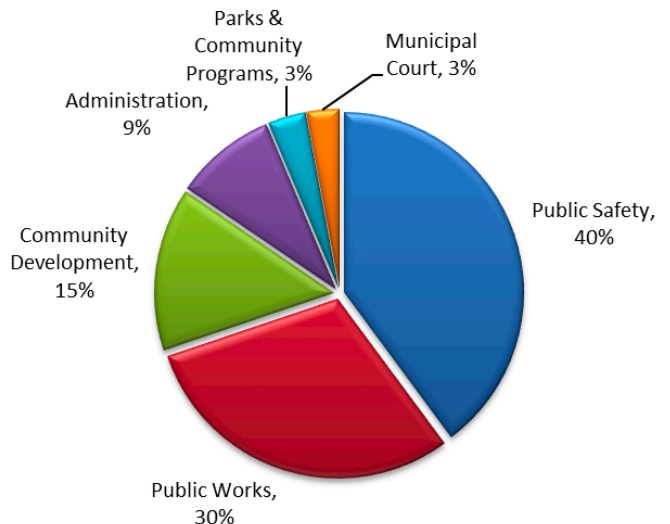
#### Trash Fee:

\$228.00 per year or \$19.00 per month

#### Stormwater Fee:

\$0.04/sq ft of impervious area

### 2020 Budget by Department

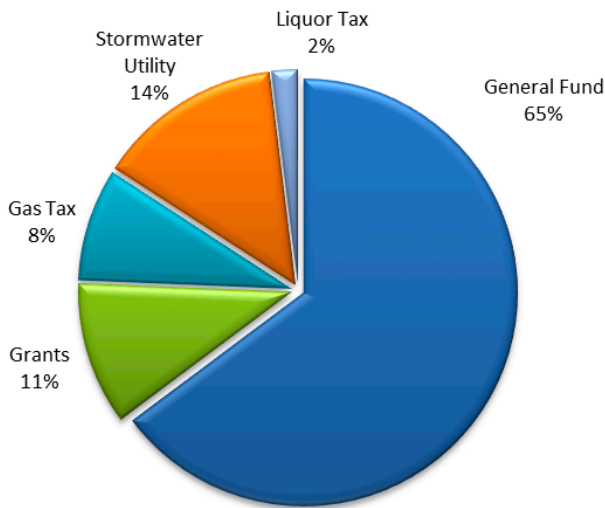


# 2020 PRAIRIE VILLAGE BUDGET

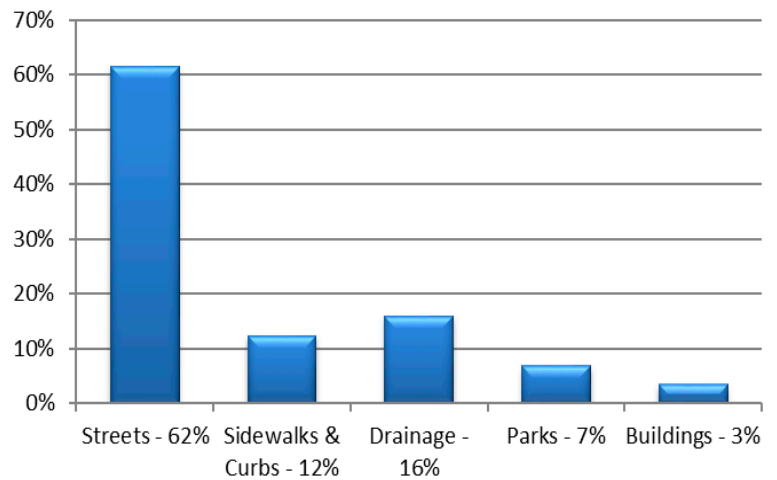
## CAPITAL INFRASTRUCTURE PROGRAM

The City maintains a four-year **Capital Infrastructure Program (CIP)** to aid the City Council and staff in planning and budgeting for the City’s infrastructure needs. The CIP is reviewed and updated each year during the budget process. The majority of the funding for the CIP comes from the General Fund. Other funding sources include bond proceeds, the gas tax, the stormwater utility fee, grants, participation by neighboring cities and 1/3 of the liquor tax which is required to be spent on parks and recreation programs.

**2020 Capital Improvement Program Funding Sources**



**2020 CIP Expenditures**



**The CIP is divided into five sections:**

**Parks**

Includes plans for redevelopment and replacement of existing park structures and materials.

**Drainage**

Includes plans for replacement of components of the City’s storm drainage system.

**Streets**

Includes plans for major improvements that extend the life of the City’s street system.

**Buildings**

Includes plans for replacement or major improvements that extend the life of the City’s buildings.

**Sidewalks & Curbs**

Includes plans for replacement or major improvements that extend the life of the City’s sidewalk and curb system. Also includes plans for additions to the system to comply with the City’s sidewalk policy or ADA regulations.



## PV NEWS

### STATE OF THE ARTS WINNERS

The 2019 State of the Arts Reception was held October 11 at the R.G. Endres Gallery. The exhibition is a juried show featuring two-dimensional and three-dimensional artwork. Congratulations to the following winners:



- Best in Show: Cheryl Acosta — Armada / Mare
- Merit Award: Kristen Reichert – The Light
- Merit Award: Shinhee Chin — People of the South Wind II
- People’s Choice: Netra Bahadur Khattri – Monk’s Arousal
- Honorable Mention: Wendy Taylor — Passing Storm
- Honorable Mention: Katherine Bello — The Back and Forth
- Honorable Mention: Mary Kay Fosnacht — Balancing Act II
- Honorable Mention: Robert Klausing – Irony of the Harvest
- Honorable Mention: Kristen Powers Nowlin — St. Louis, 2017: The Beauty of America

The Prairie Village Arts Council thanks the volunteers, sponsors and artists for participating in this year’s event.



**Best in Show:**  
**Cheryl Acosta —**  
*Armada / Mare*



**Peoples’ Choice:**  
**Netra Bahadur Khattri –**  
*Monk’s Arousal*

### ARTS SHOWS

**November**—Featured artists are Jhulan Mukharji, Jean McGuire, and Paula Leffel. A reception will be held on November 8, 2019 from 6:00 p.m. – 7:00 p.m.

**December**—Featured artists are Elaine (Laney) Haake, Lisa YaDullah, Sylvia Augustus. A reception will be held on December 13, 2019 from 6:00 p.m. – 7:00 p.m.

### CHAMBER MUSIC SERIES

The third concert in the Prairie Village Art Council’s Chamber in the Chamber music series will be November 22. The concert, which will be held in the City Council Chambers at City Hall, 7700 Mission Road, will feature Opus 76. Doors open at 5:30 p.m., and the concert begins at 6 p.m.

### 2019 PRAIRIE VILLAGE JAZZ FESTIVAL

The 10th Annual Prairie Village Jazz Festival brought thousands of people together to enjoy an evening of magical music, delectable food, drink and fun! The event planning committee would like to thank the sponsors and attendees who make the event possible each year. Make plans now to attend the 11th annual Prairie Village Jazz Festival on Saturday, September 12, 2020. If you are interested in serving on the committee or becoming a sponsor, contact Meghan Buum at [mbuum@pvkansas.com](mailto:mbuum@pvkansas.com).



## PV NEWS

### LEAF REMOVAL

The arrival of fall means millions of leaves will be falling from the trees in the City. To Public Works, this kicks off an intense effort to remove leaves from the streets, drain inlets, channels, parks, and islands.



**Streets** - The City has one street sweeper, and it will operate almost every day throughout the fall. The street sweeper's primary purpose is not to remove leaves from the street, and it is important that residents attempt to keep as many leaves out of the street as possible. While we do pick up leaves in locations where there are drainage concerns, we will bypass areas if residents have piled significant amounts of leaves along the curb line. Please note that Public Works does not take sweeping requests.

**Drain Inlets** - Public Works crews make special effort to clear the opening of street drain inlets when heavy rain is projected. Please be advised that city code prohibits the placing of leaves into the drain inlet or into the curb or street.



**Channels** - Public Works crews patrol the channels to remove any blockages. Again, please be advised that city code prohibits the placing of leaves or any debris into the channel.

**Parks and Islands** - The Public Works mowing crews will be removing leaves from all parks and islands on a rotating schedule until weather prohibits these activities. This activity continues in the winter months if there is no snow. With more than 60 acres of parks and more than 200 islands, it can take significant time to complete all these areas.

Leaf removal in Prairie Village is a significant effort for everyone. We appreciate all that residents do to remove leaves from their individual properties. You can contact Public Works by emailing [publicworks@pvkansas.com](mailto:publicworks@pvkansas.com) or calling 913-385-4647.

### WASTE TIRE GRANT PROGRAM

The City of Prairie Village has received grant funds from the Kansas Department of Health and Environment (KDHE) to purchase playground surfacing that will connect sidewalks to ADA transfer stations at Franklin Park and Weltner Park. New play equipment installed at Franklin Park this year includes inclusive play items, and this grant-funded project will provide a loop of connectivity for our residents with special mobility needs at the park.

KDHE's Waste Tire Grant Program supports projects by local governments and schools in Kansas that incorporate waste tires. Eligible projects include those where waste-tire-derived products are incorporated and must be composed of multiple materials no less than 50% waste tire material, unless composed of other recycled material. One of the uses for waste tires in a park setting is poured-in-place surfacing, which allows for a hard surface to access various elements of the play equipment. This surfacing will replace engineered wood fiber at certain locations in the parks, exceeding minimum ADA requirements for play surfacing.

We are excited to receive this grant that funds the project at 50% of eligible costs and to implement hard surfacing, which is a desirable element to inclusivity.

### RESERVE A BALL FIELD FOR YOUR TEAM

Ball fields in Prairie Village are always in demand. The City of Prairie Village allows reservations of ball fields for soccer, baseball, and softball practices. Teams with majority of players who are Prairie Village residents or students will be given priority for field reservations, but any team may apply to reserve a field. Teams can reserve two practice times per week for up to 1½ hours. Fields are available in Porter, Franklin, Windsor, and Taliaferro Parks. If your team reserved a field during 2019, your coach should have received a 2020 application form via email. You may also obtain one at the Municipal Offices or online at [www.pvkansas.com](http://www.pvkansas.com) under Leisure & Lifestyle>>Recreation Programs. Applications for the spring season are due January 17.

# POLICE DEPARTMENT

## REMINDER: LOCK YOUR CAR

The Prairie Village Police Department is asking residents to help prevent auto thefts and auto burglaries. Sometimes prevention can be as simple as locking your car after you exit and making sure your valuables are out of sight. Here are some ways to help decrease your chances of being a victim of an auto burglary:

- Park your car in the garage whenever possible;
- Check your car door lock by pulling up on the door handle to make sure it is secure, especially when using your door lock remote;
- Do not leave items of value in your car. This will decrease the chances of a car burglar wanting to enter your car, and
- Leave a porch light on or park your car under a street light to illuminate your car at night.

By following these simple and easy-to-follow crime prevention steps, you may be able to reduce the chance of your car being stolen or burglarized. In addition, with colder weather approaching, do not leave your car warming up in the driveway unlocked and unattended. Doing so is against city ordinance and can be hard on your car's engine as well as your wallet if your car is stolen.

With questions or comments, contact Detective Caroline Van Cil at 913-385-4012 [cvancil@pvkansas.com](mailto:cvancil@pvkansas.com).

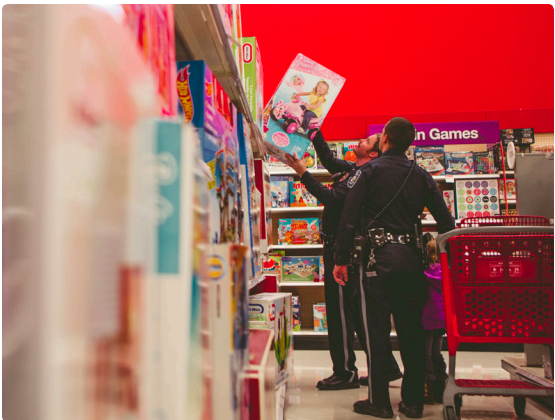
## THWARTING PORCH PIRATES

With the holidays upon us and online shopping in its peak season, the Crime Prevention Unit would like to remind residents of ways to prevent being a victim of package theft crimes committed by "Porch Pirates." Porch Pirates are people who drive residential streets and steal delivered packages from a porch or front door area. Here are some ways to prevent Porch Pirates from stealing your holiday gifts:

- Have your package delivered to a secure location (FedEx office, Amazon pick-up location, etc.);
- Schedule delivery for weekends or after-hours;
- Have packages delivered to your work/office;
- Have a neighbor pick up your delivery;
- Send packages to a family/friend who is home during the day, or
- Install a doorbell camera.



For further information, contact Detective Caroline Van Cil at 913-385-4012 or [cvancil@pvkansas.com](mailto:cvancil@pvkansas.com).



## SHOP WITH A COP

The ninth annual "Shop-With-A-Cop" event will be held in December. Sponsored by the Prairie Village Foundation, "Shop-With-A-Cop" is a chance for the Prairie Village Police Department to team up with deserving elementary school children in our community. Each year, the Police Department hosts ten children identified by school counselors and the Police Department's D.A.R.E. officer. Police officers take the children holiday shopping to purchase gifts for both the child and their family members. After shopping, each child is treated to dinner and has all their packages wrapped free of charge. If you are an area business or resident who would like to contribute to this special program (monetary or specific

gifts for children), please contact Jennifer Wright at 913/385-4607 or [jwright@pvkansas.com](mailto:jwright@pvkansas.com).

Also, don't forget to drop off your old cell phone at the Police Station, 7710 Mission Road. The Police Department is collecting phones to help support the "Shop-With-A-Cop" program. Drop off phones at any time for recycling at the Records or Communications desks in our lobby. Your old cell phone is our treasure!

**Prairie Village Municipal Office**  
7700 Mission Road  
Prairie Village, KS 66208

Presorted Standard  
US Postage  
**PAID**  
Permit No. 549  
Kansas City, MO

### Reader Feedback

Please send your comments to:  
Prairie Village Voice  
7700 Mission Rd  
Prairie Village, KS 66208  
info@pvkansas.com  
913-385-4674

### Prairie Village e-News

Receive Prairie Village e-News in your inbox. Sign-up at [www.pvkansas.com/enews](http://www.pvkansas.com/enews) and tailor your preferences to fit your interests.

 Follow us on Twitter: @PrairieVillage

 Like us on Facebook: [facebook.com/CityofPrairieVillage](https://facebook.com/CityofPrairieVillage)

 Find us on NextDoor

 Follow us on Instagram: [CityofPrairieVillage](https://www.instagram.com/CityofPrairieVillage)

## CITY CONTACT INFORMATION

### CITY HALL & MUNICIPAL COURT

7700 Mission Road  
Wes Jordan, City Administrator  
Jamie Robichaud, Deputy City Administrator  
Meghan Buum, Assistant City Administrator  
Adam Geffert, City Clerk  
Lisa Santa Maria, Finance Director

913-381-6464 \* [info@pvkansas.com](mailto:info@pvkansas.com) \* [www.pvkansas.com](http://www.pvkansas.com)

### POLICE DEPARTMENT

7710 Mission Rd  
Tim Schwartzkopf, Chief of Police

### PUBLIC WORKS

3535 Somerset Dr  
Keith Bredehoeft, Public Works  
Director

### EVERYONE MAY PARTICIPATE

If any individual requires an accommodation to participate in public meetings, contact the City Clerk's office at 913-381-6464 (TDD 1-800-766-2777) at least 48 hours prior to the scheduled meeting time, if possible, to make arrangements.

## CONGRATULATIONS TO THE PRAIRIE VILLAGE TEEN COUNCIL

Prairie Village Teen Council is an opportunity for Prairie Village youth to learn and actively participate in municipal government, positively impact the community, and gain leadership experience. Congratulations to the following students who were selected to serve on the 2019-2020 Teen Council:



- Elizabeth Mikkelson, Shawnee Mission East
- Harper Molen, Rockhurst High School
- Sawyer Shutts, Bishop Miege
- Wenhan Sun, The Barstow School (not pictured)

## SOLID WASTE COLLECTION REMINDERS

### November

Small bulky item week: 11/4 – 11/8  
Holiday delay starting Thursday 11/28 – 11/29

### December

Small bulky item week: 12/2 – 12/6  
Holiday Delay starting Tuesday, 12/25 – 12/28

### January

Small bulky item week: 1/6 – 1/10  
Holiday delay starting Wednesday, 1/1 – 1/4

The Teen Council members will attend City Council and committee meetings, become familiar with the operations of City Hall, Public Works, and the Police Department, and complete a public service project. The students will be mentored by City Council members as they become more involved in our local democratic process.