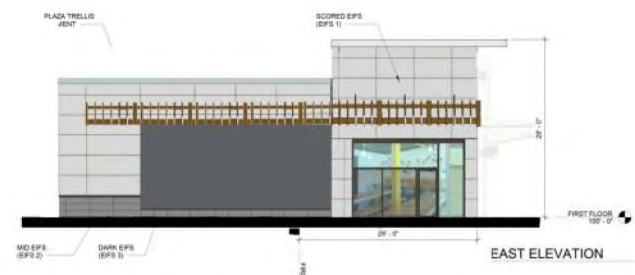
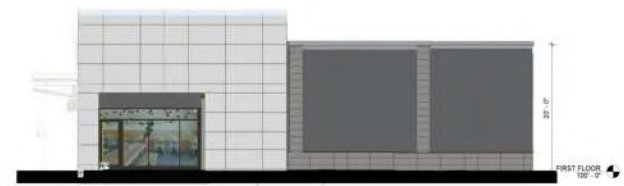




H1 BUILDING B & C - NORTH ELEVATION



EAST ELEVATION



F1 BUILDING B - WEST ELEVATION



C7 BUILDING C - EAST ELEVATION



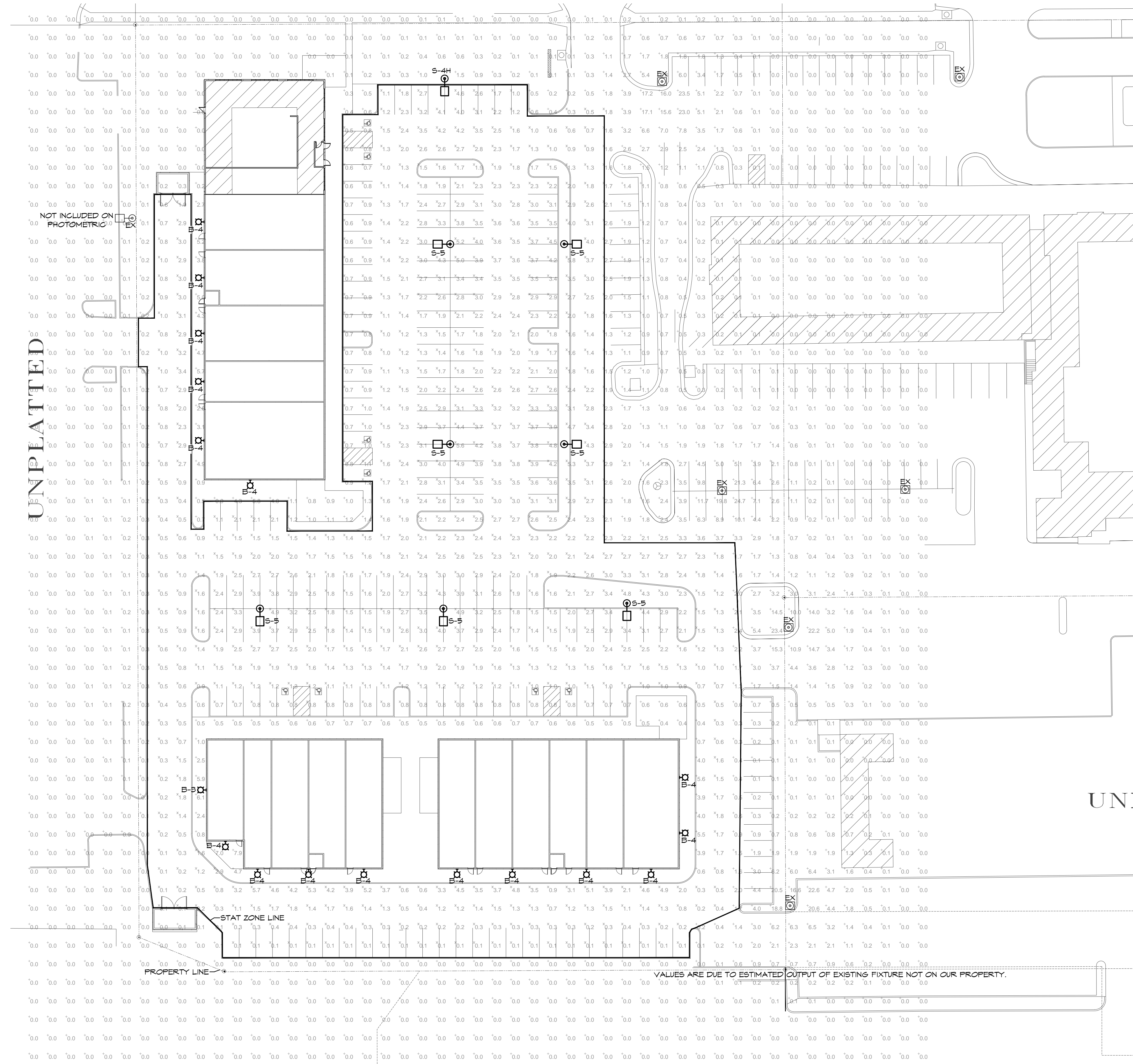
C1 BUILDING C - WEST ELEVATION



H1 BUILDING B & C - SOUTH ELEVATION

- GENERAL NOTES - EXTERIOR ELEVATIONS.
1. SEE SHEET 00-01 FOR ADDITIONAL GENERAL NOTES THAT ARE APPLICABLE.
 2. DIMENSIONS SHOWN ON THE EXTERIOR ELEVATIONS ARE TO THE FACE OF EXTERIOR WALL, FACE OF MASONRY (SOM), FACE OF CONCRETE WALLS, RIGID AND COLUMN GRID LINES, UNLESS OTHERWISE NOTED OR INDICATED.
 3. SEE THE WINDOW TYPES SHEET FOR ALL EXTERIOR WINDOW TYPES AND GLASS TYPES.

- RESIN-BLENDED CONCRETE BLOCK
- WOOD LOOK PANEL
- EPS 1 - SCORED (82% TINT/LIGHT GRAY)
- EPS 2 (82% GRAY SMOKE)
- EPS 3 (84% GRANITE GRAY)
- HEAVY GRANITE SPANGLES
- SILVER FLASHING ACCENT METAL
- STOREFRONT (BLACK)
- TEXTURED PANEL
- WOOD LOOK ELEMENTS (GREEN TRELLIS)



AIRE SCHEDULE

Label	Qty	Manufacturer	Model #	SOURCE/LUMENS/COLOR TEMP	LLF	Watts
EK	6	EXISTING TO REMAN	POST TOP FIXTURE ON 20' ROUND STEEL POLE IV 2' BASE	VERIFY	0.0	VERIFY
S-4H	6	LITHONIA	DSX1-LED-P5-30K-TFTM-MVOLT-RFA-HS-DBLKD ON 20' ROUND TAPERED STEEL POLE IV 2' BASE POLE BASE - 22 TOTAL FIXTURE HEIGHT TO MATCH EXISTING.	LED/19,000 LUMENS/3000K	0.45	130
S-5	7	LITHONIA	DSX1-LED-PR-30K-TSM-MVOLT-RFA-HS-DBLKD ON 20' ROUND TAPERED STEEL POLE IV 2' BASE POLE BASE - 22 TOTAL FIXTURE HEIGHT TO MATCH EXISTING.	LED/28,400 LUMENS/3000K	0.45	241
B-3	1	LITHONIA	DSX1-LED-20C-930-30K-TSM-MVOLT-XXX MOUNTED AT 12'-6" AFF	LED/4,000 LUMENS/3000K	0.45	95
B-4	16	LITHONIA	DSX1-LED-20C-930-30K-TFTM-MVOLT-XXX MOUNTED AT 12'-6" AFF	LED/4,000 LUMENS/3000K	0.45	95

SITE PHOTOMETRIC PLAN
SCALE: 1" = 30'-0"

STATISTICS

Description	Avg
PAVED AREA	1.9

KANSAS PE COA #E-359

The drawing has been prepared by the Engineer or under his supervision. The drawing is provided as an advisory service only. The Designer/Engineer and its associated firms shall not be responsible for the design, construction, or performance of any project. The Designer/Engineer and its associated firms shall not be responsible for the design, construction, or performance of any project. The Designer/Engineer and its associated firms shall not be responsible for the design, construction, or performance of any project.

BC ENGINEERS INCORPORATED
5720 Reeder Shawnee, Ks. 66203 (913)262-1772

REVISION DATE:
