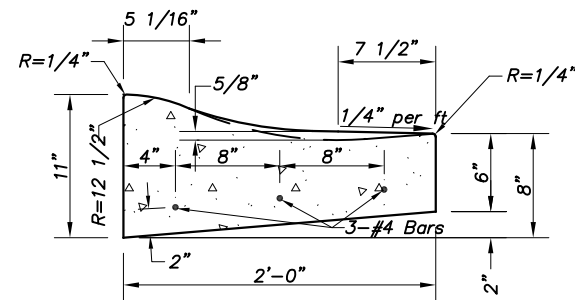
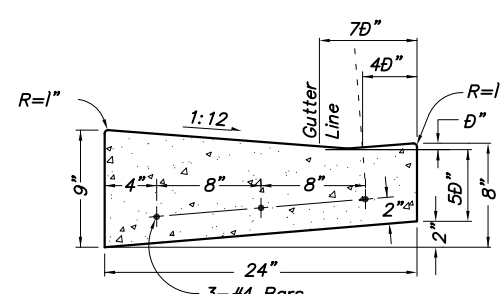


TYPE "A" CURB & GUTTER

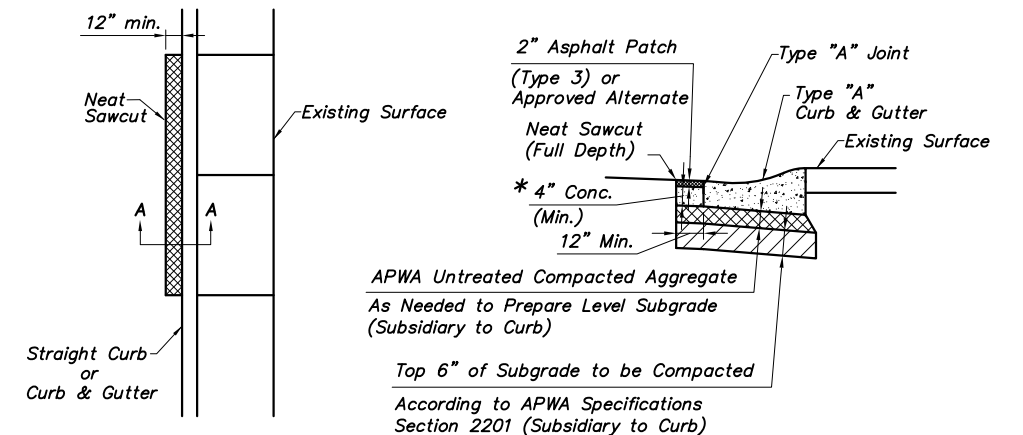


Type "A - Dry" Curb & Gutter

NOTE: in transitions, water shall flow from the gutter of Type "A" curb to the lip of Type "A-Dry" curb at 0.5% min. slope.



TYPE "F" CURB & GUTTER



PLAN VIEW

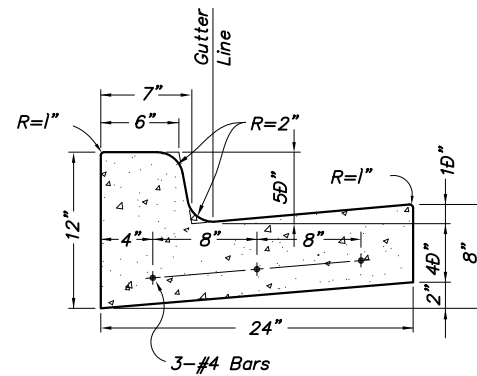
APWA Untreated Compacted Aggregate
As Needed to Prepare Level Subgrade
(Subsidiary to Curb)
Top 6" of Subgrade to be Compacted
According to APWA Specifications
Section 2201 (Subsidiary to Curb)

* Concrete patch shall be a minimum of 4" thick or match the thickness of the adjacent pavement.
SECTION A-A
(Type "A" Curb & Gutter)

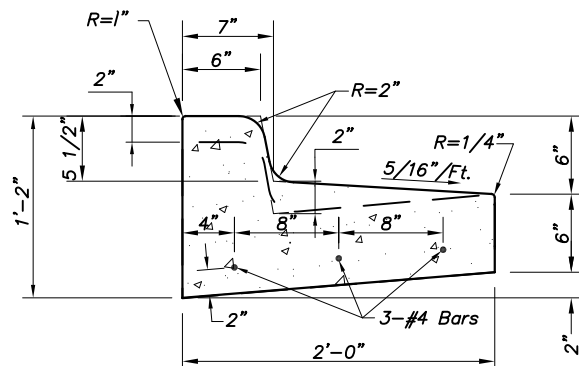
NOTE:

This detail shall not be used for curb replacement adjacent to full depth asphalt patch, concrete pavement or full pavement reconstruction.

CURB REPLACEMENT AT EXISTING ASPHALT

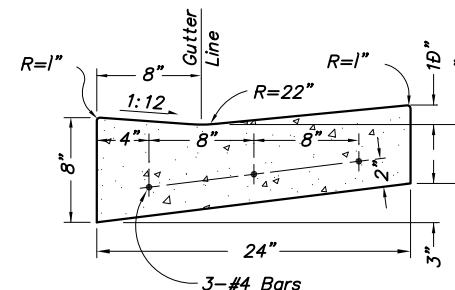


TYPE "B" CURB & GUTTER

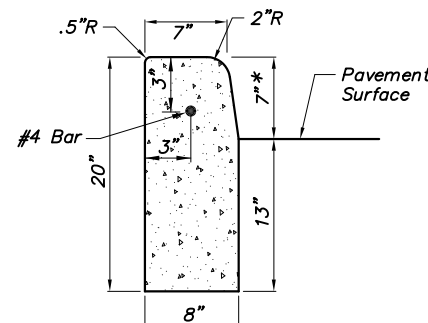


Type "B - Dry" Curb & Gutter

NOTE: in transitions, water shall flow from the gutter of Type "B" curb to the lip of Type "B-Dry" curb at 0.5% min. slope.

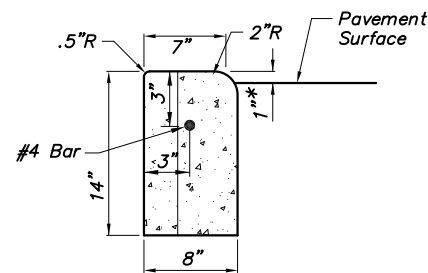


TYPE "C" CURB & GUTTER



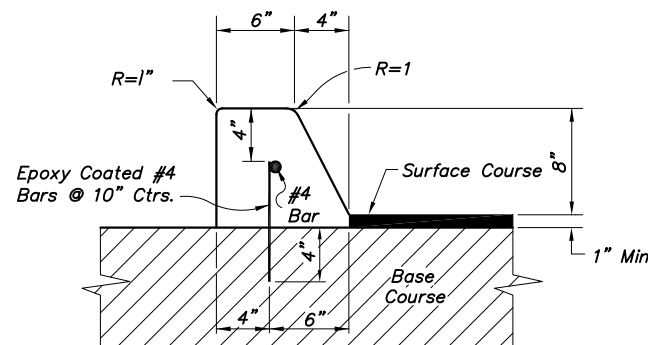
TYPE "E" CURB

* Except where noted otherwise.



TYPE "G" CURB

* Except where noted otherwise.



TYPE "D" CURB

NOTES:

- 1/2" premolded expansion joints shall be placed at points of curvature, curb returns, curb inlets, and at 250' centers. Three 24" Epoxy Coated Smooth #4 Bars at 8" on center shall be used across these joints and supported on fabricated bar supports. The #4 Bar shall be pregreased. Contraction joints shall be 2" deep, and placed at 10' intervals equally spaced between expansion joints.
- Three 24" Epoxy Coated Smooth #4 Bars with 1/2" premolded expansion shall be placed where new curb matches existing curb.
- Steel reinforcing not required when curb and gutter is placed on a minimum 4" thick asphalt base.
- All reinforcing steel shall be supported on fabricated steel bar supports at 3'-0" maximum spacing.
- Type "B" and "C" curb and gutter are related curb and gutter types. Type "C" curb and gutter to be used through sidewalk ramps and commercial driveways (non-declined) on streets with type "B" curb and gutter.
- Type "A" and "F" curb and gutter are related curb and gutter types. Type "F" curb and gutter to be used through sidewalk ramps and residential driveways (non-declined).
- Type "E" and "G" curb are related curb types. Type "G" curb to be used through residential drives.
- All islands shall be constructed with type "B" curb and gutter with a 6' minimum section of type "C" curb and gutter for mower access. See Mower Access Curb Detail.
- All concrete used in this work shall be KCMMB 4K.

DATE	Z:\STANDARD\PV\PV-CURB.DWG	REVISIONS
12/18/03		Revised Type "C" and "F" Curbs
2/06/06		Revised
11/06/08		Added Type "G" curb & Note # 7

**CITY OF PRAIRIE VILLAGE
PUBLIC WORKS DEPARTMENT**

CURB DETAILS

STANDARD DETAIL NUMBER: 103.01