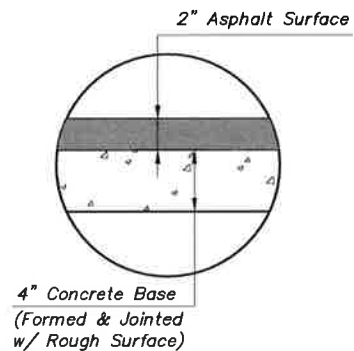
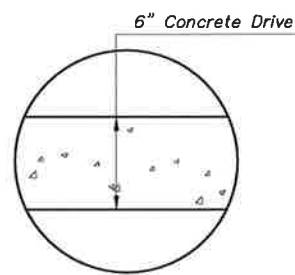


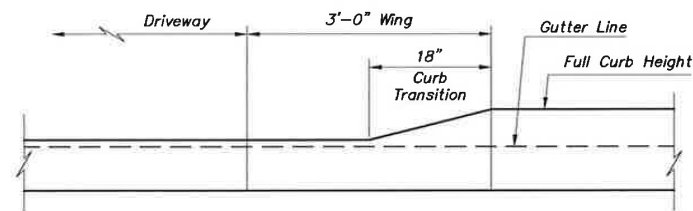
ASPHALT DRIVE W/CONCRETE APPROACH DETAIL



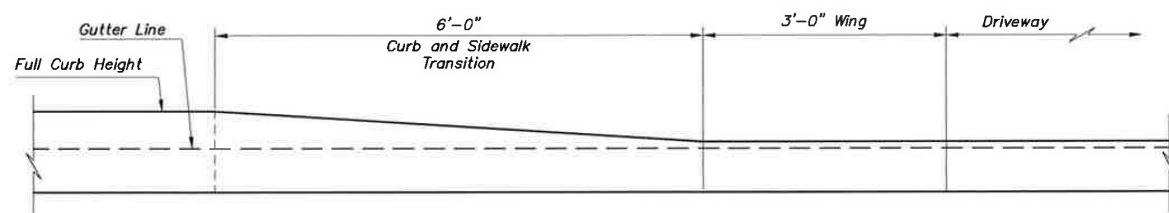
ASPHALT DRIVE DETAIL



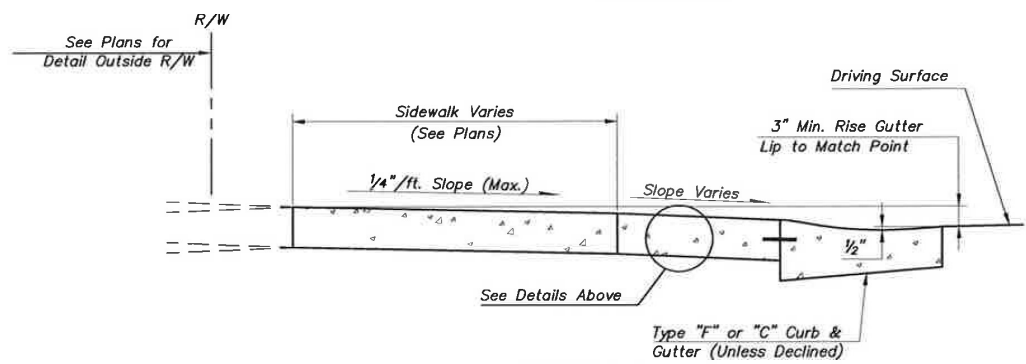
CONCRETE DRIVE DETAIL



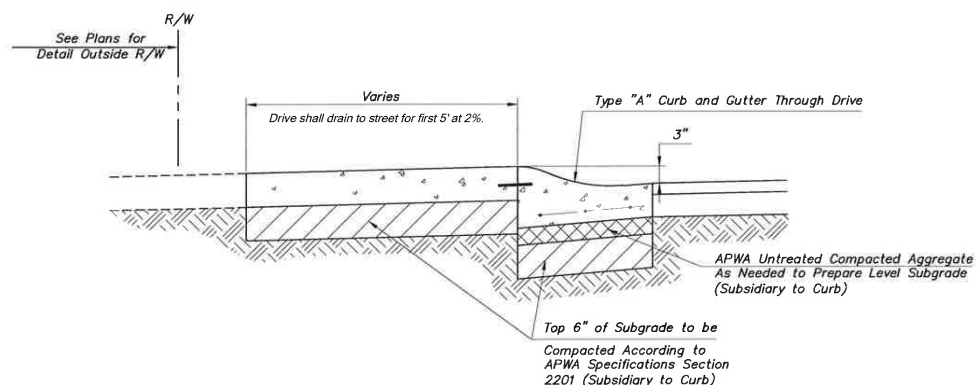
SECTION C-C



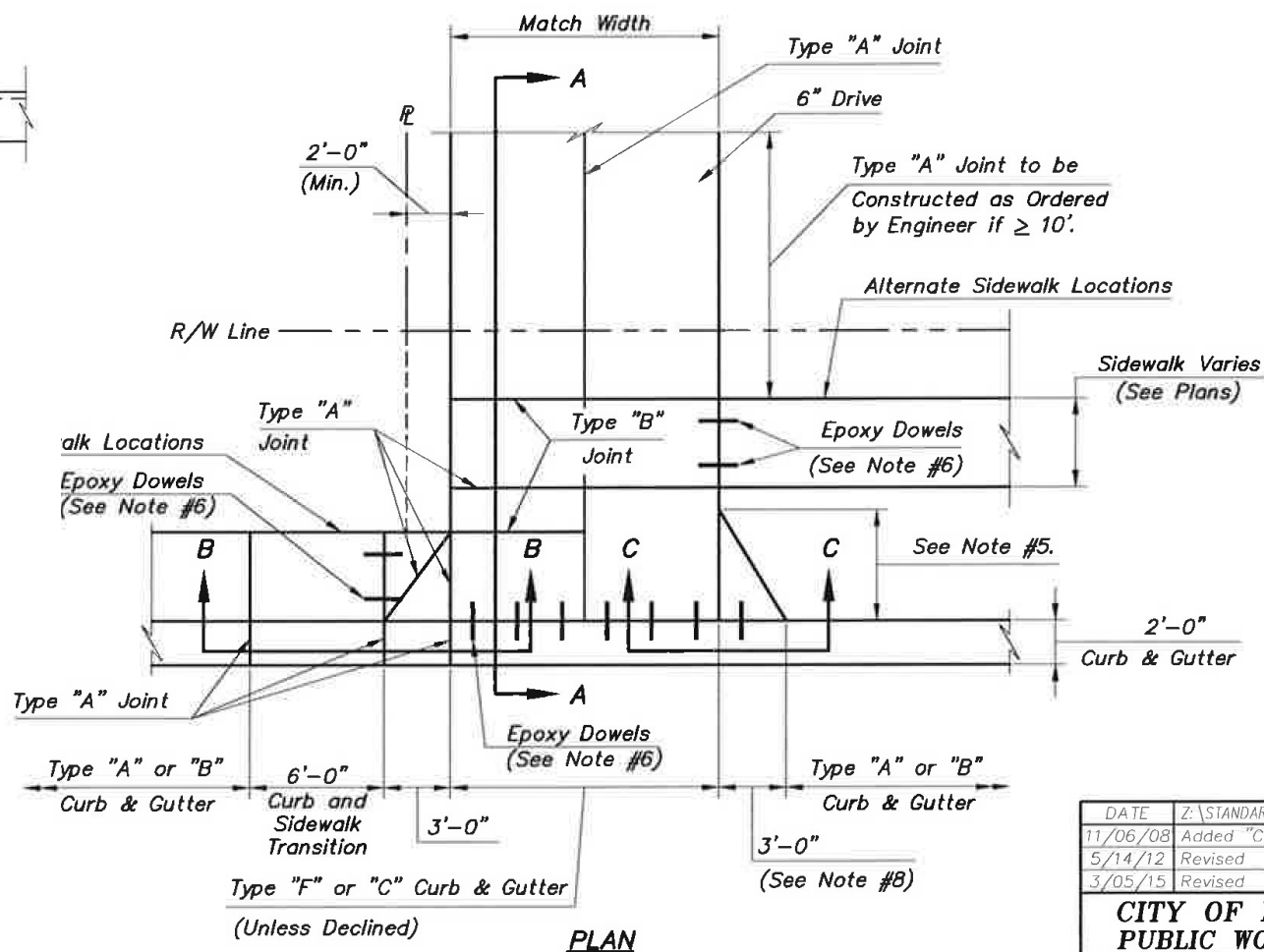
SECTION B-B



SECTION A-A



SECTION VIEW DECLINED DRIVE



PLAN

RESIDENTIAL DRIVEWAY

DRIVEWAY NOTES:

1. Driveways are to be 6" KCMMB 4K concrete. All sidewalk through drives shall be placed 6" deep and paid as 6" driveway. Sidewalks within City right-of-way must be constructed with concrete only. No coloring or stamping is permitted. Driveways within the City right-of-way may be constructed with material other than concrete only if a driveway agreement is obtained from Public Works and signed by all owners of the property.
2. All joints shall be at right angles to the alignment of the curbing and sidewalk unless otherwise noted.
3. The concrete surfaces of curb and gutter, sidewalk and driveways shall be finished with a float and broomed. All flatwork edges shall be finished with a smooth edging tool to give "picture frame" appearance. Sidewalk through a driveway shall be broomed as sidewalk, not driveway.
4. 3 - #4x2' smooth epoxy coated dowels with 1/2" expansion to be placed where new curb matches existing curb.
5. If the offset dimension from the back of curb to sidewalk is less than 5', the width of the wing shall be 3' and the length shall equal the offset dimension. Use type "A" joint as shown. If the offset dimension is greater than or equal to 5', construct driveway with 3'x5' wings with Type "A" joint as shown.
6. Dowels shall be Epoxy coated #4 Bars, 6" Long @ 2' O.C. embedded 3" into curb.
7. See Concrete Joint Details Standard Plan Sheet (107.01) for details of Type "A" and Type "B" joints.
8. Curb Transition - Transition from full curb height to gutter elevation shall take place over 18", unless sidewalk is at back of curb (Section B-B).

DATE	Z:\STANDARD\PV\PV-RESDRV.DWG	REVISIONS
11/06/08	Added "C" Curb & Gutter Call off	
5/14/12	Revised	
3/05/15	Revised	

**CITY OF PRAIRIE VILLAGE
PUBLIC WORKS DEPARTMENT**



RESIDENTIAL DRIVE DETAIL

STANDARD DETAIL NUMBER: 104.01