




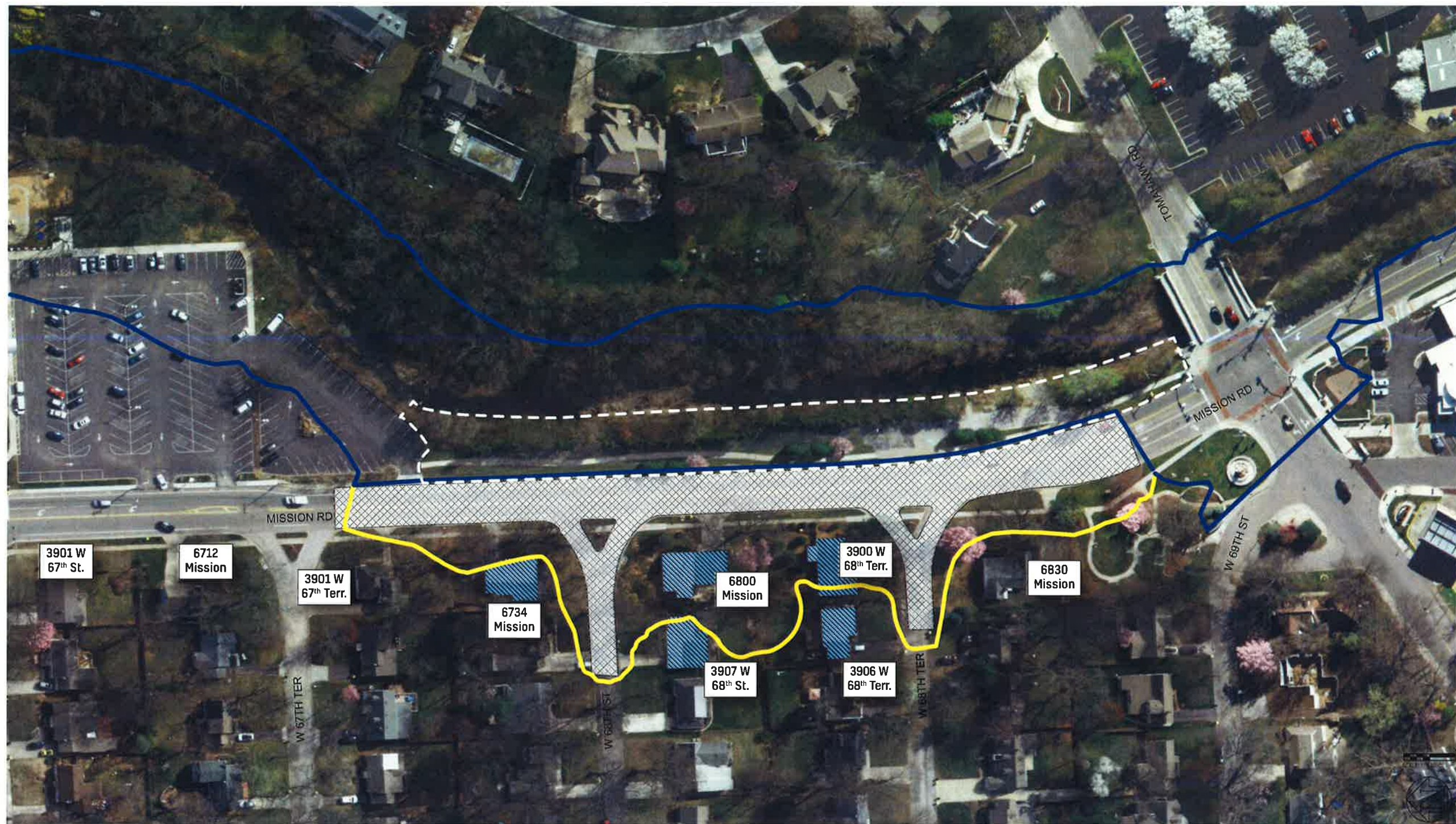


Legend

-  Homes Removed from Flood Zone
-  Proposed New Pavement
-  Improvements to Park Master Plan
-  Flood Hazard Zone (Current)
-  Flood Hazard Zone (after Improvements)



Water Resources Solutions, LLC
 8800 Linden Drive
 Prairie Village, Kansas 66207
 913-902-0330

RAISING MISSION ROAD
 BRUSH CREEK AT 68TH AND MISSION ROAD
 PRAIRIE VILLAGE, KANSAS

REVISIONS:
 1

**PRELIMINARY
 NOT FOR
 CONSTRUCTION**

PROJECT NO.
 2017045
 DATE:
 6-24-18
 SHEET: